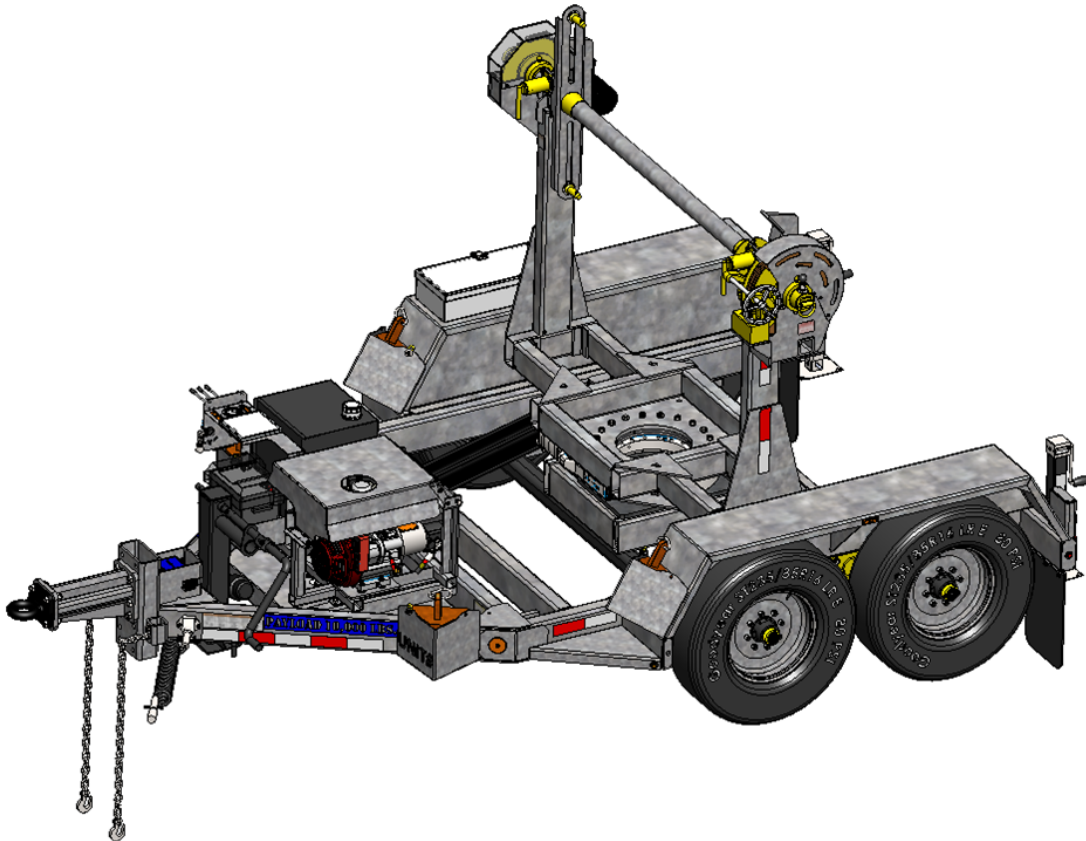


REELSTRONG®

UTILITY FLEET

PLT-SL POWERLOCK™ REEL TRAILER SPECS



EXCLUSIVE STANDARD ADDED VALUE:

- POWERLOCK™ Technology Provides Industry Leading Safety, Ease of Use, Low Maintenance and Durability.
 - Safety and Peace of Mind
 - No Pins, Cotters, or Lanyards that Secure the Reel Arbor (which is the most critical safety point).
 - Faster Reel Loading, Unloading, and Deployment Reduces Labor Costs and Fatigue on Workers.

BUILT FOR SAFETY. BUILT FOR SPEED. BUILT TO LAST.

CAPACITIES

- PLT-SL10: 16,100 lbs. GVWR @ 15% Tongue Weight

AXLES

- PLT-SL10: Tandem 7K lbs. Torsion

WHEELS

- PLT-SL10: (4) 16 x 6K / 8 on 6.5 BC w/ Zeraset

TIRES

- PLT-SL10: (4) ST-235/85R16 LR-E Tires

BRAKES

- PLT-SL10: 12.25" x 2.00" Electric w/ Safety Breakaway Kit

PAYLOAD: ALL FINAL PAYLOADS BASED ON CHOSEN MODEL AND OPTIONS

REEL WEIGHT (PAYLOAD)

- PLT-SL10: 10,000 lbs. Approx.

REEL DIAMETER: 84" Maximum (custom sizes possible)

REEL WIDTH: 60" Maximum

REEL SHAFT DIAMETER: 3.00" OD, 2.00" ID Reel Drive Bar w/ Centering Collars

OVERALL LENGTH: 166.50" Overall Length

OVERALL WIDTH: 101.50"

OVERALL WEIGHT: 4,350 lbs. Approx. (Actual Trailer Weight will Vary with Options & Finishes Chosen)

STANDARD FEATURES

- **PINLESS POWERLOCK™ LIFETIME WARRANTY**

- **VIRTUALLY ZERO MAINTENANCE** Yellow Zinc Electroplated

- **INDUSTRY LEADING 20" OVERSIZED TURRET BEARING w/ HYDRAULIC WORM GEAR**

- **250K Axial, 90K ft/lbs Moment Load**

- **OPEN TOP, "NON ENCAPSULATED" NYLATRON BEARING SADDLE** (low-coefficient of friction). OPEN TOP = LESS FRICTION/LOW

STANDARD FEATURES (cont.)

- MAINTENANCE and EASIER PAY-OUT. (Haven't Replaced a Saddle in 13 Years)
- POWERLOCK™ Technology Provides Industry Leading Safety, Ease of Use, Low Maintenance and Durability.
- Oil Bath Hubs (Greaseable Option All)
- Electric Brakes
- Wheel Chock Holders
- Removable Turrets to Turn Trailer into Flatbed, if Needed.

STANDARD TRAILER BODY

- Heavy Duty 6" X 3" X ¼" Frame
- 6-Position Adjustable Hitch
- ¾" X 36" GR70 Yellow Zinc Safety Chains with Hooks
- 12,000 lbs. Static Front Jack w/ Spring Return
- (2) Two 8,000 lbs. Rear Stabilizer Jacks
- Ground Lug: Copper Alloy Bolted to Frame
- Fenders: ⅛" Plate
- Spring Plunger Accessory Engagement

WIRING

- DOT / ICC Approved LED Lights and Conspicuity Reflective Tape
- FMVSS / CMVSS Standard 108 LED Lighting
- Sealed Beam, Rubber Mounted Stop, Turn, Tail and Marker Lights
- 100% Sealed Heat-Shrunked Wiring Connections w/ Full Loom
- Breakaway Kit with Absorbed Glass Mat (AGM) Battery

PAINT

- Biodegradable Pretreat Acid Cleaning
(Superior to re-used sandblasting material that can impregnate metals with oil)
- Seams Caulked
- Rust Preventative 2-Part Epoxy Primer
- Standard Colors: Red, Black, White and CAT Yellow

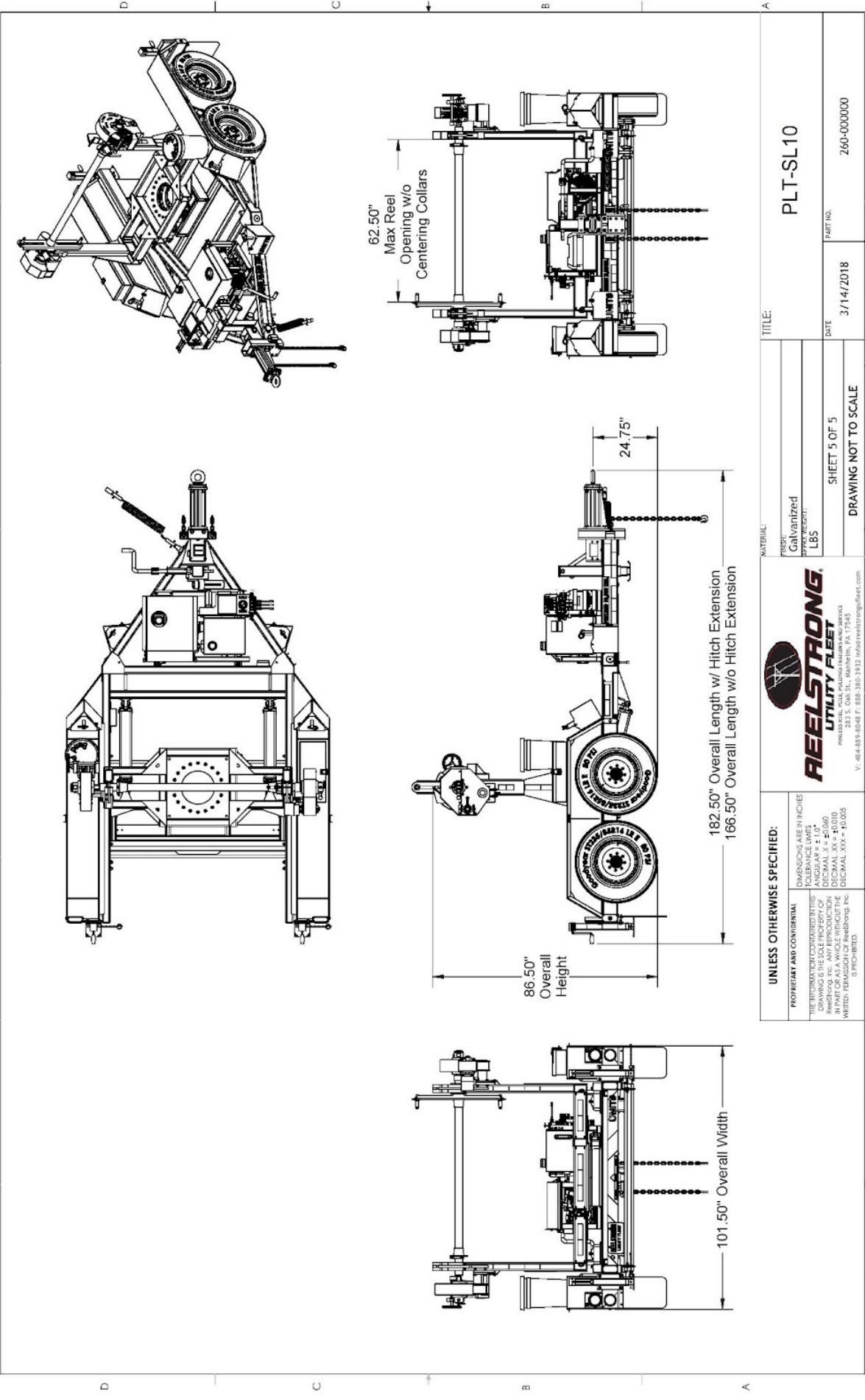
OPTIONS

- 13 HP HONDA Engine Hydraulic Power Pack Comes STANDARD w/ ENGINE COVER, 15 Gallon Reservoir, Replaceable Oil Filter, Pressure Gauge and Solar Fade Resistant Plastic Control Placard. (Electric Start Optional)
- 10-Year Galvanized Structural Warranty (2-Year Painted)
- 3,300 ft/lbs Torque Hydraulic Take-up Retriever. (Motor Spooled w/ Reel Brake ILO Cross-Over Relief Valve for Smooth Instant Reel Stoppage)

OPTIONS (cont.)

- 2-7/16" Universal Adapter for Capstan and Power Reel Attachments
- Hydraulic Hose Rotary Swivel Union (*manages & eliminates loose hydraulic hoses*)
- 7 Inch General Purpose Capstan
- Collapsible Power Reel
- Rotating Arbor Ground
- Rewind Leveler
- 16" Bronze Alloy Ventilated Reel Brake w/ Ventilated Guard
- Aluminum or Steel Toolbox
- Anti-Lock Brakes (ABS)
- 16" Long 6-Bolt Hitch Extension (w/ 52" Safety Chains and Breakaway Cable Extension)
- 3" Lunette Eye
- Wheel Chocks: Rubber or All Weather Galvanized Grip Strut
- Spare Tire and Mount
- Wiring Connections Soldered and Sealed w/ Heat Shrink Tubing
- Plug-and-Play Sealco Wiring Harness
- Solar Charged Breakaway Kit
- 12" Caster Wheel for Tongue Jack
- Strobe Warning Lights
- All Stainless Steel Fasteners (1/2" and under)
- Hydraulic Front Jack
- Truck-Lite Lighting
- Lug Nut Indicators

1 2 3 4 5 6 7 8



UNLESS OTHERWISE SPECIFIED: <small>PROPRIETARY AND CONFIDENTIAL</small> <small>THE INFORMATION CONTAINED HEREIN IS THE SOLE PROPERTY OF REELSTRONG UTILITY FLEET INC. AND IS TO BE USED ONLY FOR THE PART OR AS A WHOLE WITHOUT THE WRITTEN PERMISSION OF Reelstrong, Inc. IS PROHIBITED.</small>		REELSTRONG UTILITY FLEET <small>203 S. Oak St., Warminster, PA 17245 V. 484-889-8048 F. 888-380-3932 info@reelstrongfleet.com</small>	
<small>MATERIAL:</small> FINISH: Galvanized WEIGHT: LBS		<small>TITLE:</small> PLT-SL10	
<small>SHEET 5 OF 5</small>		<small>DATE:</small> 3/14/2018	
<small>DRAWING NOT TO SCALE</small>		<small>PART NO.:</small> 260-000000	