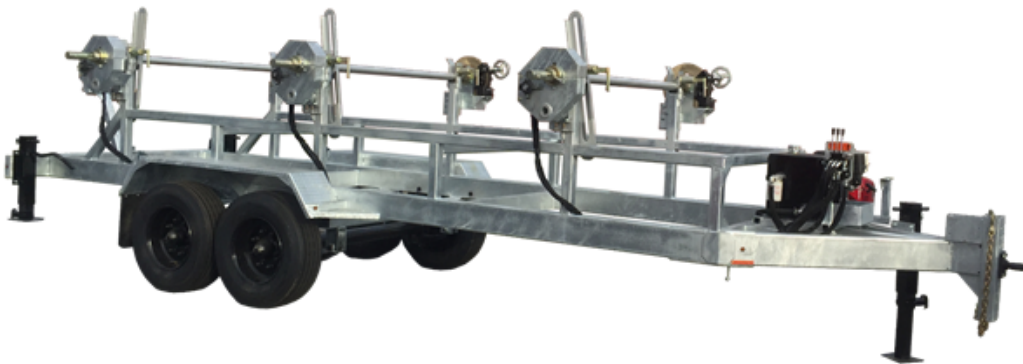
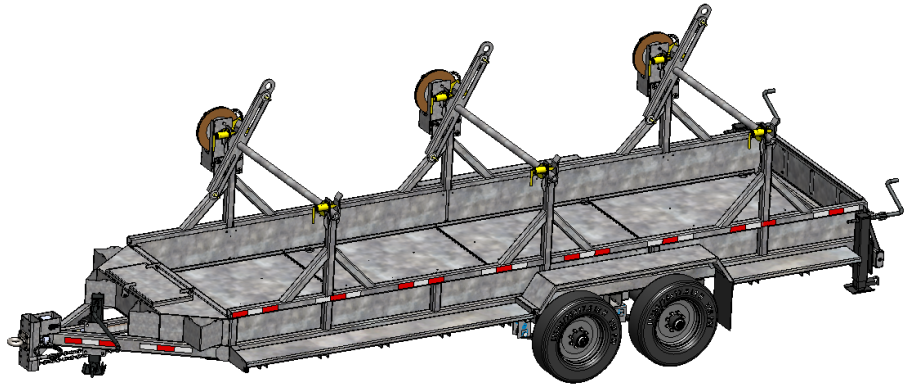


# **REELSTRONG<sup>®</sup>**

## **UTILITY FLEET**

### **MRST3-RC POWERLOCK™ REEL / CARGO TRAILER SPECS**



#### **EXCLUSIVE STANDARD ADDED VALUE:**

- POWERLOCK™ Technology Provides Industry Leading Safety, Ease of Use, Low Maintenance and Durability.
  - SAFETY and Peace of Mind
  - No Pins, Cotters, or Lanyards that Secure the Reel Arbor (which is the most critical safety point).
  - Faster Reel Loading, Unloading, and Deployment Reduces Labor Costs and Fatigue on Workers.

**BUILT FOR SAFETY. BUILT FOR SPEED. BUILT TO LAST.**

## **CAPACITIES**

- MRST3-RC-84-60: 27,600 lbs. GVWR @ 15% Tongue Weight

## **AXLES**

- MRST3-RC-84-60: Tandem 12K lbs. Sprung

## **WHEELS**

- MRST3-RC-84-60: (4) 17.5 x 6.75 HC / 8 on 6.5 BC w/ 0.19 Inset

## **TIRES**

- MRST3-RC-84-60: (4) ST-235/75R17.5 LR-H Tires

## **BRAKES**

- MRST3-RC-84-60: 12.25" x 5.00" Electric w/ Safety Breakaway Kit

## **PAYLOAD: ALL FINAL PAYLOADS BASED ON CHOSEN MODEL AND OPTIONS**

### **REEL / CARGO WEIGHT (PAYLOAD)**

- MRST3-RC-84-60: 20,400 lbs. (6,800 lbs. per Reel)

**REEL DIAMETER:** (3) 84" Maximum

**REEL WIDTH:** 60" Maximum

**REEL SHAFT DIAMETER:** 2.50" Tube w/ Centering Collars

**OVERALL LENGTH:** 320" Approx.

**OVERALL WIDTH:** 102"

**OVERALL WEIGHT:** 7,200 lbs. Approx. (Actual Trailer Weight will Vary with Options & Finishes Chosen)

## **STANDARD FEATURES**

- POWERLOCK™ Technology Provides Industry Leading Safety, Ease of Use, Low Maintenance and Durability.
- Oil Bath Hubs (Greaseable Option All)
- Electric Brakes
- Wheel Chock Holders

## **STANDARD TRAILER BODY**

- Heavy Duty 5" X 3" X ¼"
- 6-Position Adjustable Hitch
- ¾" X 36" GR70 Yellow Zinc Safety Chains with Hooks

## **STANDARD TRAILER BODY (cont.)**

- 12,000 lbs. Static Front Jack w/ Spring Return
- Ground Lug: Copper Alloy Bolted to Frame
- Fenders: 1/8" Tread Plate
- Grip Strut Cat Walks
- Cargo Area: Approx. 66.5" Wide x 244.88" Long x 15" Tall
- Floor: 1/8" Steel Plate
- A-frame: 5' Long

## **WIRING**

- DOT / ICC Approved LED Lights and Conspicuity Reflective Tape
- FMVSS / CMVSS Standard 108 LED Lighting
- Sealed Beam, Rubber Mounted Stop, Turn, Tail and Marker Lights
- 100% Sealed Heat-Shrunked Wiring Connections w/ Full Loom
- Breakaway Kit with Absorbed Glass Mat (AGM) Battery

## **PAINT**

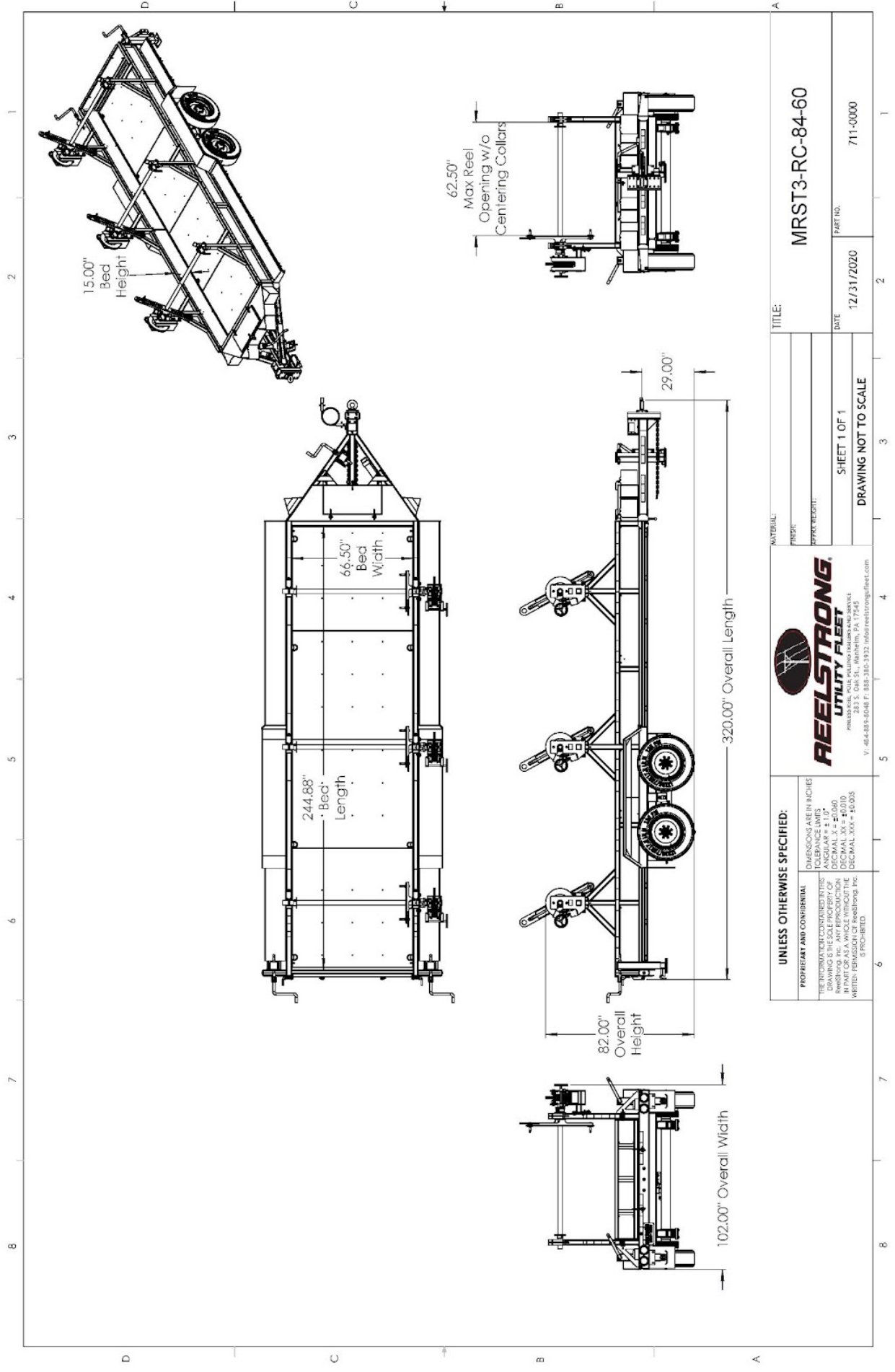
- Biodegradable Pretreat Acid Cleaning  
(Superior to re-used sandblasting material that can impregnate metals with oil)
- Seams Caulked
- Rust Preventative 2-Part Epoxy Primer
- Standard Colors: Red, Black, White and CAT Yellow

## **OPTIONS**

- 13 HP HONDA Engine Hydraulic Power Pack Comes STANDARD w/ ENGINE COVER, 15 Gallon Reservoir, Replaceable Oil Filter, Pressure Gauge and Solar Fade Resistant Plastic Control Placard. (Electric Start Optional)
- 10-Year Galvanized Structural Warranty (2-Year Painted)
- 3,300 or 4,800 ft/lbs Torque Hydraulic Take-up Retriever. (*Motor Spooled w/ Reel Brake ILO Cross-Over Relief Valve for Smooth Instant Reel Stoppage*)
- 2-7/16" Universal Adapter for Capstan and Power Reel Attachments
- 7 Inch General Purpose Capstan
- Collapsible Power Reel
- Rotating Arbor Ground
- Rewind Leveler
- 16" Bronze Alloy Ventilated Reel Brake w/ Ventilated Guard
- 16" Long 6-Bolt Hitch Extension (w/ 52" Safety Chains and Breakaway Cable Extension)
- 3" Lunette Eye
- Aluminum or Steel Toolbox
- 10K-HD / 15K / 20K Axles Available w/ Air Brakes
- Anti-Lock Brakes (ABS)

**OPTIONS (cont.)**

- Wiring Connections Soldered and Sealed w/ Heat Shrink Tubing
- Plug-and-Play Sealco Wiring Harness
- Wheel Chocks: Rubber or All Weather Galvanized Grip Strut
- Spare Tire and Mount
- Solar Charged Breakaway Kit
- Strobe Warning Lights
- All Stainless Steel Fasteners (1/2" and under)
- Hydraulic Front Jack
- Rear Underground Fairlead Roller Attachment (accommodates wooden plank rear gate)
- Truck-Lite Lighting
- Lug Nut Indicators



TITLE: MRST3-RC-84-60	
PART NO.	711-0000
DATE	12/31/2020

MATERIAL:	
FINISH:	
PROCESS/REWORK:	
SHEET 1 OF 1	
DRAWING NOT TO SCALE	

**FEELSTRONG**  
UTILITY FLEET

PHILADELPHIA, PA • POLYMER COATINGS & SERVICE  
V. 464-898-8048 F. 888-390-3932 info@feelstrongfleet.com

**UNLESS OTHERWISE SPECIFIED:**

PROPRIETARY AND CONFIDENTIAL

THE INFORMATION CONTAINED HEREIN IS THE SOLE PROPERTY OF FEELSTRONG, INC. ANY REPRODUCTION OR TRANSMISSION OF THIS DRAWING WITHOUT THE WRITTEN PERMISSION OF FEELSTRONG, INC. IS PROHIBITED.

DIMENSIONS ARE IN INCHES

ANGLE DIMENSIONS: ANGULAR = ± 1.0°

LINEAR DIMENSIONS: DECIMAL .XX = ± 0.010

DECIMAL .XXX = ± 0.005