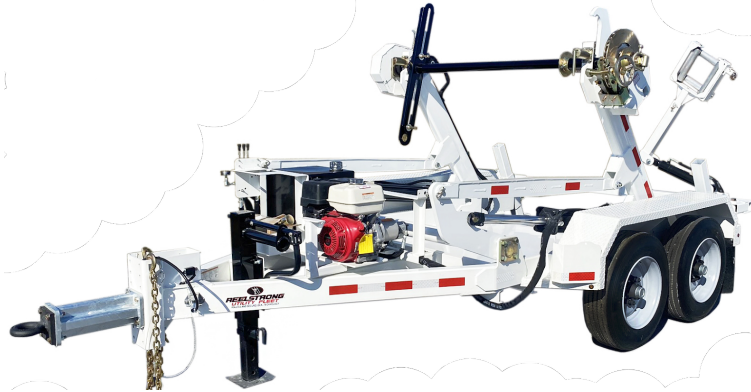


REELSTRONG®

UTILITY FLEET

CLD POWERLOCK™ REEL TRAILER SPECS



LOWEST TOTAL COST OF OWNERSHIP (TCO) From:

- **LIFETIME WARRANTY PINLESS POWERLOCK™** Reel Bar Securement
- No Pins or Cotters to Secure Reel Bar (*most critical safety point*).
- Fastest, Safest Loading, Unloading and Deployment Reduces Labor .
- Yellow Zinc Electro-Plated and Stainless Precision Machined Components
- **PRACTICAL:** No Expensive, Unnecessary Bronze Components, yet we Don't Cut Corners and Provide Premium, Heavy Duty, Top-Quality Latches, Hardware, Fittings and Components.

BUILT FOR SAFETY. BUILT FOR SPEED. BUILT TO LAST.

CAPACITIES

- CLD6: 9,200 lbs. GVWR @ 15% Tongue Weight
- CLD14: 22,100 lbs. GVWR @ 15% Tongue Weight
- CLD20: 27,450 lbs. GVWR @ 14.38% Tongue Weight

AXLES

- CLD6: Single 8K lbs. Torsion
- CLD14: Tandem 10K lbs. Torsion
- CLD20: Triple 8K lbs. Torsion

WHEELS

- CLD6: (2) 17.5 x 6.75 HC / 8 on 6.5 BC w/ 0.19 Inset
- CLD14: (4) 17.5 x 6.75 HC / 8 on 6.5 BC w/ 0.19 Inset
- CLD20: (6) 17.5 x 6.75 HC / 8 on 6.5 BC w/ 0.19 Inset

TIRES

- CLD6: (2) 215/75R17.5 LR-H Tires
- CLD14: (4) 215/75R17.5 LR-H Tires
- CLD20: (6) 215/75R17.5 LR-H Tires

BRAKES

- CLD6: 12.25" x 3.38" Electric w/ Safety Breakaway Kit
- CLD14: 12.25" x 3.38" Electric w/ Safety Breakaway Kit
- CLD20: 12.25" x 3.38" Electric w/ Safety Breakaway Kit

PAYLOAD: ALL FINAL PAYLOADS BASED ON CHOSEN MODEL AND OPTIONS

REEL WEIGHT (PAYLOAD)

- CLD6: 6,000 lbs. Approx.
- CLD14: 14,000 lbs. Approx.
- CLD20: 20,000 lbs. Approx.

REEL DIAMETER:

- CLD6: 96"
- CLD14: 96"
- CLD20: 120"

REEL WIDTH: 60" Max

REEL SHAFT DIAMETER:

- CLD6: 2.50"
- CLD14: 3"

REEL SHAFT DIAMETER (cont.):

- CLD20: 3"

OVERALL LENGTH:

- CLD6: 134.00"
- CLD14: 182.00"
- CLD20: 199.00"

OVERALL WIDTH: 102"**OVERALL WEIGHT:**

- CLD6: 3,050 lbs. Approx.
- CLD14: 5,050 lbs. Approx.
- CLD20: 6,200 lbs. Approx.

Actual Trailer Weight will Vary with Options & Finishes Chosen.

STANDARD FEATURES

- **LIFETIME WARRANTY PINLESS AUTOLOCK™**
- Oil Bath Hubs (Greaseable Option All)
- Electric Brakes
- Wheel Chock Holders
- Dexter Axles
- OPEN TOP, "NON ENCAPSULATED" NYLATRON BEARING SADDLE (low-coefficient of friction). OPEN TOP = LESS FRICTION/LOW MAINTENANCE and EASIER PAY-OUT. (Haven't Replaced a Saddle due to Wear in 13 Years)
- Wheel Chock Holders
- 6D-Rings Front, Center and Rear for Cargo / Transformers (CLD6/CLD14)
- Electric Over Hydraulic (CLD6)

STANDARD TRAILER BODY

- 6" X 3" X ¼" Frame (CLD6/CLD14)
- 8" X 3" X ¼" Frame (CLD20)
- 6-Position Adjustable Hitch
- ¾" X 36" GR70 Yellow Zinc Safety Chains with Hooks
- ½" X 36" GR70 Yellow Zinc Safety Chains with Hooks (CLD20)
- Standard Cargo Area (CLD6/CLD14)
- 8,000 lbs. Static Front Jack (CLD6)
- 12,000 lbs. Static Front Jack w/ Spring Return (CLD14/CLD20)
- Ground Lug: Copper Alloy Star Washer Bolted to Frame (Welded Optional)
- Fenders: ⅛" Fabricated Diamond Plate
- Quick Deploy Outriggers (no loose pins) (CLD20)
- DOT Reflective Conspicuity Tape

LIGHTS/WIRING

- DOT / ICC-- FMVSS / CMVSS Approved LED ULTRA- HIGH VISIBILITY 180 DEGREE BULLET Marker and Clearance Lights
- LED Sealed Beam Rubber Mounted Stop, Turn, Tail and Marker Lights
- 100% Sealed Heat-Shrunked Wiring Connections w/ Full Loom
- Breakaway Kit with Absorbed Glass Mat (AGM) Battery
- FULLY PROTECTED 7 or 6 Way Female Plug acts as Junction Box Recessed in FRAME RAIL. No Easily Damaged Plastic Junction Boxes!

PAINT

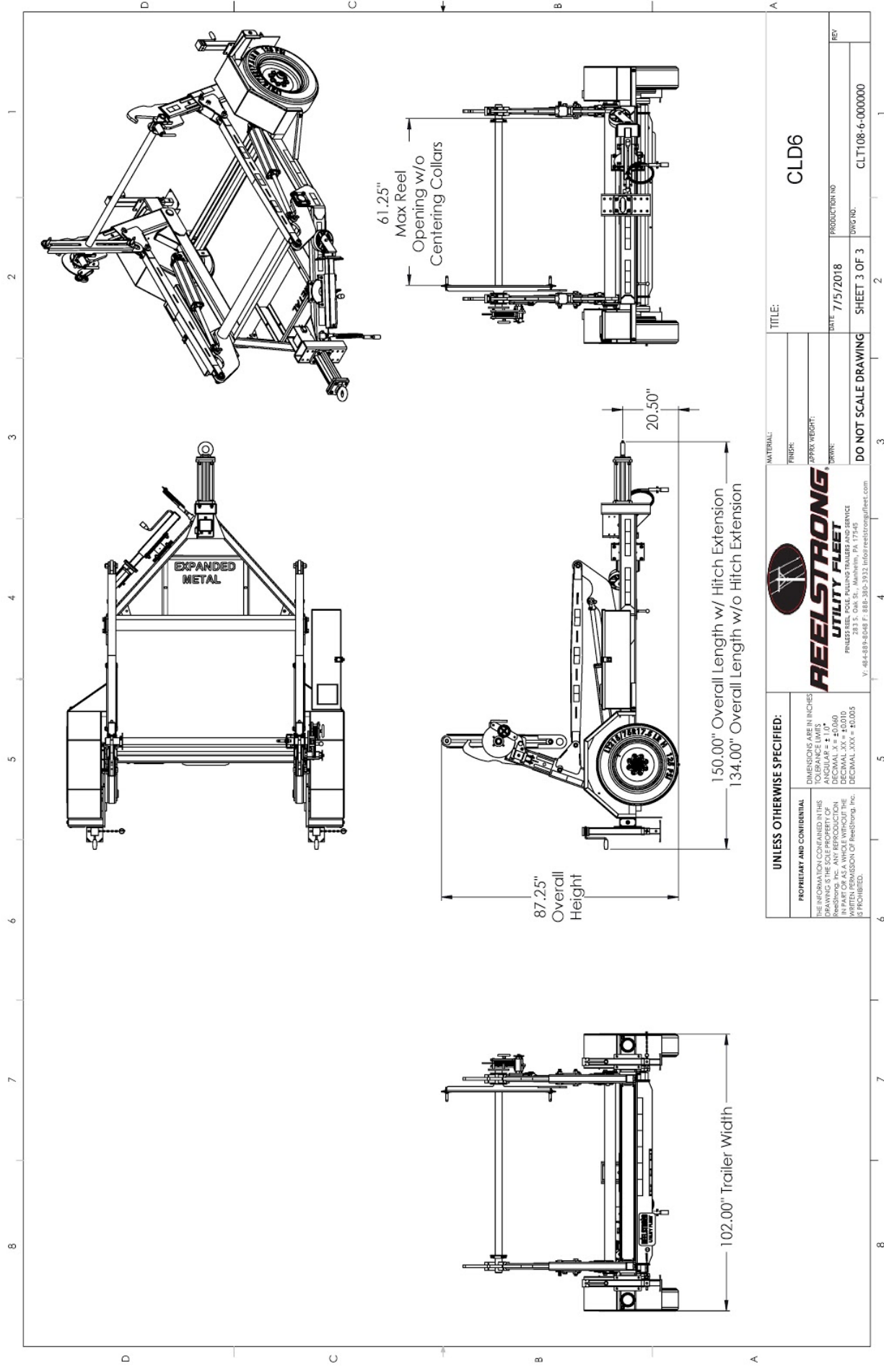
- Biodegradable Pretreat Acid Cleaning
(Superior to re-used sandblasting material that can impregnate metals with oil)
- Seams Caulked
- Rust Preventative 2-Part Epoxy Primer
- Two-Part Polyurethane Topcoats (2 topcoats)
- Standard Colors: White and CAT Yellow (Custom Available)

OPTIONS

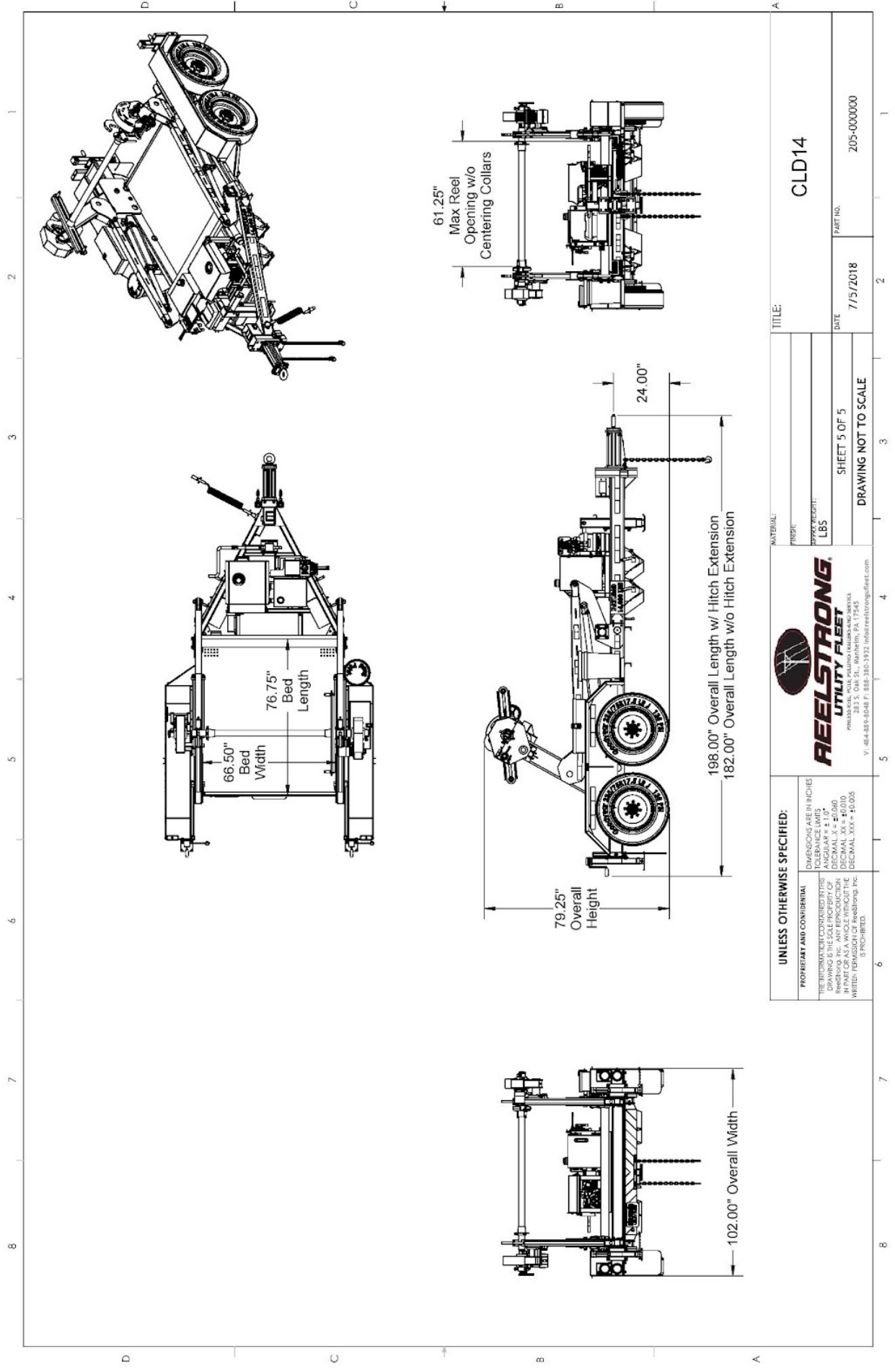
- 13 HP HONDA Engine Hydraulic Power Pack Comes STANDARD w/ ENGINE COVER, 15 Gallon Reservoir, Replaceable Oil Filter, Pressure Gauge and Solar Fade Resistant Plastic Control Placard. (Electric Start Optional)
- Ten (10) Year Galvanized Structural Warranty (2-Year Painted)
- Aluminum Engine Cover
- 16" Bronze Alloy TRU-STOP Ventilated Reel Brake w/ Ventilated Guard
- 3,300 ft/lbs Torque Hydraulic Take-up Retriever. (Motor Spooled w/ Reel Brake ILO Cross-Over Relief Valve for Smooth Instant Reel Stoppage)
- 2-7/16" Universal Adapter for Capstan, Collapsible Reel or Slip-Clutch Fiber-Optic Reels
- 7 Inch General Purpose Capstan
- Collapsible Power Reel
- Slip-Clutch Fiber-Optic Pulling Capstan
- Cable Rewind Leveler
- Rotating Arbor Ground
- Aluminum or Stainless Toolbox
- Air Brakes w/ ABS
- 16" Long 6-Bolt Hitch Extension (w/ 52" Safety Chains and Breakaway Cable Extension)
- 3" Lunette Eye
- Wiring Connections Soldered and Sealed w/ Heat Shrink Tubing
- Plug-and-Play Sealco Wiring Harness
- **Wheel Chocks:** Rubber or All Weather Galvanized Grip Strut
- Spare Tire and Mount
- Solar Charged Breakaway Kit
- 12" Caster Wheel for Tongue Jack

OPTIONS (cont.)

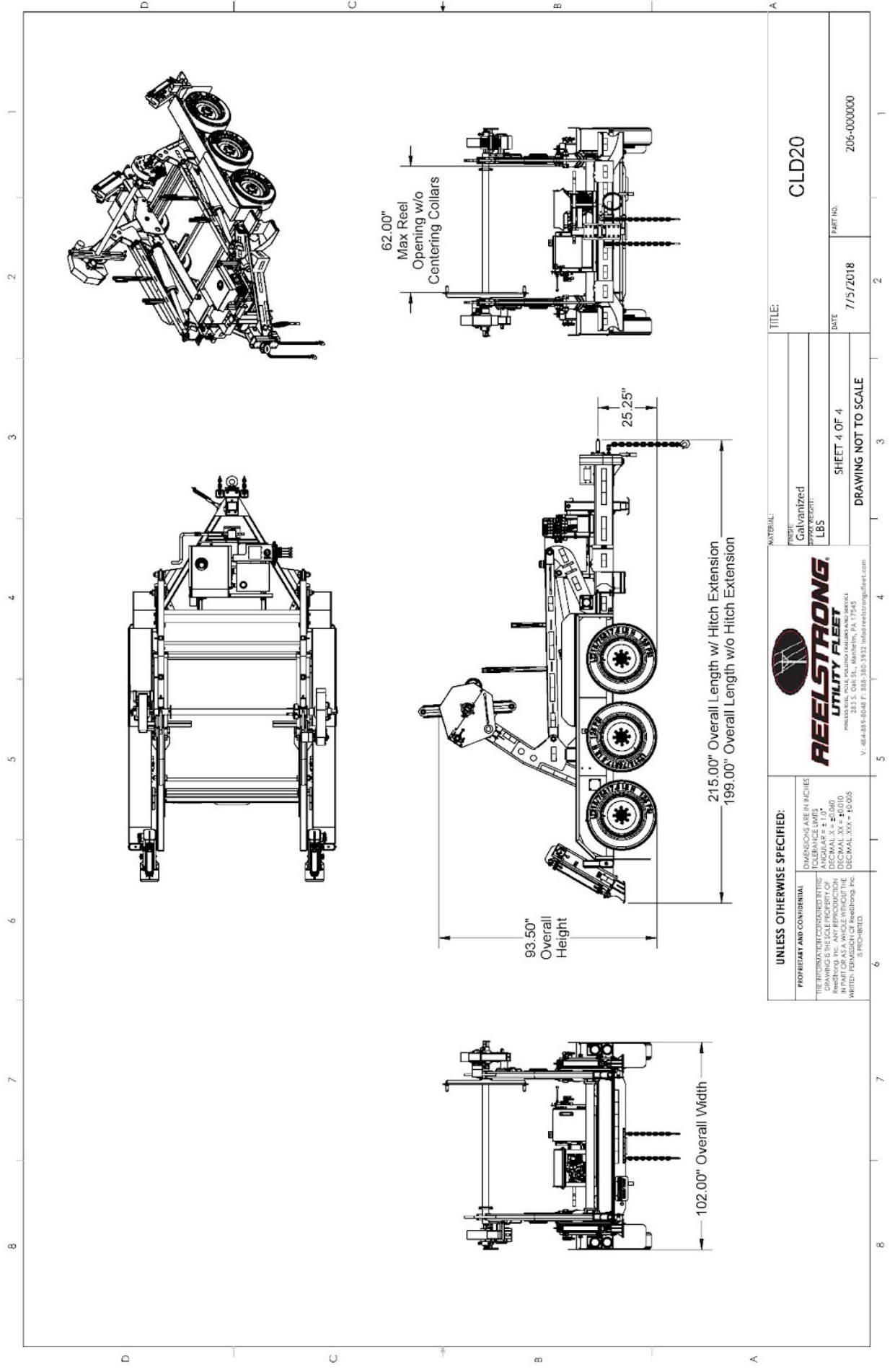
- Strobe Warning Lights
- All Stainless Steel Fasteners (½” and under)
- Auxiliary Hydraulic Quick-Connect Ports
- Various Trailer Light Plugs (Customer Choice)
- Custom Paint
- Custom Specification
- Truck-Lite Lighting
- Lug Nut Indicators



UNLESS OTHERWISE SPECIFIED: PROPRIETARY AND CONFIDENTIAL THE INFORMATION CONTAINED IN THIS DRAWING IS THE SOLE PROPERTY OF REELSTRONG UTILITY FLEET, INC. AND IS TO BE USED ONLY IN PART OR AS A WHOLE WITHOUT THE WRITTEN PERMISSION OF ReelStrong, Inc. IS PROHIBITED.		DIMENSIONS ARE IN INCHES TOLERANCE LIMITS ANGULAR ± 1.0° HOLE POSITION ± 0.010 DECIMAL .XXX ± 0.010 DECIMAL .XXX ± 0.005		REELSTRONG UTILITY FLEET REELSTRONG UTILITY FLEET, INC. 283 S. DALLAS - MATHAMON, PA 17148 V: 484-889-6048 F: 888-380-3932 info@reelstrongfleet.com		MATERIAL: _____ FINISH: _____ APPROX WEIGHT: _____ DRWN: _____ DATE: 7/5/2018 PRODUCT ID NO: _____ DIV/CD: _____ SHEET 3 OF 3 CLT108-6-000000	
---	--	---	--	---	--	---	--



UNLESS OTHERWISE SPECIFIED:		DIMENSIONS ARE IN INCHES	
TOLERANCE LIMITS		ANGULAR ± 1.0°	
DRAWING IS THE SOLE PROPERTY OF		DECIMAL .XX ± 0.010	
REELSTRONG, INC. ANY REPRODUCTION		DECIMAL .XXX ± 0.025	
WITHOUT PERMISSION OF REELSTRONG, INC.		IS PROHIBITED.	
<p>REELSTRONG UTILITY FLEET</p> <p>PHILADELPHIA, PA 19154 V. 484-898-8048 F. 888-390-3932 info@reelstrongfleet.com</p>		<p>TITLE: CLD14</p> <p>PART NO. 205-000000</p> <p>DATE 7/5/2018</p> <p>SHEET 5 OF 5</p> <p>DRAWING NOT TO SCALE</p>	



TITLE: CLD20	
MATERIAL: FINISH: Galvanized	WEIGHT: LBS
DATE: 7/5/2018	PART NO.: 206-000000

SHEET 4 OF 4
DRAWING NOT TO SCALE



UNLESS OTHERWISE SPECIFIED:
DIMENSIONS ARE IN INCHES
TOLERANCE LIMITS:
DRAWING IS THE SOLE PROPERTY OF REELSTRONG UTILITY FLEET
IN PART OR AS A WHOLE WITHOUT THE WRITTEN PERMISSION OF Reelstrong, Inc. IS PROHIBITED.
DECIMAL .XX = ±0.010
DECIMAL .XXX = ±0.005