

REELSTRONG®

UTILITY FLEET

GENERAL DUTY PT LIFETIME WARRANTY MEGA-ROLLER™ w/ SELF-SECURING TONGUE-LOCK™ POLE TRAILER SPECS



LOWEST TOTAL COST OF OWNERSHIP (TCO) FROM:

- **LIFETIME WARRANTY MEGA-ROLLER™** (6 Roller Patent Pending) w/ Bronze Super Alloy Bearings Provides a Smooth “ONE MAN OPERATION” of the Tongue. NO TRUCK NEEDED to Extend or Retract. NO WEAR PADS TO MAINTAIN OR REPLACE. VIRTUALLY ZERO MAINTENANCE
- SELF-SECURING SECURELOCK™ Tongue-lock. No Pins to Lose.
- **PRACTICAL:** No Expensive, Unnecessary Bronze Components, yet we Don't Cut Corners and Provide Premium, Heavy Duty, Top-Quality Latches, Hardware, Fittings and Components.
- Non-Binding/Freezing EZ Slide Pole Centering Stanchions. Replaces Rusted/Seized Lever Lock Stanchions and Expensive Bronze.
- Heavy Duty yet Simple 5” H-Beam Pole Seats

BUILT FOR SAFETY. BUILT FOR SPEED. BUILT TO LAST.

CAPACITIES

- PT10: 11,500 lbs. GVWR @ 15% Tongue Weight

AXLES

- PT10: 10K lbs. Sprung

WHEELS

- PT10: (4) 16 x 6K / 8 on 6.5 BC w/ 5.50 Outset

TIRES

- PT10: (4) ST-235/85R16 LR-E Tires

BRAKES

- PT10: 12.25" x 3.38" Electric w/ Safety Breakaway Kit

PAYLOAD: ALL FINAL PAYLOADS BASED ON CHOSEN MODEL AND OPTIONS

POLE WEIGHT (PAYLOAD)

- PT10: 8,300 lbs. Approx.

OVERALL LENGTH

Retracted / Extended Lengths:

- PT10: 21' / 26' / 31'

Optional Additional / Less Extension Increments Available

OVERALL WIDTH: See Drawings Below

OVERALL WEIGHT:

- PT10: 3,200 lbs. Approx.

Actual Trailer Weight will Vary with Options & Finishes Chosen

POLE SEAT HEIGHT:

- PT10: 37.25"

CARGO BED:

- PT10: 85.50" X 43.75" (Customizable)

STANDARD FEATURES

- **LIFETIME WARRANTY MEGA-ROLLER™ SIX ROLLER SYSTEM**

Oversized Precision Rollers w/ Bronze Alloy Bearings

(NO WEAR PADS TO REPLACE! ULTRA-EASY TO EXTEND/RETRACT)

- **SELF-SECURING SECURELOCK™** Tongue Lock (No Loose Pin)

STANDARD FEATURES (cont.)

- Oil Bath Hubs (Greaseable Option All)
- Electric Brakes
- Adjustable Spring Pads
- Slipper Springs
- Reinforced Spring Hangers
- **NON-BINDING/FREEZING EZ-SLIDE POLE-CENTERING STANCHIONS**
- Wheel Chock Holders
- Winch Binders w/ Ratcheting Breaker Bar (**BOA Crank Winch Optional**)
- Pole Rests: 5" H Beam (Level Lock Stanchions Optional)
- Front Pole Rests: 5" Sq Tube

STANDARD TRAILER BODY

- Heavy Duty 5" X 5" X ¼" Wall Male Extendable Tongue
- Heavy Duty 6" X 6" X ¼" Wall Female Structural Tube
- Base Frame: 7" Fish-Plated C-Channel
- 7-Position Adjustable Hitch
- ¾" X 36" GR70 Yellow Zinc Safety Chains with Hooks
- ½" Zinc Plated GR70 Safety Chains for Models Exceeding 18,000 lbs. GVWR
- Removable Male Extension Tongue
- Standard Cargo Area
- 12,000 lbs. Static Front Jack w/ Spring Return

FRONT POLE SEAT OPTIONS (Mounted on Male Tongue)

- 48" Wide 5" Sq Tube Pole Seat (Standard)
- 60" Wide 5" H-BEAM Pole Seat (Optional)

WIRING

- DOT / ICC-- FMVSS / CMVSS Approved LED ULTRA- HIGH VISIBILITY 180 DEGREE BULLET Marker and Clearance Lights
- LED Sealed Beam Rubber Mounted Stop, Turn, Tail and Marker Lights
- **Internal Cat Track** Protects Wiring (and air brakes if applicable)
- Removable Rear Access Door to Access Cat Track and Wiring
- Breakaway Kit with Absorbed Glass Mat (AGM) Battery
- 100% Sealed Heat-Shrunked Wiring Connections w/ Full Loom
- FULLY PROTECTED 7 or 6 Way Female Plug acts as Junction Box Recessed in FRAME RAIL. No Easily Damaged Plastic Junction Boxes

PAINT

- Biodegradable Pretreat Acid Cleaning
(Superior to re-used sandblasting material that can impregnate metals with oil)
- Seams Caulked

PAINT (cont.)

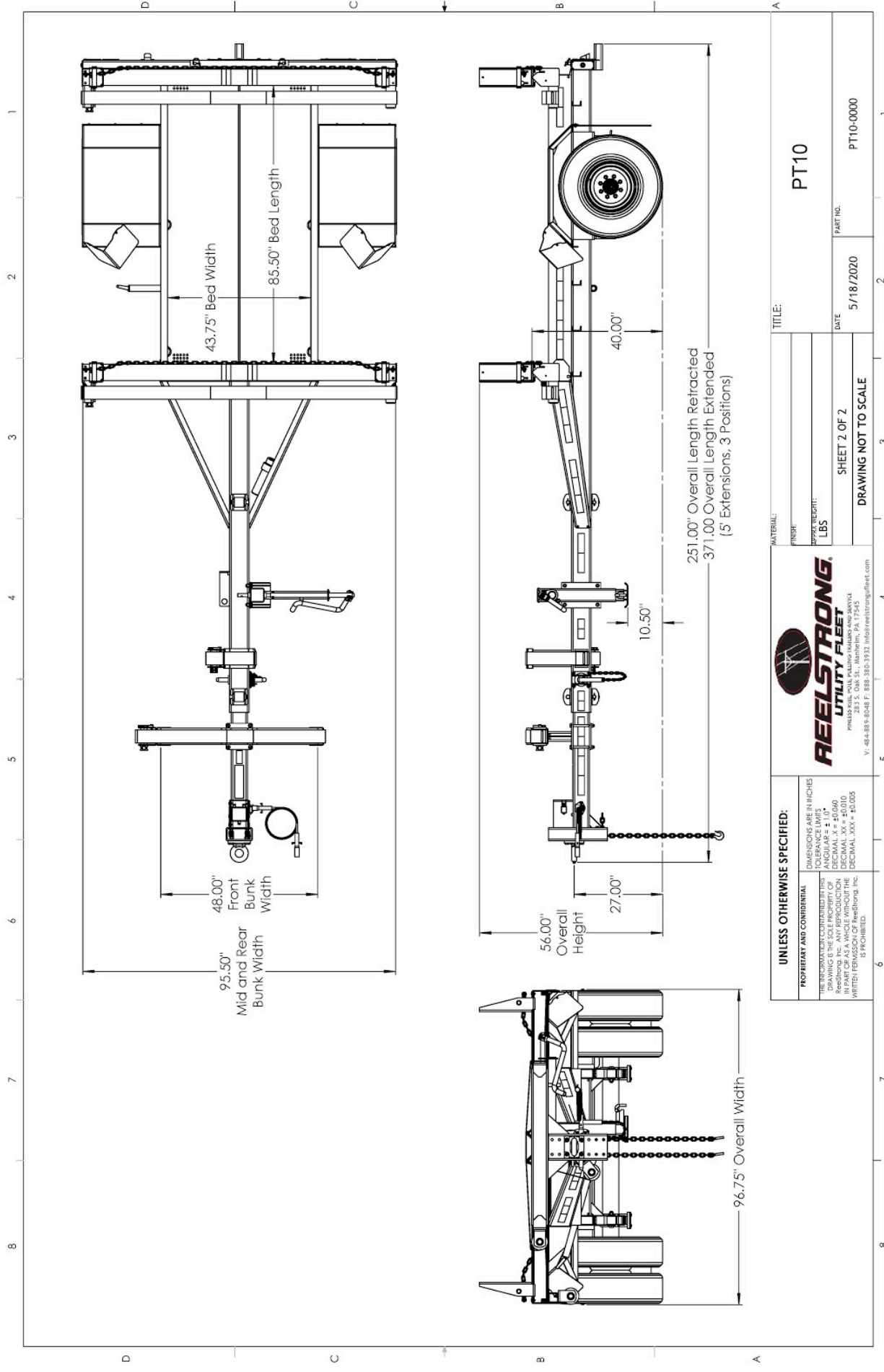
- Rust Preventative 2-Part Epoxy Primer
- Two-Part Polyurethane Topcoats (2 topcoats)
- Standard Colors: White and CAT Yellow (Custom Available)

OPTIONS

- 10-Year Galvanized Structural Warranty (2-Year Painted)
- BOA Hand Operated Ratcheting Pole Strap Winch for SAFETY and Ultra Ease-of-use
- Air Brakes w/ ABS
- Lever Lock Stanchions
- Wiring Connections Soldered and Sealed w/ Heat Shrink Tubing
- Plug-and-Play Sealco Wiring Harness
- Wheel Chocks: Rubber or All Weather Galvanized Grip Strut
- Spare Tire and Mount
- Extension Intervals to Customer Spec
- Solar Charged Breakaway Kit
- Quick-Rotate Swivel Jack
- 16" Long 6-Bolt Hitch Extension (w/ 52" Safety Chains and Breakaway Cable Extension)
- 3" Lunette Eye
- All Stainless Steel Fasteners (1/2" and under)
- Anti-Skid / Anti-Glare Sand Paint on all Walking Surfaces
- Various Trailer Light Plugs (Customer Choice)
- Spare Tire and Mount
- 6D-Rings Front, Center and Rear for Cargo / Transformers
- Front Removable / Adjustable Pole Seat Mounted on Front Male Tongue
(Not Recommended)
- Extension Configurations: Customizable
(additional / less extension increments available)
- Solar Charged Breakaway Kit
- Truck-Lite Lighting
- Lug Nut Indicators

OPTIONAL LIGHT BAR

- All TIG Welded Aluminum CLAW-TOOTHED SECURED
- Contains (4) Four 4" Stop/Turn / Tail Rubber Mounted Sealed Beam LED Lights
- (3) Three Center ID Marker Lights
- (2) Two Side Marker Lights
- 4-Way Die Cast Connector
- 35' Standard Electric Cable Length with a 4-Way Connector Plug



UNLESS OTHERWISE SPECIFIED:
 DIMENSIONS ARE IN INCHES
 TOLERANCE LIMITS
 ANGULAR ± 1.0°
 DECIMAL ± 0.0625
 DECIMAL .XX ± 0.010
 DECIMAL .XXX ± 0.005
 THE INFORMATION CONTAINED HEREIN IS THE SOLE PROPERTY OF REEELSTRONG, INC. ANY REPRODUCTION OR TRANSMISSION OF THIS DRAWING WITHOUT THE WRITTEN PERMISSION OF REEELSTRONG, INC. IS PROHIBITED.



MATERIAL:
FINISH:
APPROX. WEIGHT:
 LBS
SHEET 2 OF 2
DRAWING NOT TO SCALE

TITLE:
PT10
DATE: 5/18/2020
PART NO.: PT10-0000

1 2 3 4 5 6 7 8

D C B A