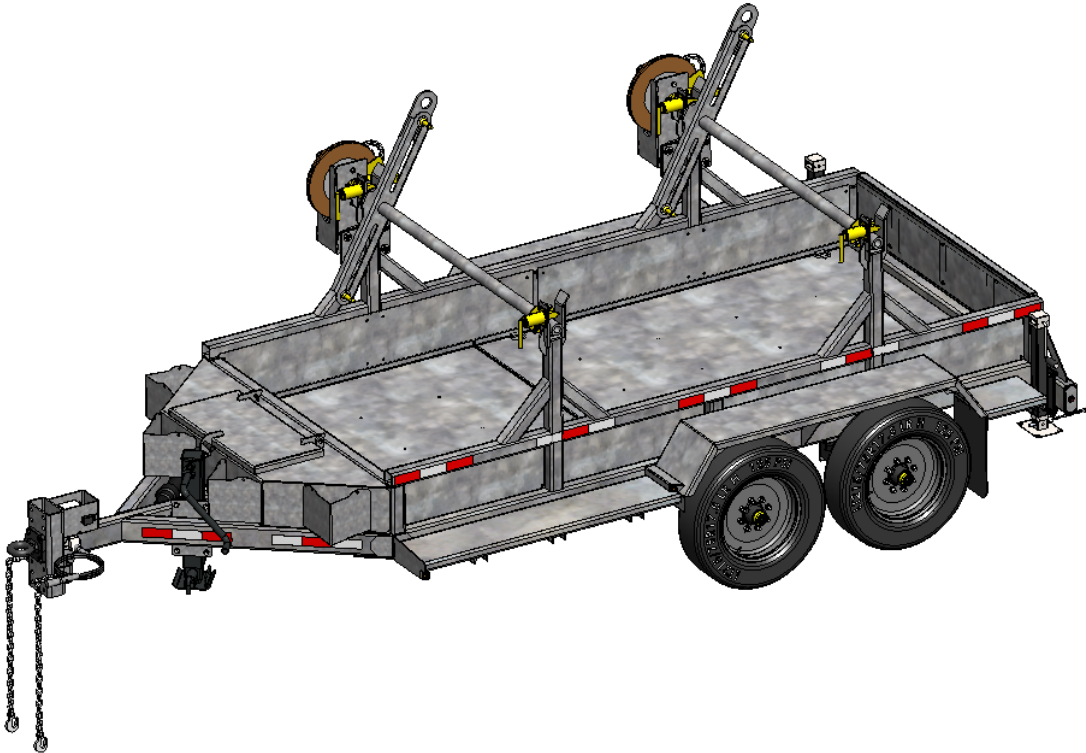


REELSTRONG[®]

UTILITY FLEET

MRST2-RC POWERLOCK™ REEL / CARGO TRAILER SPECS



EXCLUSIVE STANDARD ADDED VALUE:

- POWERLOCK™ Technology Provides Industry Leading Safety, Ease of Use, Low Maintenance and Durability.
 - SAFETY and Peace of Mind
 - No Pins, Cotters, or Lanyards that Secure the Reel Arbor (which is the most critical safety point).
 - Faster Reel Loading, Unloading, and Deployment Reduces Labor Costs and Fatigue on Workers.

BUILT FOR SAFETY. BUILT FOR SPEED. BUILT TO LAST.

CAPACITIES

- MRST2-RC-72-60: 18,400 GVWR @ 15% Tongue Weight

AXLES

- MRST2-RC-72-60: Tandem 8,000 lbs. Torsion

WHEELS (per axle)

- MRST2-RC-72-60: (4) 17.5 x 6.75 HC / 8 on 6.5 BC w/ 0.19 Inset

TIRES (per axle)

- MRST2-RC-72-60: (4) ST-215/75R17.5 LR-H Tires

BRAKES (per axle)

- MRST2-RC-72-60: 12.25" x 3.38" Electric w/ Safety Breakaway Kit

PAYLOAD: ALL FINAL PAYLOADS BASED ON CHOSEN MODEL AND OPTIONS**REEL / CARGO WEIGHT (PAYLOAD):**

- MRST2-RC-72-60: 14,000 lbs. (7,000 lbs. per Reel)

REEL DIAMETER: (2) 72" Maximum

REEL WIDTH: 60" Maximum

REEL SHAFT DIAMETER: 2.50" Tube w/ Centering Collars

OVERALL LENGTH: 219.25" Approx.

OVERALL WIDTH: 102"

OVERALL WEIGHT: 4,400 lbs. Approx. (Actual Trailer Weight will Vary with Options & Finishes Chosen)

STANDARD FEATURES

- POWERLOCK™ Technology Provides Industry Leading Safety, Ease of Use, Low Maintenance and Durability.
- Oil Bath Hubs (Greaseable Option All)
- Electric Brakes
- Wheel Chock Holders

STANDARD TRAILER BODY

- Heavy Duty 5" X 3" X ¼" Frame
- 6-Position Adjustable Hitch

—All specifications / designs are subject to change without notice - All GVWR and reel capacities are de-rateable to your needs.

STANDARD TRAILER BODY (cont.)

- 3/8" X 36" GR70 Yellow Zinc Safety Chains with Hooks
- 12,000lbs. Static Jack Front Jack w/ Spring Return
- Ground Lug: Copper Alloy Bolted to Frame
- Fenders: 1/8" Tread Plate
- Grip Strut Cat Walks
- Cargo Area: Approx. 66.5" Wide x 144" Long x 15" Tall
- Floor: 1/8" Steel Plate
- A-frame: 5' Long

WIRING

- DOT/ICC Approved LED Lights and Conspicuity Reflective Tape
- FMVSS / CMVSS Standard 108 LED Lighting
- Sealed Beam, Rubber Mounted Stop, Turn, Tail and Marker Lights
- Plug-and-Play Sealco Wiring Harness
- Breakaway Kit with Absorbed Glass Mat (AGM) Battery

PAINT

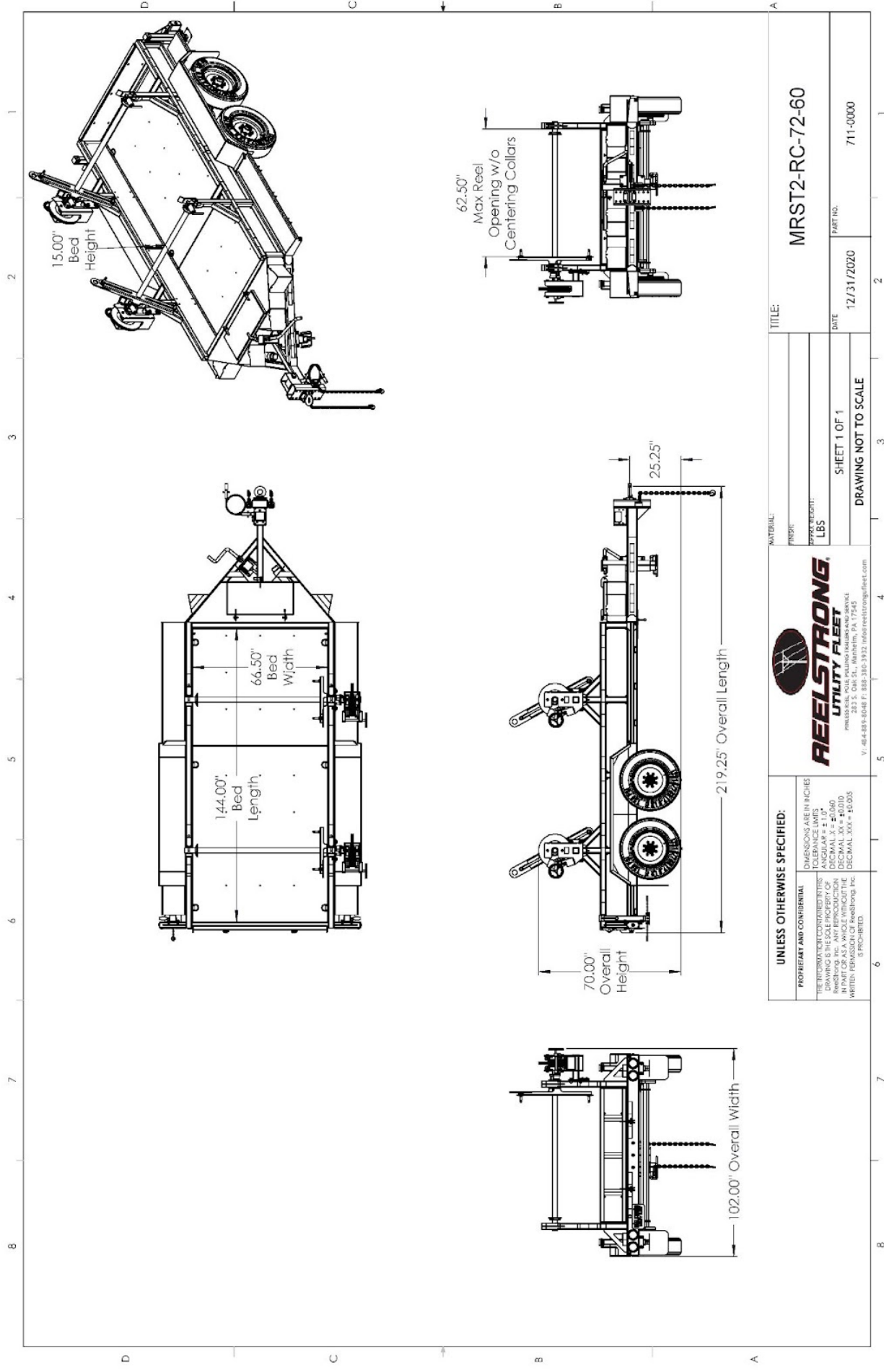
- Biodegradable Pretreat Acid Cleaning
(Superior to re-used sandblasting material that can impregnate metals with oil)
- Seams Caulked
- Rust Preventative 2-Part Epoxy Primer
- Standard Colors: Red, Black, White and CAT Yellow

OPTIONS

- 13 HP HONDA Engine Hydraulic Power Pack Comes STANDARD w/ ENGINE COVER, 15 Gallon Reservoir, Replaceable Oil Filter, Pressure Gauge and Solar Fade Resistant Plastic Control Placard. (Electric Start Optional)
- 10-Year Galvanized Structural Warranty (2-Year Painted)
- 3,300 or 4,800 ft/lbs Torque Hydraulic Take-up Retriever. (*Motor Spooled w/ Reel Brake ILO Cross-Over Relief Valve for Smooth Instant Reel Stoppage*)
- 2-7/16" Universal Adapter for Capstan and Power Reel Attachments
- 7 Inch General Purpose Capstan
- Collapsible Power Reel
- Rotating Arbor Ground
- Rewind Leveler
- 16" Bronze Alloy Ventilated Reel Brake w/ Ventilated Guard
- 16" Long 6-Bolt Hitch Extension (w/ 52" Safety Chains and Breakaway Cable Extension)
- 3" Lunette Eye
- Aluminum or Steel Toolbox
- 10K-HD / 15K / 20K Axles Available w/ Air Brakes
- Anti-Lock Brakes (ABS)

OPTIONS (cont.)

- Wiring Connections Soldered and Sealed w/Heat Shrink Tubing
- Wheel Chocks: Rubber or All Weather Galvanized Grip Strut
- Spare Tire and Mount
- Solar Charged Breakaway Kit
- Strobe Warning Lights
- All Stainless Steel Fasteners (½” and under)
- Hydraulic Front Jack
- Rear Underground Fairlead Roller Attachment (accommodates wooden plank rear gate)
- Lug Nut Indicators



TITLE: MRST2-RC-72-60	
MATERIAL:	
FINISH:	
WEIGHT (LBS):	
DATE: 12/31/2020	PART NO. 711-0000
SHEET 1 OF 1	
DRAWING NOT TO SCALE	

UNLESS OTHERWISE SPECIFIED:
 DIMENSIONS ARE IN INCHES
 TOLERANCE LIMITS:
 DECIMAL .125 = ±0.005
 DECIMAL .50 = ±0.010
 DECIMAL .XX = ±0.010
 DECIMAL .XXX = ±0.005
 IS PROHIBITED.



PROPRIETARY AND CONFIDENTIAL
 THE INFORMATION CONTAINED HEREIN IS
 DRAWING IS THE SOLE PROPERTY OF
 REELSTRONG UTILITY FLEET. NO PART
 IN PART OR AS A WHOLE WITHOUT THE
 WRITTEN PERMISSION OF Reelstrong, Inc.
 IS PROHIBITED.