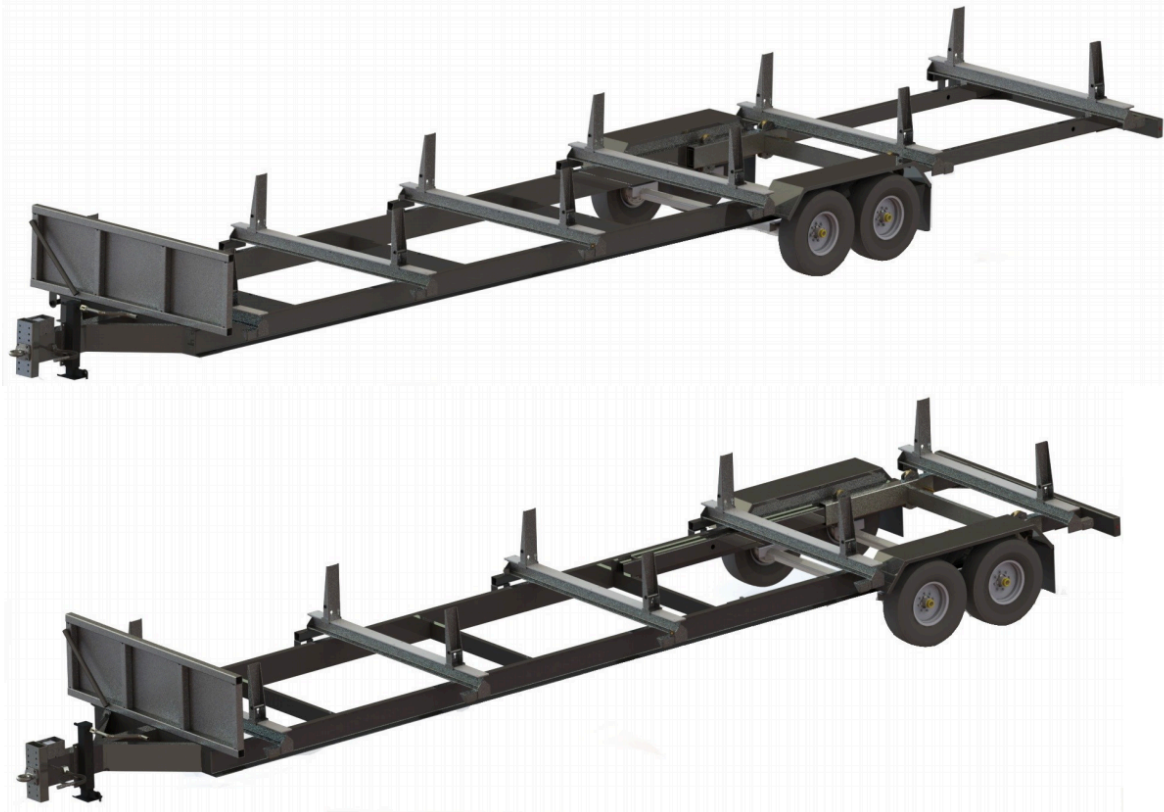


REELSTRONG®

UTILITY FLEET

SP-RE REAR EXTENDING STICK / PIPE TRAILER SPECS



EXCLUSIVE STANDARD ADDED VALUE:

- Industry Leading Safety, Ease of Use, Low Maintenance and Durability
- No-Bind EZ Slide Stanchions
- Low Center of Gravity
- UHMW Composite Bunk Pads w/ Countersunk Fasteners
- Front Bulkhead to Easily Load and Place Material
- Heavy Duty Winch Straps
- Great Price

BUILT FOR SAFETY. BUILT FOR SPEED. BUILT TO LAST.

CAPACITIES

- SP-RE14: 16,100 lbs. GVWR @ 15% Tongue Weight
- SP-RE20: 22,100 lbs. GVWR @ 15% Tongue Weight

AXLES

- SP-RE14: Tandem 7K lbs. Torsion
- SP-RE20: Tandem 10K lbs. Sprung

WHEELS

- SP-RE14: (4) 16 x 6K / 8 on 6.5 BC w/ Zeraset
- SP-RE20: (4) 17.50 x 6.75 HC / 8 on 6.5 BC w/ 0.19 Inset

TIRES

- SP-RE14: (4) ST-235/85R16 LR-E Tires
- SP-RE20: (4) ST-215/75R17 LR-H Tires

BRAKES

- SP-RE14: 12.00" x 2.00" Electric w/ Safety Breakaway Kit
- SP-RE20: 12.25" x 3.38" Electric w/ Safety Breakaway Kit

PAYLOAD: ALL FINAL PAYLOADS BASED ON CHOSEN MODEL AND OPTIONS

OVERALL LENGTH

- Bed Length: 33' (Retracted) and 40' (Extended)
- Overall Length: 45.3'

OVERALL WIDTH: 96" (customizable)

OVERALL WEIGHT: Actual Trailer Weight will Vary with Options & Finishes Chosen.

POLE SEAT HEIGHT: 34"

STANDARD FEATURES

- No-Bind EZ Slide Stanchions
- Oil Bath Hubs (Greaseable Option All)
- Electric Brakes
- Wheel Chock Holders
- Heavy Duty Winch Straps
- Front Bulkhead to Easily Load and Place Material
- Low Center of Gravity

POLE SECUREMENT

- Pole Rests: 5" H Beam w/ UHMW Composite Pads
- Winch Binders, Ratcheting Breaker Bar and Bar Pocket

STANDARD TRAILER BODY

- Heavy Duty 12" Channel Frame
- Heavy Duty 6" Channel Crossmembers
- 7-Position Adjustable Hitch
- 3/8" X 36" GR70 Yellow Zinc Safety Chains with Hooks
- 12,000 lbs. Static Front Jack w/ Spring Return

WIRING

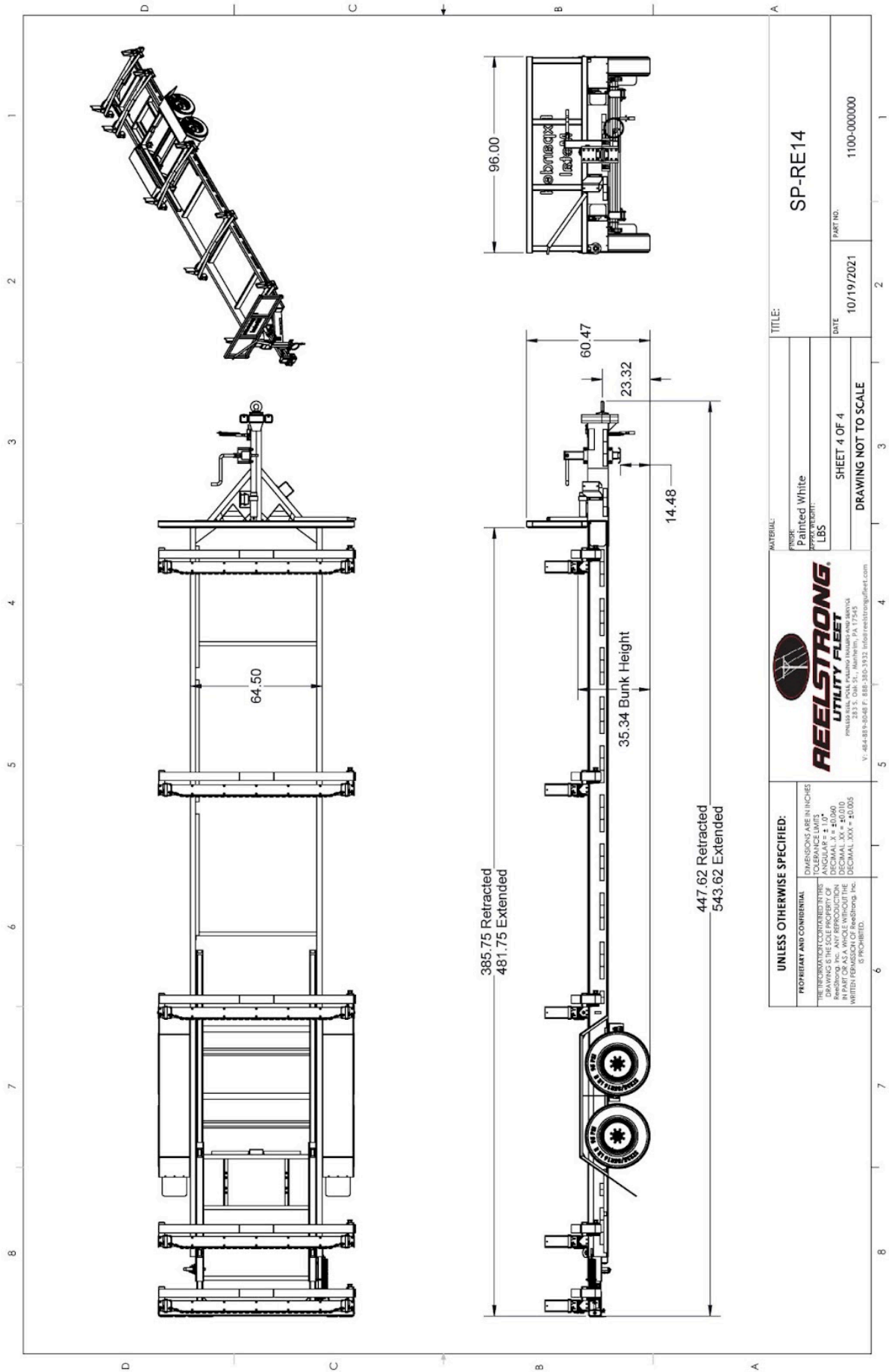
- DOT / ICC Approved LED Lights and Conspicuity Reflective Tape
- Internal Cat Track Protects Wiring (and air brakes if applicable)
- Removable Rear Access Door for Cat Track and Wiring
- Sealed Beam, Rubber Mounted Stop, Turn, Tail and Marker Lights
- 100% Sealed Heat-Shrunked Wiring Connections w/ Full Loom
- Breakaway Kit with Absorbed Glass Mat (AGM) Battery

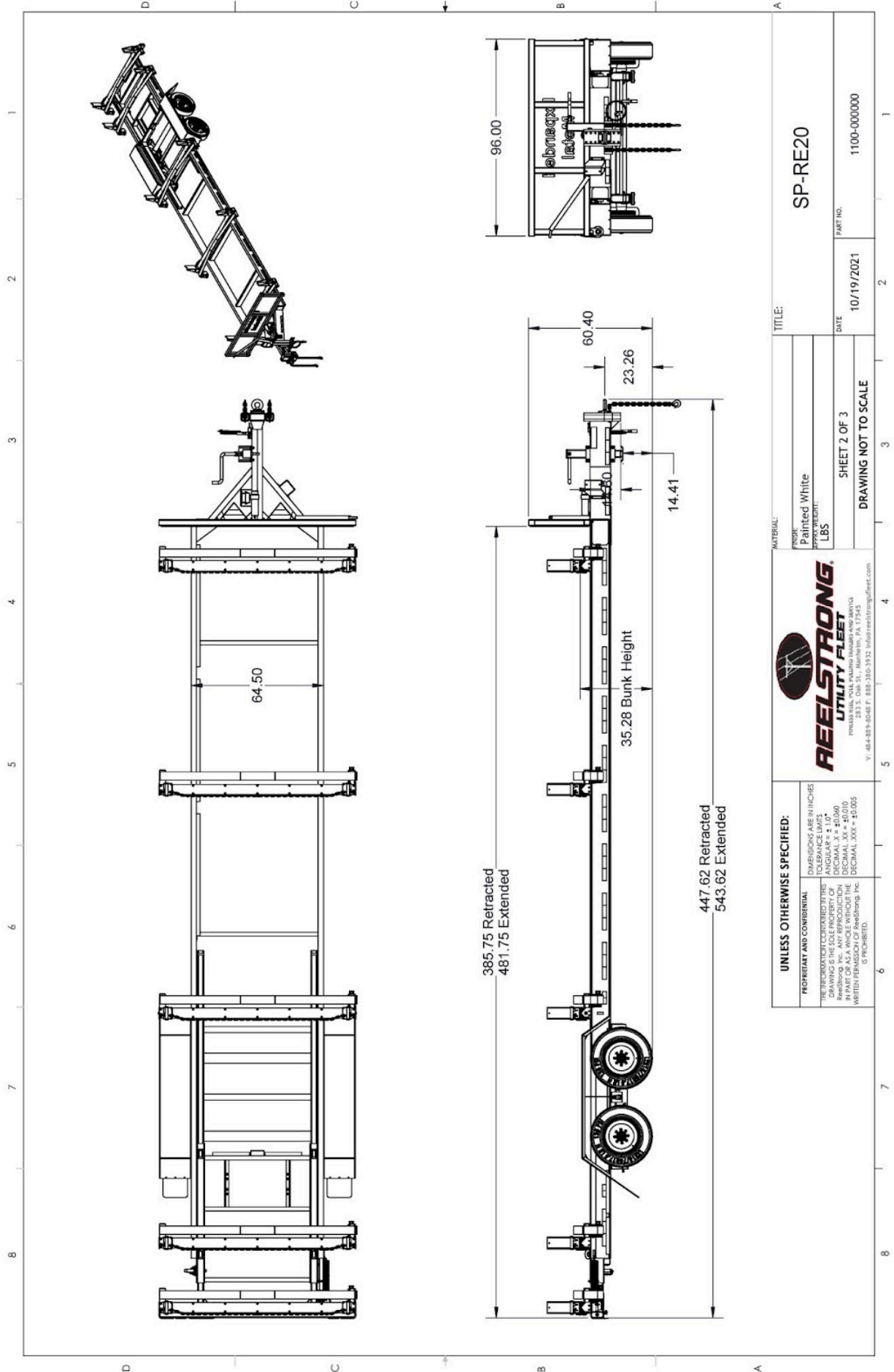
PAINT

- Biodegradable Pretreat Acid Cleaning
(Superior to re-used sandblasting material that can impregnate metals with oil)
- Seams Caulked
- Rust Preventative 2-Part Epoxy Primer
- Standard Colors: Red, Black, White and CAT Yellow

OPTIONS

- 10-Year Galvanized Structural Warranty (2-Year Painted)
- 10K-HD / 15K / 20K Axles Available w/ Air Brakes
- Anti-Lock Brakes (ABS)
- 16" Long 6-Bolt Hitch Extension (w/ 52" Safety Chains and Breakaway Cable Extension)
- 3" Lunette Eye
- Wiring Connections Soldered and Sealed w/ Heat Shrink Tubing
- Plug-and-Play Sealco Wiring Harness
- Wheel Chocks: Rubber or All Weather Galvanized Grip Strut
- Spare Tire and Mount
- Solar Charged Breakaway Kit
- Truck-Lite Lighting
- Lug Nut Indicators





UNLESS OTHERWISE SPECIFIED:

PROPRIETARY AND CONFIDENTIAL

ALL DIMENSIONS ARE IN INCHES
UNLESS OTHERWISE SPECIFIED

ANGLE ± 1.0°
DECIMAL X = ± 0.060
DECIMAL XX = ± 0.030
DECIMAL XXX = ± 0.005

IF THIS DRAWING IS REPRODUCED OR TRANSMITTED IN ANY FORM OR BY ANY MEANS, WITHOUT THE WRITTEN PERMISSION OF REELSTRONG, INC. IT IS PROHIBITED.

REELSTRONG
UTILITY FLEET

233 S. Oak St., Malvern, PA 17543
TEL: 866-887-8588 FAX: 866-280-3332 info@reelstrong.com

MATERIAL: Painted White
FINISH: LBS

APPROX WEIGHT: SHEET 2 OF 3
DRAWING NOT TO SCALE

TITLE: SP-RE20

DATE: 10/19/2021

PART NO.: 1100-000000