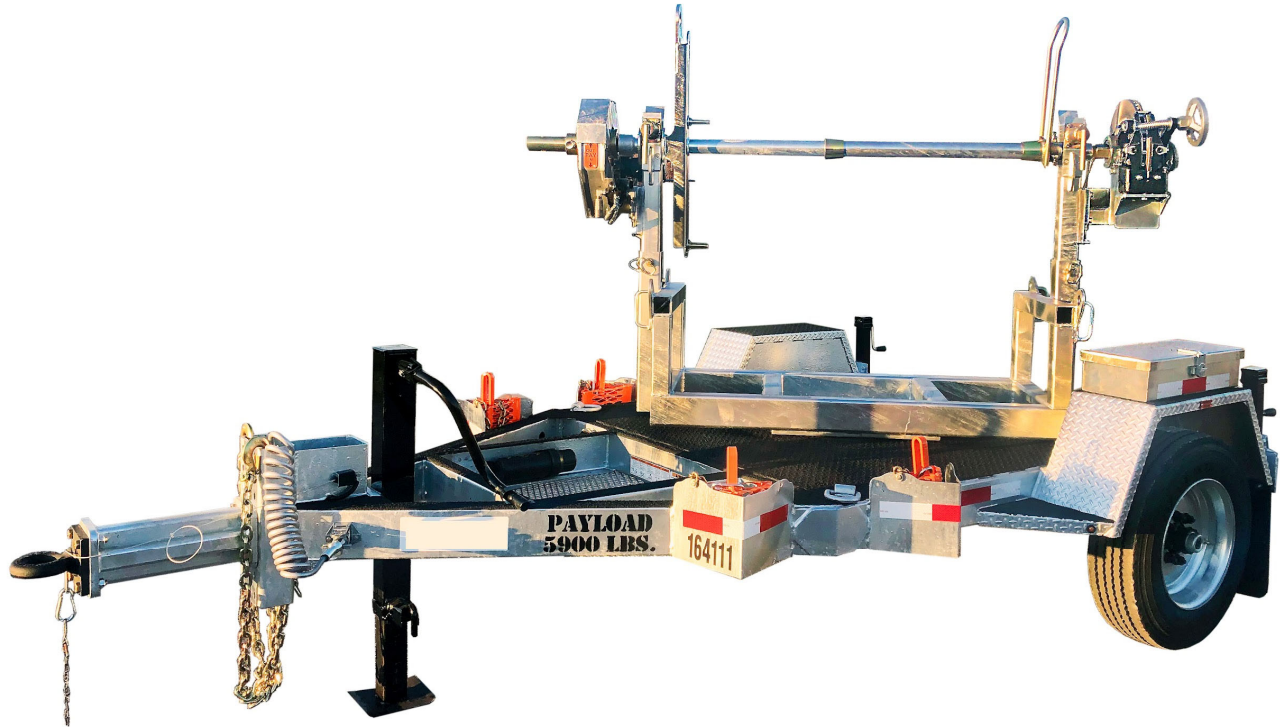




PL-1RT POWERLOCK™ REEL TRAILER SPECS



LOWEST TOTAL COST OF OWNERSHIP (TCO) FROM:

- **LIFETIME WARRANTY PINLESS POWERLOCK™** Reel Bar Securement
- **INDUSTRY LEADING 20" OVERSIZED TURRET BEARING**
 - 250K Axial, 90K ft/lbs Moment Load Lockable on 3 Degree Intervals
- **INDUSTRY LEADING 24" OVERSIZED TURRET BEARING (PL-1RT10-DO)**
 - Lockable on 3 Degree Intervals
- **OPEN TOP, "NON ENCAPSULATED" NYLATRON BEARING SADDLE** (low-coefficient of friction). OPEN TOP = LESS FRICTION/LOW MAINTENANCE and EASIER PAY-OUT.
- **No Pins or Cotters to Secure Reel Bar** (*most critical safety point*)
- **Yellow Zinc Electro-Plated and Stainless Precision Machined Components**
- **PRACTICAL:** No Expensive, Unnecessary Bronze Components, yet we Don't Cut Corners and Provide Premium, Heavy Duty, Top-Quality Latches, Hardware, Fittings and Components.

BUILT FOR SAFETY. BUILT FOR SPEED. BUILT TO LAST.

CAPACITIES

- PL-1RT6: 9,200 lbs. GVWR @ 15% Tongue Weight
- PL-1RT8: 11,050 lbs. GVWR @ 15% Tongue Weight
- PL-1RT8-DO: 13,800 lbs. GVWR @ 15% Tongue Weight

AXLES

- PL-1RT6: 8K lbs. Torsion
- PL-1RT8: 10K lbs. Sprung
- PL-1RT8-DO: 12K lbs. Sprung

WHEELS

- PL-1RT6: (2) 17.5 x 6.75 HC / 8 on 6.5 BC w/ 0.19 Inset
- PL-1RT8: (2) 17.5 x 6.75 HC / 8 on 6.5 BC w/ 0.19 Inset
- PL-1RT8-DO: (2) 17.5 x 6.75 HC / 8 on 6.5 BC w/ 0.19 Inset

TIRES

- PL-1RT6: (2) ST-215/75R17.5 LR-H Tires
- PL-1RT8: (2) ST-215/75R17.5 LR-H Tires
- PL-1RT8-DO: (2) ST-235/75R17.5 LR-J Tires

BRAKES

- PL-1RT6: 12.25" x 3.38" Electric w/ Safety Breakaway Kit
- PL-1RT8: 12.25" x 3.38" Electric w/ Safety Breakaway Kit
- PL-1RT8-DO: 12.25" x 5.00" Electric w/ Safety Breakaway Kit

PAYLOAD: ALL FINAL PAYLOADS BASED ON CHOSEN MODEL AND OPTIONS

REEL WEIGHT (PAYLOAD)

- PL-1RT6: 6,200 lbs. Approx. (payload lowers as options chosen)
- PL-1RT8: 8,000 lbs. Approx. (payload lowers as options chosen)
- PL-1RT8-DO: 8,000 lbs. Approx. (payload lowers as options chosen)

(ADDITIONAL WEIGHT OF OPTIONS REDUCES PAYLOAD)

REEL DIAMETER: Adjustable positions from 72", 84" to 96"

REEL WIDTH:

- PL-1RT6: 54" Max
- PL-1RT8: 54" Max
- PL-1RT8-DO: 60" Max

REEL BAR DIA: 2.5"

REEL BAR DIA: 3.00" (PL-1RT10-DO)

LENGTH:

- PL-1RT6: 151" Approx.
- PL-1RT8: 151" Approx.
- PL-1RT8-DO: 164.50" Approx.

WIDTH:

- PL-1RT6: 96" Approx.
- PL-1RT8: 96" Approx.
- PL-1RT8-DO: 101.75" Approx.

CURB WEIGHT:

- PL-1RT6: 3,000 lbs. Approx.
 - PL-1RT8: 3,050 lbs. Approx.
 - PL-1RT8-DO: 4,100 lbs. Approx.
- Trailer Weight will Vary with Options & Finishes Chosen.*

STANDARD FEATURES

- **PINLESS POWERLOCK™** **LIFETIME WARRANTY** **VIRTUALLY ZERO MAINTENANCE** Yellow Zinc Electroplated
- **INDUSTRY LEADING 20" OVERSIZED TURRET BEARING w/ 250K Axial, 90K ft/lbs Moment Load Lockable on 3 Deg. Intervals**
- **OPEN TOP, "NON ENCAPSULATED" NYLATRON BEARING SADDLE** (low-coefficient of friction). OPEN TOP = LESS FRICTION/LOW MAINTENANCE and EASIER PAY-OUT. (Haven't Replaced a Saddle in 14 Years)
- Oil Bath Hubs (Greaseable Option All)
- Electric Brakes
- Wheel Chock Holders
- Removable Turrets to Turn Trailer into Flatbed, if Needed.
- Three (3) POINT STEPS AND HANDHOLDS STANDARD**

STANDARD TRAILER BODY

- Heavy Duty 6" X 3" X 1/4" Frame
- 6-Position Adjustable Hitch
- 3/8" X 36" GR70 Yellow Zinc Safety Chains with Hooks
- 12,000 lbs. Static Front Jack w/ Spring Return
- Ground Lug: Copper Alloy Star Washer Bolted to Frame (Welded Optional)
- Fenders: 1/8" Fabricated Diamond Plate
- (2) Rear 8,000 lbs. Static Stabilizer Jacks

WIRING

- DOT / ICC-- FMVSS / CMVSS Approved LED ULTRA- HIGH VISIBILITY 180 DEGREE BULLET Marker and Clearance Lights
- LED Sealed Beam Rubber Mounted Stop, Turn, Tail and Marker Lights
- Breakaway Kit with Absorbed Glass Mat (AGM) Battery

WIRING (cont.)

- 100% Sealed Heat-Shrunked Wiring Connections w/ Full Loom
- FULLY PROTECTED 7 or 6 Way Female Plug acts as Junction Box Recessed in FRAME RAIL.
No Easily Damaged Plastic Junction Boxes

PAINT

- Biodegradable Pretreat Acid Cleaning (Superior to re-used sandblasting material that can impregnate metals with oil)
- Seams Caulked
- Rust Preventative 2-Part Epoxy Primer
- Two-Part Polyurethane Topcoats (2 topcoats)
- Standard Colors: White and CAT Yellow (Custom Available)
- Ten (10) Year Galvanized Structural Warranty (2-Year Painted)

OPTIONS

- 13 HP HONDA Engine Hydraulic Power Pack Comes STANDARD w/ ENGINE COVER, 15 Gallon Reservoir, Replaceable Oil Filter, Pressure Gauge and Solar Fade Resistant Plastic Control Placard. (Electric Start Optional)
- 3,300 ft/lbs Torque Hydraulic Take-up Retriever. (Motor Spooled w/ Reel Brake ILO Cross-Over Relief Valve for Smooth Instant Reel Stoppage)
- 2-7/16" Universal Adapter for Capstan and Power Reel Attachments
- Hydraulic Hose Rotary Swivel Union (*manages & eliminates loose hydraulic hoses*)
- 7 Inch General Purpose Capstan
- Collapsible Power Reel
- 16" Bronze Alloy Ventilated Reel Brake w/ Ventilated Guard
- 16" Long 6-Bolt Hitch Extension (w/ 52" Safety Chains and Breakaway Cable Extension)
- 3" Lunette Eye
- Rotating Arbor Ground
- All Stainless Steel Fasteners (1/2" and under)
- Anti-Skid/Anti-Glare Sand Paint on all Walking Surfaces
- Various Trailer Light Plugs (Customer Choice)
- Aluminum or Steel Toolbox
- Air Brakes w/ ABS
- Wiring Connections Soldered and Sealed w/ Heat Shrink Tubing
- Plug-and-Play Sealco Wiring Harness
- Wheel Chocks: Rubber or All Weather Galvanized Grip Strut
- Spare Tire and Mount
- Solar Charged Breakaway Kit
- Strobe Warning Lights
- Hydraulic Front Jack
- Hydraulic Rear and Intermediate Outriggers
- Telescoping Rear and Intermediate Outriggers
- Truck-Lite Lighting
- Lug Nut Indicators

OPTIONS (cont.)

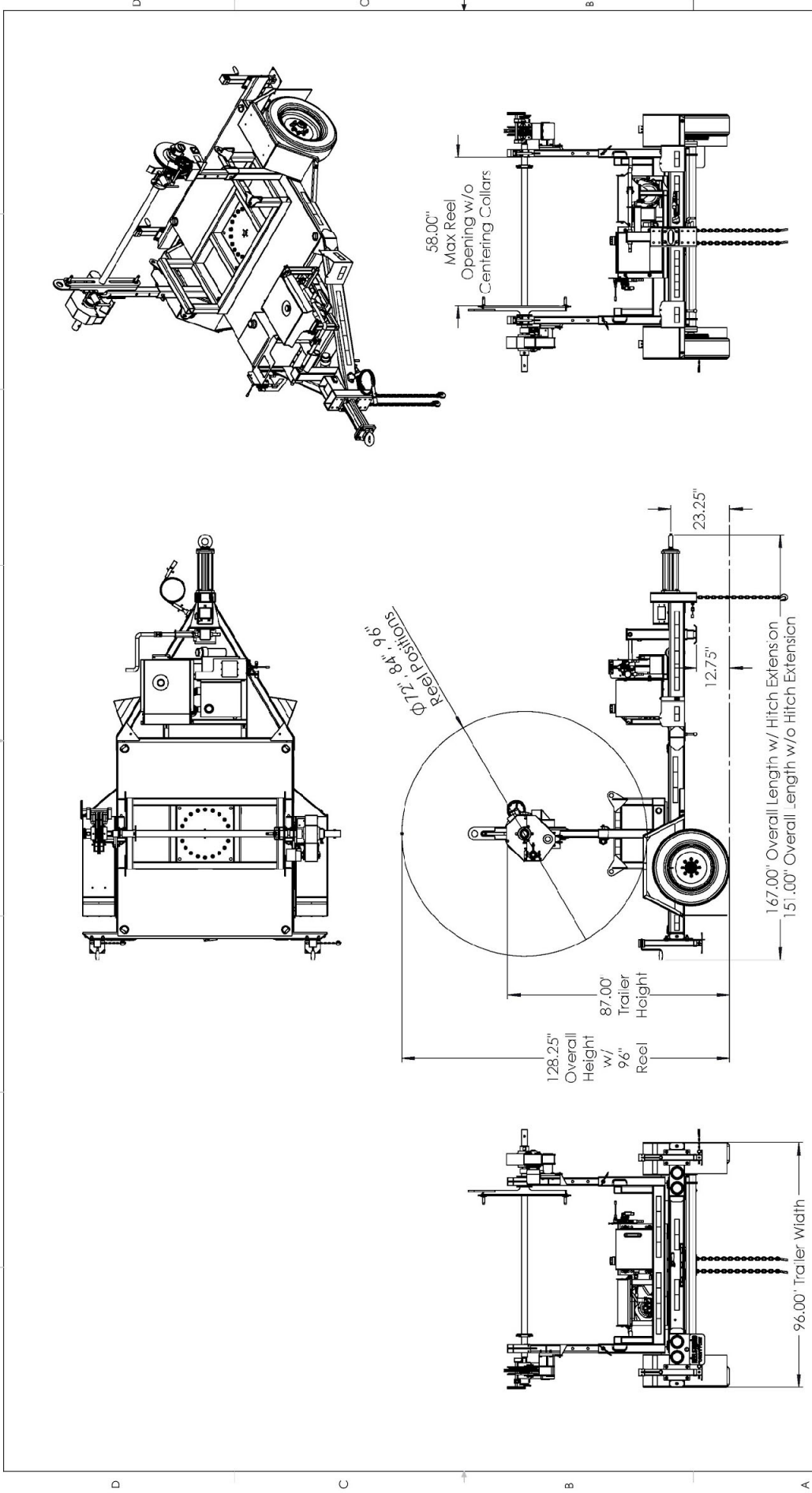
OPTIONAL PREMIUM ROLLER PACKAGE

- OVD Fairlead Rollers (One “1” Per Turret)
- URD Fairlead Rollers (Two “2” Per Turret)
- OVD/URD Cable Gathering Windows
- URD Arching/Traversing Fairlead

OPTIONAL ECONOMY ROLLER PACKAGE

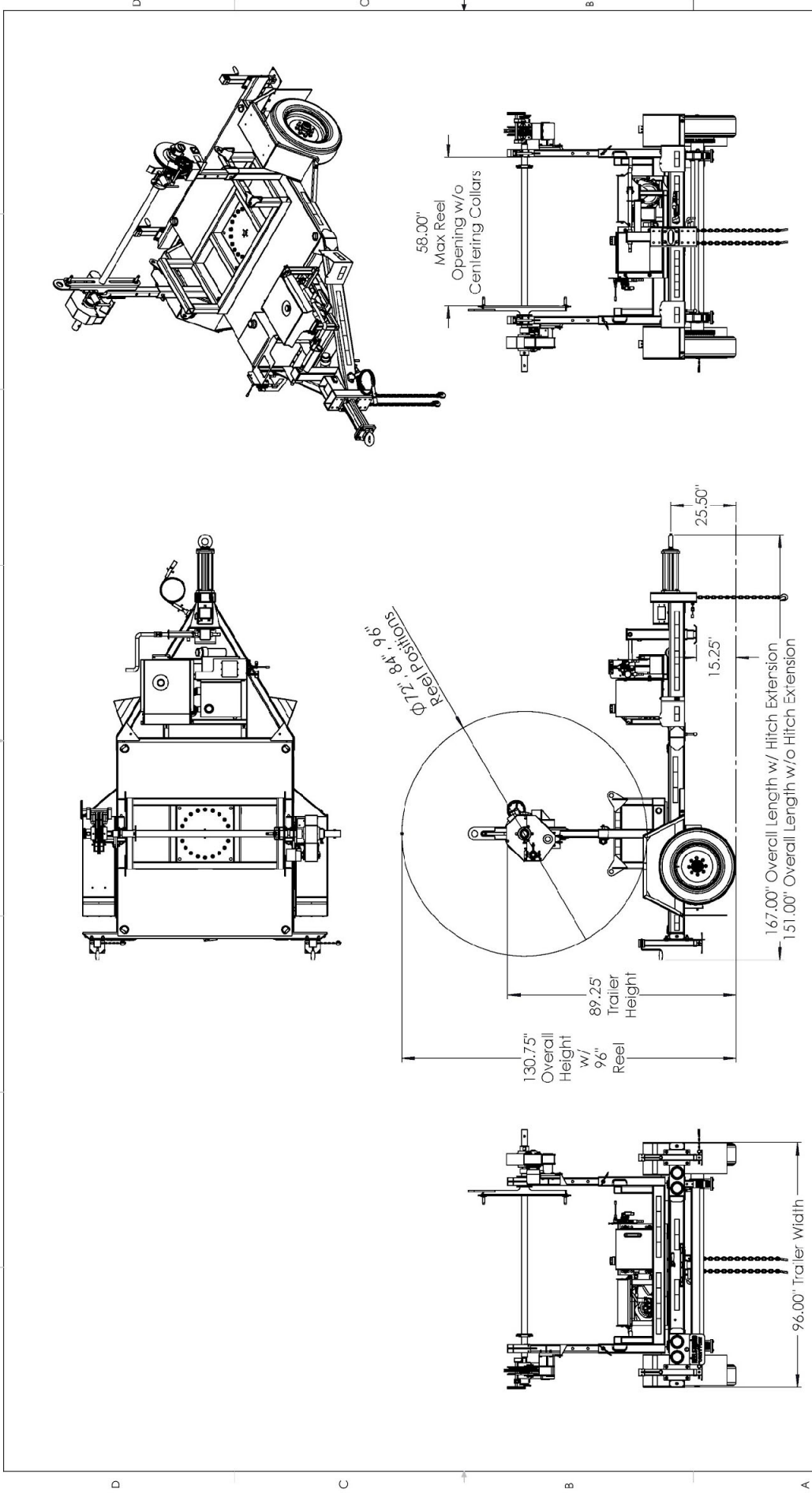
- OVD Fairlead Rollers (One “1” Per Turret)
- URD Fairlead Rollers (Two “2” Per Turret)
- OVD/URD Cable Gathering Windows
- URD Cable Gathering Window

1 2 3 4 5 6 7 8

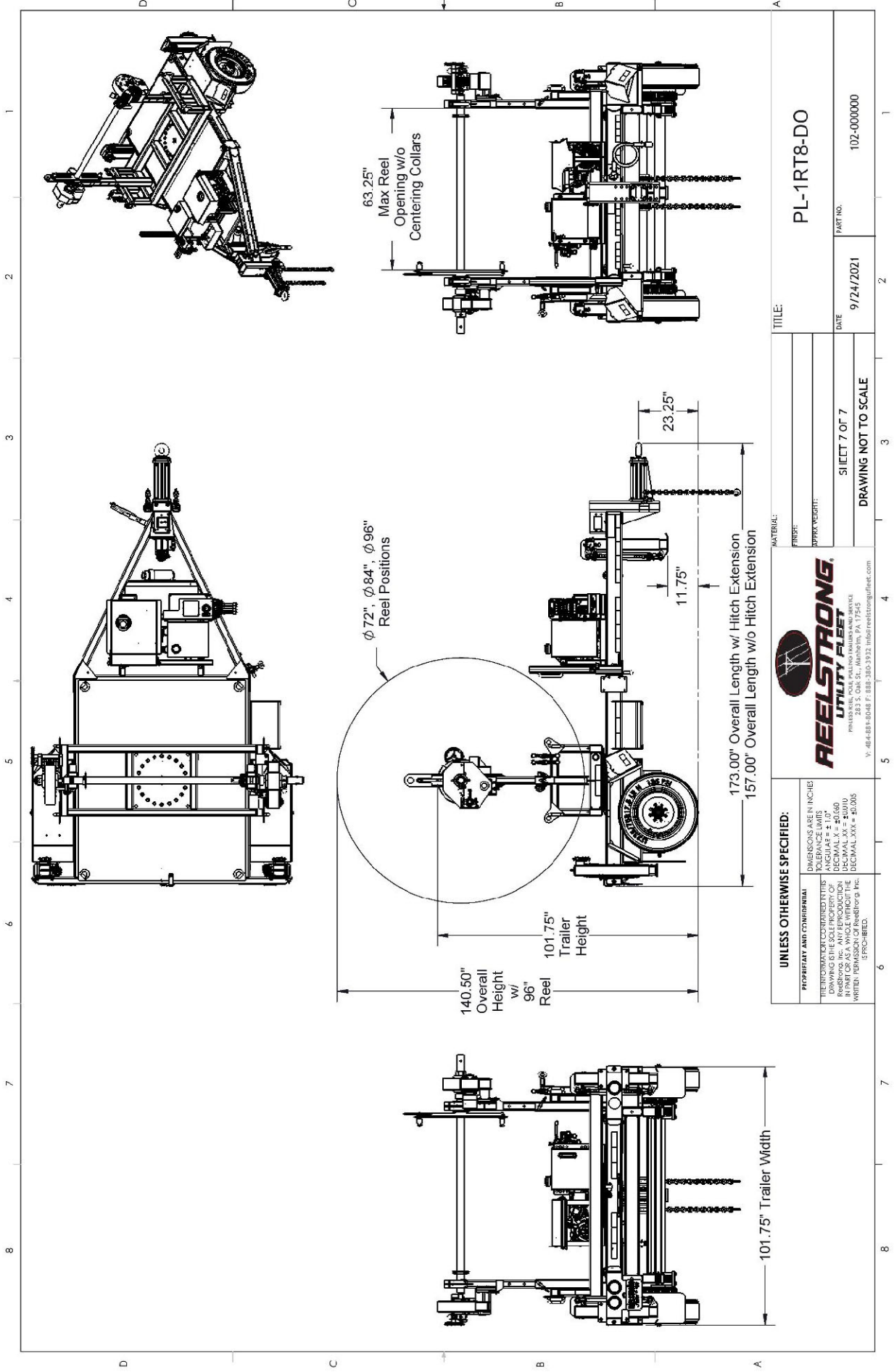


TITLE: PL-1RT6		PART NO. PL-1RT6-0000	
DATE 7/8/2020		DRAWING NOT TO SCALE	
SHEET 6 OF 6		DRAWING NOT TO SCALE	
MATERIAL: LBS		DRAWING NOT TO SCALE	
PROPERTY: REELSTRONG UTILITY FLIGHT		DRAWING NOT TO SCALE	
UNLESS OTHERWISE SPECIFIED:		DRAWING NOT TO SCALE	
DIMENSIONS ARE IN INCHES		DRAWING NOT TO SCALE	
TOLERANCE LIMITS		DRAWING NOT TO SCALE	
DIMENSIONAL TOLERANCES		DRAWING NOT TO SCALE	
DECIMAL: .XX = +0.010		DRAWING NOT TO SCALE	
FRACTIONAL: XX/64 = +0.005		DRAWING NOT TO SCALE	
WELDED PERMITS OF REELSTRONG, INC.		DRAWING NOT TO SCALE	
IS PROHIBITED.		DRAWING NOT TO SCALE	
REELSTRONG UTILITY FLIGHT		DRAWING NOT TO SCALE	
203 S. Oak St., Wallingford, VT 05495		DRAWING NOT TO SCALE	
V: 464-859-8048 F: 888-330-3932 info@reelstrong.com		DRAWING NOT TO SCALE	

8 7 6 5 4 3 2 1



UNLESS OTHERWISE SPECIFIED:		TITLE: PL-1RT8	
PROPRIETARY AND CONFIDENTIAL	DIMENSIONS ARE IN INCHES	MATERIAL:	
THE INFORMATION CONTAINED IN THIS DRAWING IS THE SOLE PROPERTY OF REELSTRONG, INC. ANY REUSE OR REPRODUCTION IN ANY FORM OR BY ANY MEANS WITHOUT THE WRITTEN PERMISSION OF REELSTRONG, INC. IS PROHIBITED.	TOLERANCE LIMITS DIMENSIONAL: ±0.005 DECIMAL: XX ±0.010 FRACTIONAL: XX ±0.005	FROM:	
		UPPER TOLERANCE:	
		LBS	
		SHEET 6 OF 6	
		DATE: 7/8/2020	
		DRAWING NOT TO SCALE	
		PART NO. PL-1RT8-0000	



UNLESS OTHERWISE SPECIFIED:		REELSTRONG [®] UTILITY FLEET		TITLE: PL-1RT8-DO	
PROPRIETARY AND CONFIDENTIAL	DIMENSIONS ARE IN INCHES	FROM:	MATERIAL:	DATE:	PART NO.
THE INFORMATION CONTAINED HEREIN IS THE SOLE PROPERTY OF REELSTRONG, INC. AND IS TO BE USED ONLY IN CONNECTION WITH THE REELSTRONG, INC. REEL. NO REPRODUCTION OR TRANSMISSION IN ANY FORM OR BY ANY MEANS, WITHOUT THE WRITTEN PERMISSION OF ReelStrong, Inc. IS PROHIBITED.	TOLERANCE LIMITS DIMENSIONAL XX = ±0.005 DIMENSIONAL XX = ±0.010 DIMENSIONAL XXX = ±0.005	APPROX. WEIGHT:		9/24/2021	102-000000
		SHEET 7 OF 7		DRAWING NOT TO SCALE	