

REELSTRONG[®]

UTILITY FLEET

CL8 AUTOLOCK[™] REEL TRAILER SPECS



LOWEST TOTAL COST OF OWNERSHIP (TCO) From:

- **LIFETIME WARRANTY PINLESS AUTOLOCK[™]** Reel Bar Securement
- No Pins or Cotters to Secure Reel Bar (*most critical safety point*).
- Fastest, Safest Loading, Unloading and Deployment Reduces Labor .
- Yellow Zinc Electro-Plated and Stainless Precision Machined Components
- **PRACTICAL:** No Expensive, Unnecessary Bronze Components, yet we Don't Cut Corners and Provide Premium, Heavy Duty, Top-Quality Latches, Hardware, Fittings and Components.

BUILT FOR SAFETY. BUILT FOR SPEED. *BUILT TO LAST.*

CAPACITY: 11,050 lbs. GVWR @ 15% Tongue Weight

AXLES: 10K lbs. Torsion

WHEELS: (2) 17.5 x 6.75 HC / 8 on 6.5 BC w/ 0.19 Inset

TIRES: (2) ST-215/75R17.5 LR-H Tires

BRAKES: 12.25" x 3.38" Electric w/ Safety Breakaway Kit

REEL WEIGHT (PAYLOAD): 8,500 lbs. Approx (w/out Options) (6,800 lbs w/ all Primary Options)

REEL DIA: 96" Max

REEL WIDTH: 60" Max

REEL BAR DIA: 2.5" Heavy Wall Tube w/ Centering Collars (Concentric Cone Collars Optional)

LENGTH: 150" Approx.

WIDTH: 102"

WEIGHT: 2,550 lbs. Approx. (Final Trailer Weight Varies w/ Chosen Options & Finish)

STANDARD FEATURES

- **LIFETIME WARRANTY PINLESS AUTOLOCK™**
- Oil Bath Hubs (Greaseable Option All)
- Electric Brakes
- Wheel Chock Holders
- Dexter Axles
- OPEN TOP, "NON ENCAPSULATED" NYLATRON BEARING SADDLE (low-coefficient of friction). OPEN TOP = LESS FRICTION/LOW MAINTENANCE and EASIER PAY-OUT. (Haven't Replaced a Saddle due to Wear in 13 Years)

STANDARD TRAILER BODY

- 6" X 2" X ¼" Frame
- 6-Position Adjustable Hitch
- ¾" X 36" GR70 Yellow Zinc Safety Chains with Hooks
- 12,000 lbs. Static Front Jack w/ Spring Return
- Ground Lug: Copper Alloy Star Washer Bolted to Frame (Welded Optional)
- Fenders: ⅛" Fabricated Diamond Plate
- Quick Deploy Outriggers (no loose pins)

—All specifications / designs are subject to change without notice - GVWR and reel capacities de-rateable to your needs.

STANDARD TRAILER BODY (cont.)

- DOT Reflective Conspicuity Tape
- All Attachments Painted or Galvanized prior to Assembly and Installed with Removable Fasteners

LIGHTS/WIRING

- DOT / ICC-- FMVSS / CMVSS Approved LED ULTRA- HIGH VISIBILITY 180 DEGREE BULLET Marker and Clearance Lights
- LED Sealed Beam Rubber Mounted Stop, Turn, Tail and Marker Lights
- 100% Sealed Heat-Shrunked Wiring Connections w/ Full Loom
- Breakaway Kit with Absorbed Glass Mat (AGM) Battery
- FULLY PROTECTED 7 or 6 Way Female Plug acts as Junction Box Recessed in FRAME RAIL. No Easily Damaged Plastic Junction Boxes!

PAINT

- Biodegradable Pretreat Acid Cleaning
(Superior to re-used sandblasting material that can impregnate metals with oil)
- Seams Caulked
- Rust Preventative 2-Part Epoxy Primer
- Two-Part Polyurethane Topcoats (2 topcoats)
- Standard Colors: White and CAT Yellow (Custom Available)

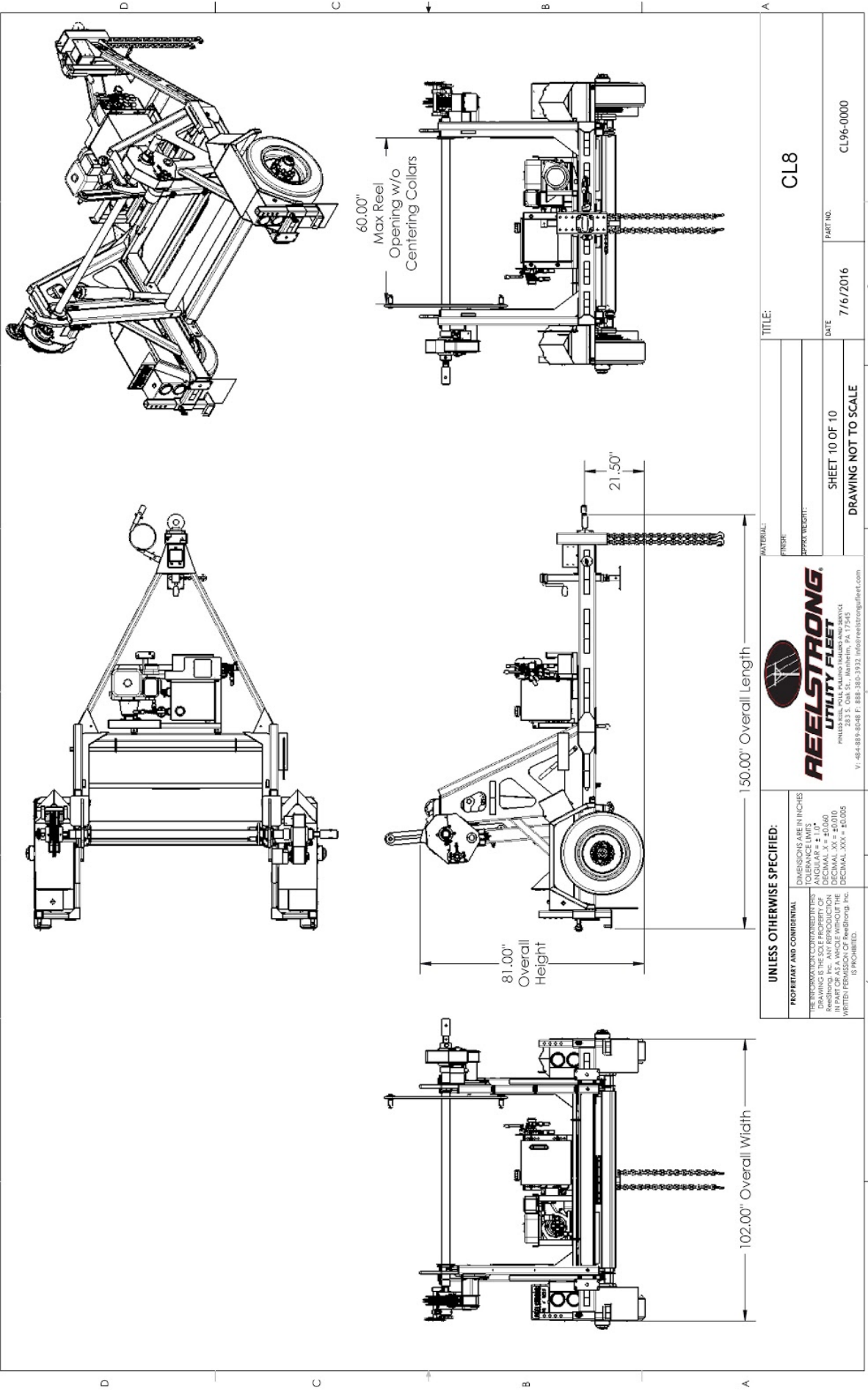
OPTIONS

- 13 HP HONDA Engine Hydraulic Power Pack Comes STANDARD w/ ENGINE COVER, 15 Gallon Reservoir, Replaceable Oil Filter, Pressure Gauge and Solar Fade Resistant Plastic Control Placard. (Electric Start Optional)
- Ten (10) Year Galvanized Structural Warranty (2-Year Painted)
- 16" Bronze Alloy TRU-STOP Ventilated Reel Brake w/ Ventilated Guard
- 3,300 ft/lbs Torque Hydraulic Take-up Retriever. (Motor Spooled w/ Reel Brake ILO Cross-Over Relief Valve for Smooth Instant Reel Stoppage)
- 2-7/16" Universal Adapter for Capstan, Collapsible Reel or Slip-Clutch Fiber-Optic Reels
- 7 Inch General Purpose Capstan
- Collapsible Power Reel
- Slip-Clutch Fiber-Optic Pulling Capstan
- Cable Rewind Leveler
- Rotating Arbor Ground
- Aluminum or Stainless Toolbox
- Air Brakes w/ ABS
- 16" Long 6-Bolt Hitch Extension (w/ 52" Safety Chains and Breakaway Cable Extension)
- 3" Lunette Eye
- Wiring Connections Soldered and Sealed w/ Heat Shrink Tubing
- Plug-and-Play Sealco Wiring Harness

OPTIONS (cont.)

- **Wheel Chocks:** Rubber or All Weather Galvanized Grip Strut
- Spare Tire and Mount
- Solar Charged Breakaway Kit
- 12" Caster Wheel for Tongue Jack
- Strobe Warning Lights
- All Stainless Steel Fasteners (½" and under)
- Various Trailer Light Plugs (Customer Choice)
- Custom Paint
- Custom Specification
- Truck-Lite Lighting
- Lug Nut Indicators

8 7 6 5 4 3 2 1



<p>UNLESS OTHERWISE SPECIFIED: DIMENSIONS ARE IN INCHES TOLERANCE LIMITS ANGULAR ± 1.0° DRAWING IS THE SOLE PROPERTY OF REELSTRONG, INC. ANY REPRODUCTION OR TRANSMISSION OF THIS DRAWING WITHOUT PERMISSION OF REELSTRONG, INC. IS PROHIBITED.</p>		<p>REELSTRONG UTILITY FLEET <small>REELSTRONG, INC. 1000 WILSON ROAD WILSON, NJ 07094 V: 484-889-8248 F: 888-380-3932 info@reelstrongfleet.com</small></p>	
<p>TITLE: CL8</p>		<p>PART NO.: CL96-0000</p>	
<p>MATERIAL:</p>		<p>DATE: 7/16/2016</p>	
<p>FINISH:</p>		<p>SHEET 10 OF 10</p>	
<p>STROKE WEIGHT:</p>		<p>DRAWING NOT TO SCALE</p>	