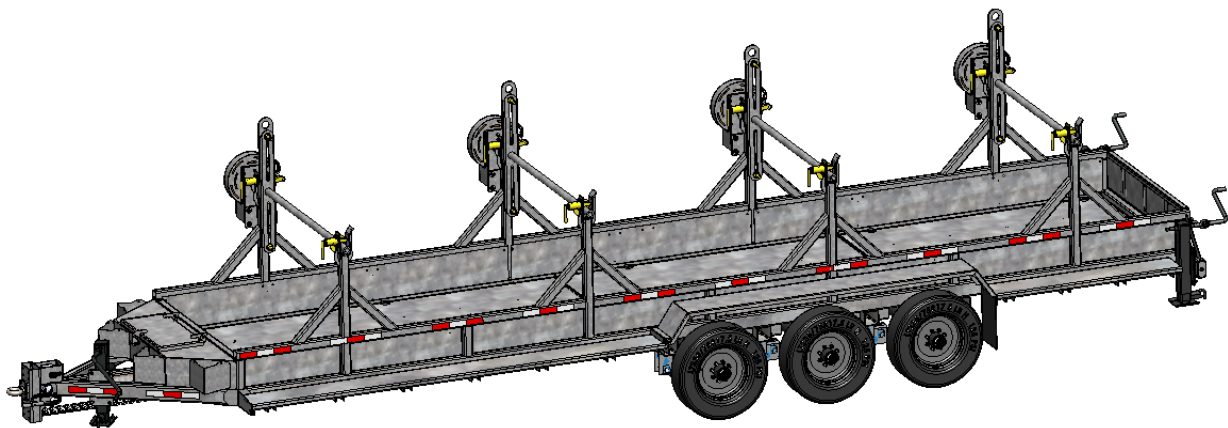


# **REELSTRONG®**

## **UTILITY FLEET**

### **MRST4-RC-84-60 POWERLOCK™ REEL / CARGO TRAILER SPECS**



#### **EXCLUSIVE STANDARD ADDED VALUE:**

- POWERLOCK™ Technology Provides Industry Leading Safety, Ease of Use, Low Maintenance and Durability.
  - SAFETY and Peace of Mind
  - No Pins, Cotters, or Lanyards that Secure the Reel Arbor (which is the most critical safety point).
  - Faster Reel Loading, Unloading, and Deployment Reduces Labor Costs and Fatigue on Workers.

***BUILT FOR SAFETY. BUILT FOR SPEED. BUILT TO LAST.***

**CAPACITIES:** 41,400 lbs. GVWR @ 15% Tongue Weight

**AXLES:** Triple 12K lbs. Sprung

**WHEELS:** (6) 17.5 x 6.75 HC / 8 on 6.5 BC w/ 0.19 Inset

**TIRES:** (6) ST-235/75R17.5 LR-J Tires

**BRAKES:** 12.25" x 5.00" Electric w/ Safety Breakaway Kit

**PAYLOAD: ALL FINAL PAYLOADS BASED ON CHOSEN MODEL AND OPTIONS**

**REEL / CARGO WEIGHT (PAYLOAD):** 31,600 lbs. (7,900 lbs. per Reel)

**REEL DIAMETER:** (4) 84" Maximum

**REEL WIDTH:** 60" Maximum

**REEL SHAFT DIAMETER:** 2.50" Tube w/ Centering Collars

**OVERALL LENGTH:** 406" Approx.

**OVERALL WIDTH:** 102"

**OVERALL WEIGHT:** 9,650 lbs. Approx. (Actual Trailer Weight will Vary with Options & Finishes Chosen)

### **STANDARD FEATURES**

- POWERLOCK™ Technology Provides Industry Leading Safety, Ease of Use, Low Maintenance and Durability.
- Oil Bath Hubs (Greaseable Option All)
- Electric Brakes
- Wheel Chock Holders

### **STANDARD TRAILER BODY**

- Heavy Duty 5" X 3" X ¼"
- 6-Position Adjustable Hitch
- ½" X 36" GR70 Yellow Zinc Safety Chains with Hooks
- 12,000 lbs. Static Front Jack w/ Spring Return
- Ground Lug: Copper Alloy Bolted to Frame
- Fenders: ⅛" Tread Plate
- Grip Strut Cat Walks
- Cargo Area: Approx. 66.5" Wide x 330.88" Long x 15" Tall
- Floor: ⅛" Steel Plate

## **STANDARD TRAILER BODY (cont.)**

- A-frame: 5' Long

## **WIRING**

- DOT / ICC Approved LED Lights and Conspicuity Reflective Tape
- FMVSS / CMVSS Standard 108 LED Lighting
- Sealed Beam, Rubber Mounted Stop, Turn, Tail and Marker Lights
- 100% Sealed Heat-Shrunked Wiring Connections w/ Full Loom
- Breakaway Kit with Absorbed Glass Mat (AGM) Battery

## **PAINT**

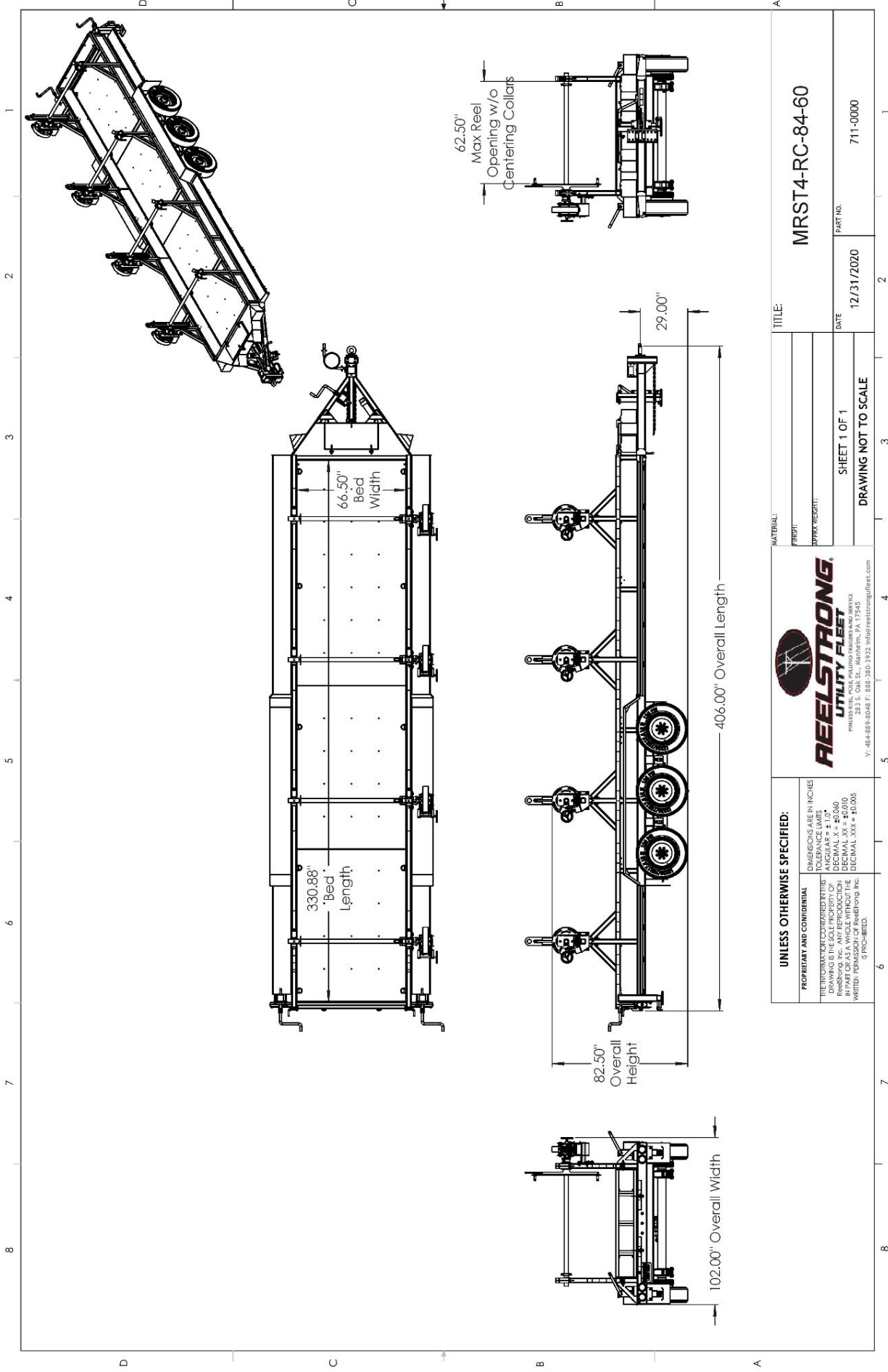
- Biodegradable Pretreat Acid Cleaning (Superior to re-used sandblasting material that can impregnate metals with oil)
- Seams Caulked
- Rust Preventative 2-Part Epoxy Primer
- Standard Colors: Red, Black, White and CAT Yellow

## **OPTIONS**

- 13 HP HONDA Engine Hydraulic Power Pack Comes STANDARD w/ ENGINE COVER, 15 Gallon Reservoir, Replaceable Oil Filter, Pressure Gauge and Solar Fade Resistant Plastic Control Placard. (Electric Start Optional)
- 10-Year Galvanized Structural Warranty (2-Year Painted)
- 3,300 or 4,800 ft/lbs Torque Hydraulic Take-up Retriever. (*Motor Spooled w/ Reel Brake ILO Cross-Over Relief Valve for Smooth Instant Reel Stoppage*)
- 2-7/16" Universal Adapter for Capstan and Power Reel Attachments
- 7 Inch General Purpose Capstan
- Collapsible Power Reel
- Rotating Arbor Ground
- Rewind Leveler
- 16" Bronze Alloy Ventilated Reel Brake w/ Ventilated Guard
- 16" Long 6-Bolt Hitch Extension (w/ 52" Safety Chains and Breakaway Cable Extension)
- 3" Lunette Eye
- Aluminum or Steel Toolbox
- 10K-HD / 15K / 20K Axles Available w/ Air Brakes
- Anti-Lock Brakes (ABS)
- Wiring Connections Soldered and Sealed w/ Heat Shrink Tubing
- Plug-and-Play Sealco Wiring Harness
- Wheel Chocks: Rubber or All Weather Galvanized Grip Strut
- Spare Tire and Mount
- Solar Charged Breakaway Kit
- Strobe Warning Lights
- All Stainless Steel Fasteners (1/2" and under)
- Hydraulic Front Jack
- Rear Underground Fairlead Roller Attachment (accommodates wooden plank rear gate)

**OPTIONS (cont.)**

- Truck-Lite Lighting
- Lug Nut Indicators



TITLE: MRST4-RC-84-60	
MATERIAL:	
FINISH:	
APPROX WEIGHT:	
DATE: 12/31/2020	PART NO: 711-0000
SHEET 1 OF 1	
DRAWING NOT TO SCALE	

UNLESS OTHERWISE SPECIFIED:  
 DIMENSIONS ARE IN INCHES  
 TOLERANCE LIMITS  
 DECIMAL .XX = ±0.06  
 DECIMAL .XXX = ±0.010  
 DECIMAL .XXXX = ±0.005  
 IS PROHIBITED.

**REELSTRONG**  
 UTILITY FLEET  
 283 S. Oak St., Mahanoh, PA 17545  
 V: 64-889-8048 F: 888-380-3932 info@reelstrongfleet.com