

REELSTRONG®

UTILITY FLEET

PL-2RT POWERLOCK™ REEL TRAILER SPECS



Shown w/ Wire Service Reel Option

LOWEST TOTAL COST OF OWNERSHIP (TCO) FROM:

- **LIFETIME WARRANTY PINLESS POWERLOCK™** Reel Bar Securement
- INDUSTRY LEADING 20" OVERSIZED TURRET BEARING
- 250K Axial, 90K ft/lbs Moment Load Lockable on 3 Degree Intervals
- OPEN TOP, "NON ENCAPSULATED" NYLATRON BEARING SADDLE (low-coefficient of friction). OPEN TOP = LESS FRICTION/LOW MAINTENANCE and EASIER PAY-OUT.
- No Pins or Cotters to Secure Reel Bar (*most critical safety point*)
- Yellow Zinc Electro-Plated and Stainless Precision Machined Components
- **PRACTICAL:** No Expensive, Unnecessary Bronze Components, yet we Don't Cut Corners and Provide Premium, Heavy Duty, Top-Quality Latches, Hardware, Fittings and Components.

BUILT FOR SAFETY. BUILT FOR SPEED. BUILT TO LAST.

CAPACITIES

- PL-2RT5: 18,400 lbs. GVWR @ 15% Tongue Weight
- PL-2RT7: 22,100 lbs. GVWR @ 15% Tongue Weight

AXLES

- PL-2RT5: Tandem 8K lbs. Torsion
- PL-2RT7: Tandem 10K lbs. Sprung

WHEELS

- PL-2RT5: (4) 17.5 x 6.75 HC / 8 on 6.5 BC w/ 0.19 Inset
- PL-2RT7: (4) 17.5 x 6.75 HC / 8 on 6.5 BC w/ 0.19 Inset

TIRES

- PL-2RT5: (4) ST-215/75R17.5 LR-H Tires
- PL-2RT7: (4) ST-215/75R17.5 LR-H Tires

BRAKES

- PL-2RT5: 12.25" x 3.38" Electric w/ Safety Breakaway Kit
- PL-2RT7: 12.25" x 3.38" Electric w/ Safety Breakaway Kit

PAYLOAD: ALL FINAL PAYLOADS BASED ON CHOSEN MODEL AND OPTIONS

REEL WEIGHT (PAYLOAD)

- PL-2RT5: 10,000 lbs. Approx. (5,000 lbs. Per Turret)
- PL-2RT7: 14,000 lbs. Approx. (7,000 lbs. Per Turret)

ALL REELS CLEAR EACH OTHER UPON ROTATION. COMPARE TO COMPETITION. SHORTER VERSION AVAILABLE

CURB WEIGHT:

- PL-2RT5: 5,850 lbs. Approx.
- PL-2RT7: 6,550 lbs. Approx.

Trailer Weight will Vary with Options & Finishes Chosen.

REEL DIA: (2) 72" Maximum

REEL WIDTH: 54" Maximum

REEL BAR DIA: 2.5"

LENGTH: 252" Approx

STANDARD FEATURES

- **PINLESS POWERLOCK™ LIFETIME WARRANTY**
VIRTUALLY ZERO MAINTENANCE Yellow Zinc Electroplated
- **INDUSTRY LEADING 20" OVERSIZED TURRET BEARING w/**
250K Axial, 90K ft/lbs Moment Load Lockable on 3 Deg. Intervals
- **OPEN TOP, "NON ENCAPSULATED" NYLATRON BEARING SADDLE**
(low-coefficient of friction). OPEN TOP = LESS FRICTION/LOW MAINTENANCE and EASIER PAY-OUT. (Haven't Replaced a Saddle in 14 Years)
- Oil Bath Hubs (Greaseable Option All)
- Electric Brakes
- Wheel Chock Holders
- Removable Turrets to Turn Trailer into Flatbed, if Needed.
- **Three (3) POINT STEPS AND HANDHOLDS STANDARD**

STANDARD TRAILER BODY

- 8" X 4" X ¼" Frame
- 6-Position Adjustable Hitch
- ½" X 36" GR70 Yellow Zinc Safety Chains with Hooks
- 12,000 lbs. Static Front Jack w/ Spring Return
- (2) Rear 8,000 lbs. Static Stabilizer Jacks w/ Spring Return
- Ground Lug: Copper Alloy Star Washer Bolted to Frame (Welded Optional)
- Fenders: ⅛" Fabricated Diamond Plate

WIRING

- DOT / ICC-- FMVSS / CMVSS Approved LED ULTRA- HIGH VISIBILITY 180 DEGREE BULLET Marker and Clearance Lights
- LED Sealed Beam Rubber Mounted Stop, Turn, Tail and Marker Lights
- Breakaway Kit with Absorbed Glass Mat (AGM) Battery
- 100% Sealed Heat-Shrunked Wiring Connections w/ Full Loom
- FULLY PROTECTED 7 or 6 Way Female Plug acts as Junction Box Recessed in FRAME RAIL. No Easily Damaged Plastic Junction Boxes

PAINT

- Biodegradable Pretreat Acid Cleaning
(Superior to re-used sandblasting material that can impregnate metals with oil)
- Seams Caulked
- Rust Preventative 2-Part Epoxy Primer
- Two-Part Polyurethane Topcoats (2 topcoats)
- Standard Colors: White and CAT Yellow (Custom Available)

OPTIONS

- 13 HP HONDA Engine Hydraulic Power Pack Comes STANDARD w/ ENGINE COVER, 15 Gallon Reservoir, Replaceable Oil Filter, Pressure Gauge and Solar Fade Resistant Plastic Control Placard. (Electric Start Optional)
- Ten (10) Year Galvanized Structural Warranty (2-Year Painted)
- Spare Tire and Mount
- 3,300 ft/lbs Torque Hydraulic Take-up Retriever. (Motor Spooled w/ Reel Brake ILO Cross-Over Relief Valve for Smooth Instant Reel Stoppage)
- 2-7/16" Universal Adapter for Capstan and Power Reel Attachments
- Hydraulic Hose Rotary Swivel Union (*manages & eliminates loose hydraulic hoses*)
- 7 Inch General Purpose Capstan
- Collapsible Power Reel
- Rotating Arbor Ground
- 16" Bronze Alloy Ventilated Reel Brake w/ Ventilated Guard
- 16" Long 6-Bolt Hitch Extension (w/ 52" Safety Chains and Breakaway Cable Extension)
- 3" Lunette Eye
- All Stainless Steel Fasteners (1/2" and under)
- Anti-Skid/Anti-Glare Sand Paint on all Walking Surfaces
- Various Trailer Light Plugs (Customer Choice)
- Aluminum or Steel Toolbox
- Air Brakes w/ ABS
- Wiring Connections Soldered and Sealed w/ Heat Shrink Tubing
- Plug-and-Play Sealco Wiring Harness
- Wheel Chocks: Rubber or All Weather Galvanized Grip Strut
- Solar Charged Breakaway Kit
- Strobe Warning Lights
- Hydraulic Front Jack
- Hydraulic Rear and Intermediate Outriggers
- Telescoping Rear and Intermediate Outriggers
- Truck-Lite Lighting
- Lug Nut Indicators

OPTIONAL PREMIUM ROLLER PACKAGE

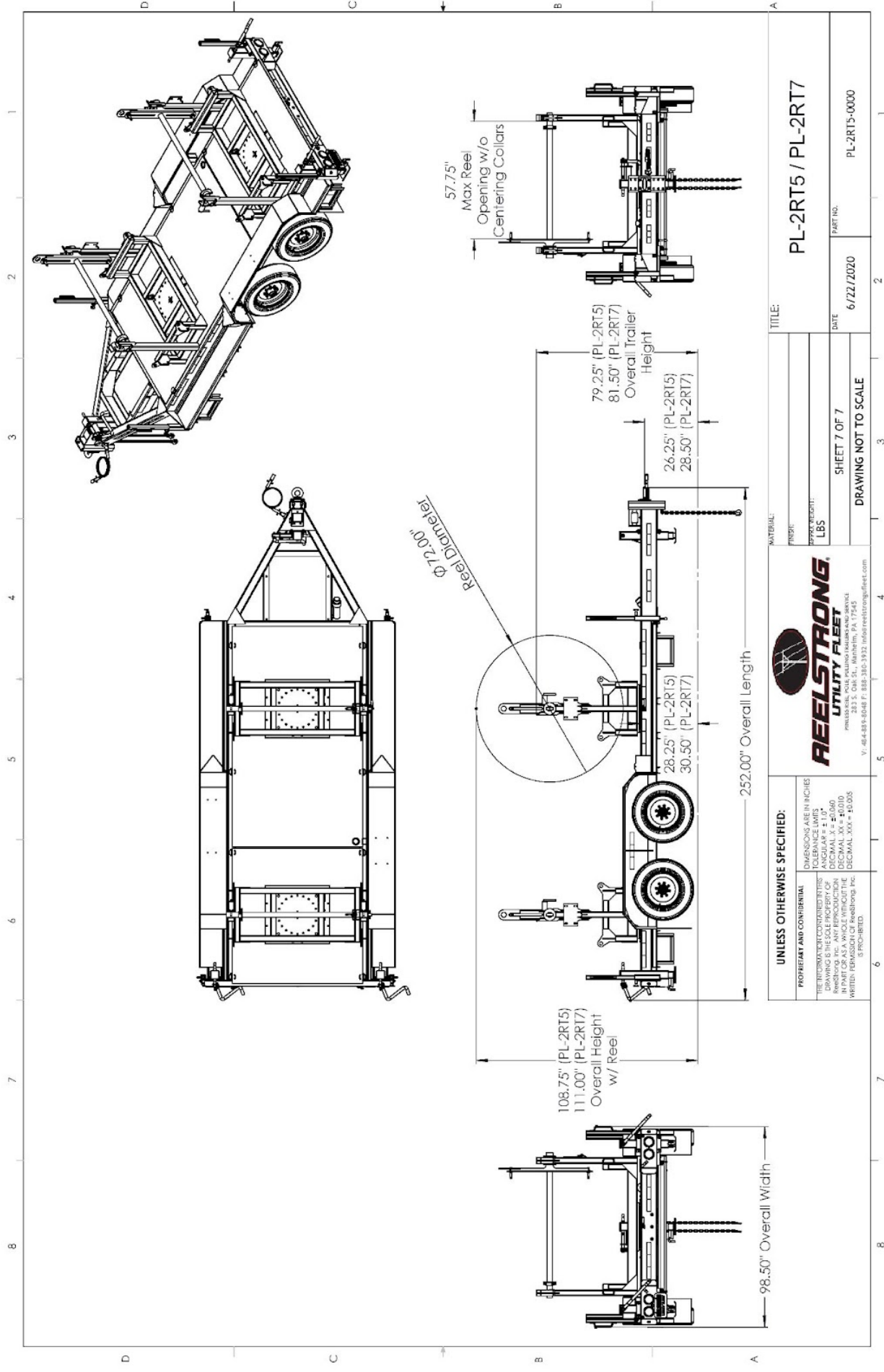
- OVD Fairlead Rollers (One "1" Per Turret)
- URD Fairlead Rollers (Two "2" Per Turret)
- OVD/URD Cable Gathering Windows

OPTIONAL PREMIUM ROLLER PACKAGE (cont.)

- URD Arching/Traversing Fairlead

OPTIONAL ECONOMY ROLLER PACKAGE

- OVD Fairlead Rollers (One “1” Per Turret)
- URD Fairlead Rollers (Two “2” Per Turret)
- OVD/URD Cable Gathering Windows
- URD Cable Gathering Window



UNLESS OTHERWISE SPECIFIED: DIMENSIONS ARE IN INCHES TOLERANCE LIMITS: DECIMAL .0005 FRACTIONAL 1/32"		REELSTRONG UTILITY FLEET 283 S. Oak St., Warminster, PA 17245 V: 484-889-8048 F: 888-380-3932 info@reelstrongfleet.com	
PROPRIETARY AND CONFIDENTIAL THE INFORMATION CONTAINED HEREIN IS THE SOLE PROPERTY OF REELSTRONG UTILITY FLEET. NO PART OF THIS DRAWING IS TO BE REPRODUCED, COPIED, OR TRANSMITTED IN ANY FORM OR BY ANY MEANS, WITHOUT THE WRITTEN PERMISSION OF Reelstrong Inc. © 2020. ALL RIGHTS RESERVED.		TITLE: PL-2RT15 / PL-2RT17 SHEET 7 OF 7 DRAWING NOT TO SCALE	
MATERIAL: LBS FINISH:		DATE: 6/22/2020 PART NO.: PL-2RT15-0000	