

REELSTRONG

UTILITY FLEET

SL24-34 SLIDELOCK™ REEL TRAILER SPECS



EXCLUSIVE STANDARD ADDED VALUE:

- SLIDELOCK™ Technology Provides Industry Leading Safety, Ease of Use, Low Maintenance and Durability.
 - SAFETY and Peace of Mind
 - No Pins, Cotters, or Lanyards that Secure the Reel Arbor (which is the most critical safety point).
 - Faster Reel Loading, Unloading, and Deployment Reduces Labor Costs and Fatigue on Workers.

BUILT FOR SAFETY. BUILT FOR SPEED. BUILT TO LAST.

CAPACITIES: 27,600 lbs. GVWR @ 15% Tongue Weight

AXLES: Tandem 12K lbs. Sprung

WHEELS: (4) 17.5 x 6.75 HC / 8 on 6.5 BC w/ 0.19 Inset

TIRES: (4) 235/75R17.5 LR-H Tires

BRAKES: 12.25" x 5.00" Electric w/ Safety Breakaway Kit

PAYLOAD: ALL FINAL PAYLOADS BASED ON CHOSEN MODEL AND OPTIONS

REEL CAPACITY:

(3x) 120" Diameter x 62" Width x 6,500 lbs.

or

(4x) 96" Diameter x 62" Width x 4,900 lbs.

REEL SHAFT DIAMETER: 2.50" Tube w/ Centering Collars

OVERALL LENGTH: 466.75"

OVERALL WIDTH: 100.75"

OVERALL WEIGHT: 8,000 lbs. Approx.

(Actual Trailer Weight will Vary with Options & Finishes Chosen)

STANDARD FEATURES

- SLIDELOCK Technology Provides Industry Leading Safety, Ease of Use, Low Maintenance and Durability.
- Oil Bath Hubs (Greaseable Option All)
- Electric Brakes
- Wheel Chock Holders

STANDARD TRAILER BODY

- Heavy Duty 6" X 3" X ¼"
- 6-Position Adjustable Hitch
- ½" X 36" GR70 Yellow Zinc Safety Chains with Hooks
- 12,000 lbs. Static Front Jack w/ Spring Return
- Ground Lug: Copper Alloy Bolted to Frame
- Fenders: ⅛" Tread Plate
- A-frame: Approx. 6' Long
- Grip Strut Catwalks

WIRING

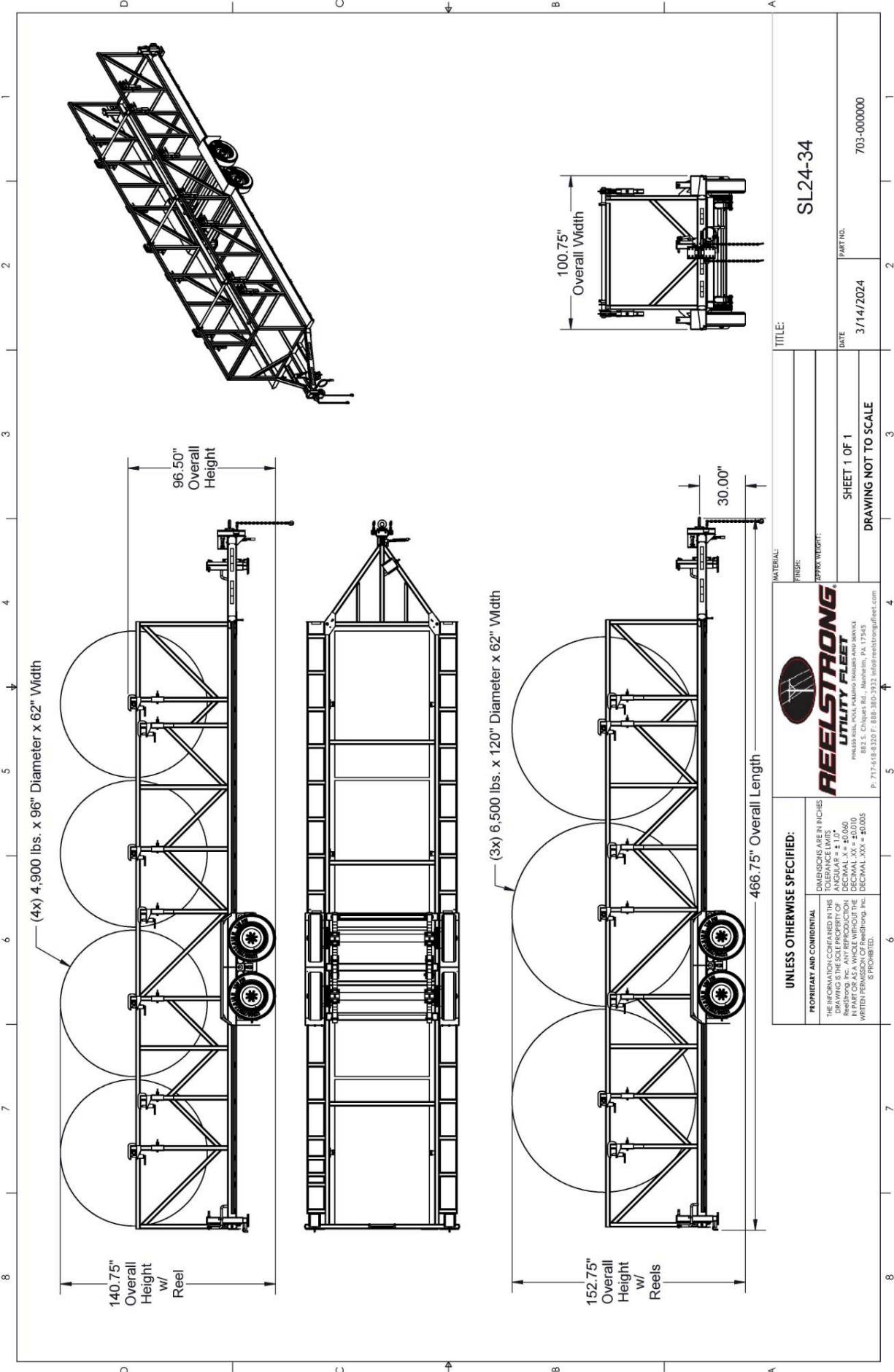
- DOT / ICC Approved LED Lights and Conspicuity Reflective Tape
- FMVSS / CMVSS Standard 108 LED Lighting
- Sealed Beam, Rubber Mounted Stop, Turn, Tail and Marker Lights
- 100% Sealed Heat-Shrunked Wiring Connections w/ Full Loom
- Breakaway Kit with Absorbed Glass Mat (AGM) Battery

PAINT

- Biodegradable Pretreat Acid Cleaning
(Superior to re-used sandblasting material that can impregnate metals with oil)
- Seams Caulked
- Rust Preventative 2-Part Epoxy Primer
- Standard Colors: Red, Black, White and CAT Yellow

OPTIONS

- 10-Year Galvanized Structural Warranty (2-Year Painted)
- 16" Long 6-Bolt Hitch Extension (w/ 52" Safety Chains and Breakaway Cable Extension)
- Aluminum or Steel Toolbox
- Wiring Connections Soldered and Sealed w/ Heat Shrink Tubing
- Plug-and-Play Sealco Wiring Harness
- Wheel Chocks: Rubber or All Weather Galvanized Grip Strut
- Spare Tire and Mount
- Solar Charged Breakaway Kit
- Strobe Warning Lights
- All Stainless Steel Fasteners (1/2" and under)
- Truck-Lite Lighting
- Lug Nut Indicators



UNLESS OTHERWISE SPECIFIED:		<p>REELSTRONG UTILITY FLEET 882 S. Chiques Rd., Mahanaim, PA 17545 P: 717-618-8320 F: 888-380-3932 info@reelstrongfleet.com</p>	
THE INFORMATION CONTAINED IN THIS DRAWING IS THE SOLE PROPERTY OF REELSTRONG, INC. ANY REPRODUCTION OR TRANSMISSION OF THIS DRAWING WITHOUT THE WRITTEN PERMISSION OF REELSTRONG, INC. IS PROHIBITED.		DIMENSIONS ARE IN INCHES TOLERANCE LIMITS: ANGULAR = ± 1.0° DECIMAL = ± 0.015 DECIMAL XX = ± 0.010 DECIMAL XXX = ± 0.005	
MATERIAL:		TITLE: SL24-34	
FIGURE:		DATE: 3/14/2024	
DRAWING WEIGHT:		PART NO.: 703-000000	
SHEET 1 OF 1		DRAWING NOT TO SCALE	