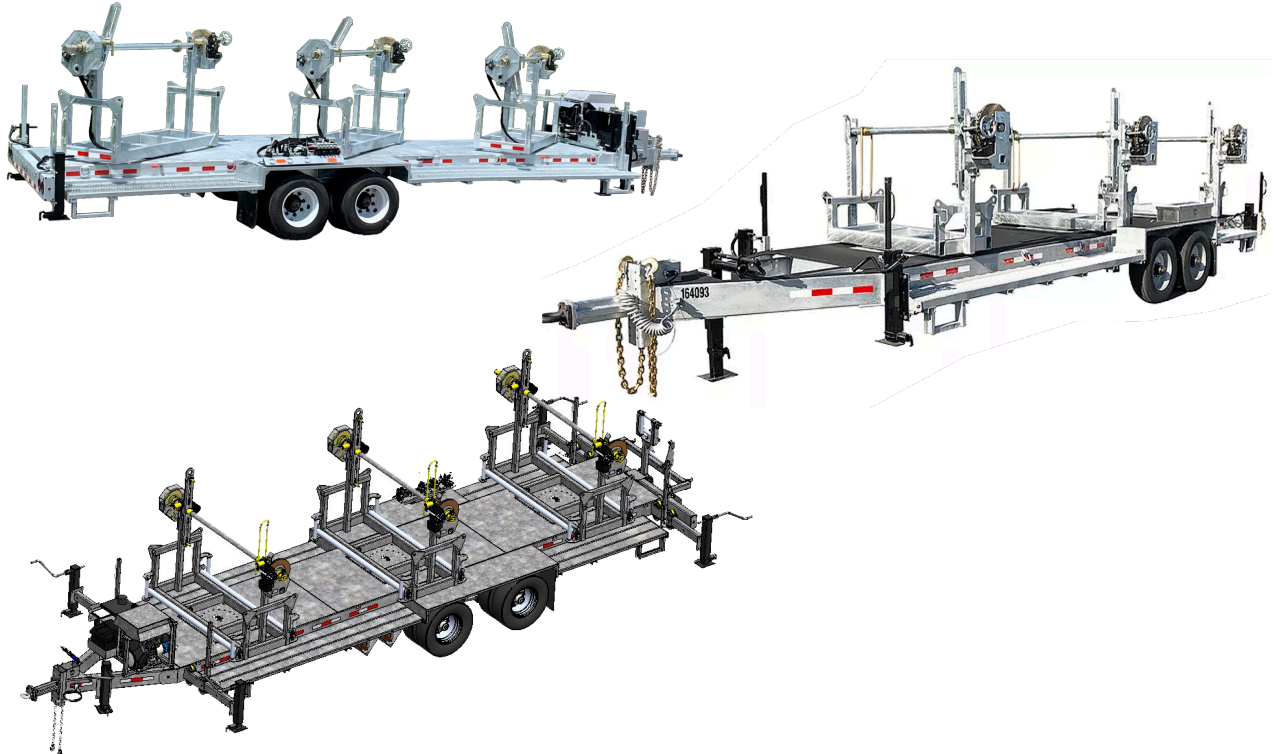


REELSTRONG®

UTILITY FLEET

PL-3RT POWERLOCK™ REEL TRAILER SPECS



LOWEST TOTAL COST OF OWNERSHIP (TCO) FROM:

- **LIFETIME WARRANTY PINLESS POWERLOCK™** Reel Bar Securement
- **INDUSTRY LEADING 20" OVERSIZED TURRET BEARING**
 - 250K Axial, 90K ft/lbs Moment Load Lockable on 3 Degree Intervals
- **INDUSTRY LEADING 24" OVERSIZED TURRET BEARING (PL-3RT10)**
 - Lockable on 3 Degree Intervals
- **OPEN TOP, "NON ENCAPSULATED" NYLATRON BEARING SADDLE** (low-coefficient of friction). **OPEN TOP = LESS FRICTION/LOW MAINTENANCE and EASIER PAY-OUT.**
- **No Pins or Cotters to Secure Reel Bar** (*most critical safety point*)
- **Yellow Zinc Electro-Plated and Stainless Precision Machined Components**
- **PRACTICAL:** No Expensive, Unnecessary Bronze Components, yet we Don't Cut Corners and Provide Premium, Heavy Duty, Top-Quality Latches, Hardware, Fittings and Components.

BUILT FOR SAFETY. BUILT FOR SPEED. BUILT TO LAST.

CAPACITIES

- PL-3RT5: 27,600 lbs. GVWR @ 15% Tongue Weight
- PL-3RT7: 34,500 lbs. GVWR @ 15% Tongue Weight
- PL-3RT8: 51,750 lbs. GVWR @ 15% Tongue Weight
- PL-3RT10: 51,750 lbs. GVWR @ 15% Tongue Weight

AXLES

- PL-3RT5: Tandem 12K Sprung
- PL-3RT7: Tandem-Dual 15K Sprung
- PL-3RT8: Tandem-Dual 22.5K Sprung **AIR BRAKES REQUIRED**
- PL-3RT10: Tri-Dual 15K Sprung

WHEELS

- PL-3RT5: (4) 17.5 x 6.75 HC / 8 on 6.5 BC w/ 0.19 Inset
- PL-3RT7: (8) 17.5 x 6.75 HC / 8 on 275mm BC w/ 5.60 Outset
- PL-3RT8: (8) 17.5 x 6.75 HC / 8 on 275mm BC w/ 5.60 Outset
- PL-3RT10: (8) 17.5 x 6.75 HC / 8 on 275mm BC w/ 5.60 Outset

TIRES

- PL-3RT5: (4) ST-235/75R17.5 LR-H Tires
- PL-3RT7: (8) ST-215/75R17.5 LR-H Tires
- PL-3RT8: (8) ST-235/75R17.5 16PR Tires
- PL-3RT10: (8) ST-215/75R17.5 LR-H Tires

BRAKES

- PL-3RT5: 12.25" x 5.00" Electric
- PL-3RT7: 12.25" x 5.00" Electric
- PL-3RT8: 12.25" x 7.50" **AIR BRAKES REQUIRED**
- PL-3RT10: 12.25" x 5.00" Electric

PAYLOAD: ALL FINAL PAYLOADS BASED ON CHOSEN MODEL AND OPTIONS

REEL WEIGHT (PAYLOAD)

- PL-3RT5: 15,000 lbs. Approx. (5,000 lbs. Per Turret)
- PL-3RT7: 21,000 lbs. Approx. (7,000 lbs. Per Turret)
- PL-3RT8: 24,000 lbs. Approx. (8,000 lbs. Per Turret)
- PL-3RT10: 30,000 lbs. Approx. (10,000 lbs. Per Turret)

EXTRA PAYLOAD FOR CARGO AVAILABLE UPON REQUEST

REEL DIA

- PL-3RT5: 72" Max
- PL-3RT7: 84" Max
- PL-3RT8: 84" Max

REEL DIA (Cont)

- PL-3RT10: 84" Max

CUSTOMIZABLE TO 90"- 96" DIAMETER

REEL WIDTH

- PL-3RT5: 54" Max
- PL-3RT7: 60" Max
- PL-3RT8: 60" Max
- PL-3RT10: 60" Max

REEL BAR DIA

- PL-3RT5: 2.5"
- PL-3RT7: 2.5"
- PL-3RT8: 2.5"
- PL-3RT10: 3.0"

ALL FINAL LENGTHS, WIDTHS, AND WEIGHTS ARE BASED ON CHOSEN MODEL AND OPTIONS

OVERALL LENGTH

- PL-3RT5: 364.75" Approx.
- PL-3RT7: 393.75" Approx.
- PL-3RT8: 393.75" Approx.
- PL-3RT10: 421.75" Approx.

ALL REELS CLEAR EACH OTHER UPON ROTATION. COMPARE TO COMPETITION. SHORTER VERSIONS AVAILABLE

WIDTH

- PL-3RT5: 96.75" Approx.
- PL-3RT7: 96.25" Approx.
- PL-3RT8: 96.25" Approx.
- PL-3RT10: 99.25" Approx.

CURB WEIGHT:

- PL-3RT5: 9,950 lbs. Approx.
- PL-3RT7: 10,950 lbs. Approx.
- PL-3RT8: 12,600 lbs. Approx.
- PL-3RT10: 14,850 lbs. Approx.

STANDARD FEATURES

- **PINLESS POWERLOCK™ LIFETIME WARRANTY**
VIRTUALLY ZERO MAINTENANCE Yellow Zinc Electroplated
- **INDUSTRY LEADING 20" OVERSIZED TURRET BEARING w/**
250K Axial, 90K ft/lbs Moment Load Lockable on 3 Deg. Intervals
- **OPEN TOP, "NON ENCAPSULATED" NYLATRON BEARING SADDLE**
(low-coefficient of friction). OPEN TOP = LESS FRICTION/LOW MAINTENANCE and EASIER PAY-OUT. (Haven't Replaced a Saddle in 14 Years)
- Oil Bath Hubs (Greaseable Option All)
- Electric Brakes
- Wheel Chock Holders
- Removable Turrets to Turn Trailer into Flatbed, if Needed.
- **Three (3) POINT STEPS AND HANDHOLDS STANDARD**

STANDARD TRAILER BODY

- Heavy Duty 10" X 3" X ¼" Frame
- 8-Position Adjustable Hitch
- ½" X 36" GR70 Yellow Zinc Safety Chains with Hooks
- 12,000 lbs. Static Front Jack w/ Spring Return
- Ground Lug: Copper Alloy Star Washer Bolted to Frame (Welded Optional)
- Fenders: ⅛" Fabricated Diamond Plate
- (2) Intermediate 12,000 lbs. Static Stabilizer Jacks
- (2) Rear 12,000 lbs. Static Stabilizer Jacks

WIRING

- DOT / ICC-- FMVSS / CMVSS Approved LED ULTRA- HIGH VISIBILITY 180 DEGREE BULLET Marker and Clearance Lights
- LED Sealed Beam Rubber Mounted Stop, Turn, Tail and Marker Lights
- Breakaway Kit with Absorbed Glass Mat (AGM) Battery
- 100% Sealed Heat-Shrunked Wiring Connections w/ Full Loom
- FULLY PROTECTED 7 or 6 Way Female Plug acts as Junction Box Recessed in FRAME RAIL. No Easily Damaged Plastic Junction Boxes

PAINT

- Biodegradable Pretreat Acid Cleaning
(Superior to re-used sandblasting material that can impregnate metals with oil)
- Seams Caulked
- Rust Preventative 2-Part Epoxy Primer
- Two-Part Polyurethane Topcoats (2 topcoats)
- Standard Colors: White and CAT Yellow (Custom Available)

OPTIONS

- 13 HP HONDA Engine Hydraulic Power Pack Comes STANDARD w/ ENGINE COVER, 15 Gallon Reservoir, Replaceable Oil Filter, Pressure Gauge and Solar Fade Resistant Plastic Control Placard. (Electric Start Optional)
- 21 HP HONDA Engine Hydraulic Power Pack Comes STANDARD w/ ENGINE COVER, Electric Start, 25 Gallon Reservoir, Oil Cooler, Replaceable Oil Filter, Pressure Gauge and Solar Fade Resistant Plastic Control Placard.
- 35 HP Vanguard Engine Hydraulic Power Pack Comes STANDARD w/ ENGINE COVER, Electric Start, 25 Gallon Reservoir, Oil Cooler, Triple Port Hydraulic Pump, Central Valve Bank w/ Separate Fine Metering Flow Control Valves, Replaceable Oil Filter, Pressure Gauge and Solar Fade Resistant Plastic Control Placard.
- Tier 4 Diesel Engine Hydraulic Power Pack Comes STANDARD w/ ENGINE COVER, Electric Start, 25 Gallon Reservoir, Oil Cooler, Triple Port Hydraulic Pump, Central Valve Bank w/ Separate Fine Metering Flow Control Valves, Replaceable Oil Filter, Pressure Gauge and Solar Fade Resistant Plastic Control Placard.
- Ten (10) Year Galvanized Structural Warranty (2-Year Painted)
- All Stainless Steel Fasteners (1/2" and under)
- 3" Lunette Eye
- Aluminum Engine Cover
- 3,300 ft/lbs Torque Hydraulic Take-up Retriever. (Motor Spooled w/ Reel Brake ILO Cross-Over Relief Valve for Smooth Instant Reel Stoppage)
- 2-7/16" Universal Adapter for Capstan and Power Reel Attachments
- Hydraulic Hose Rotary Swivel Union (*manages & eliminates loose hydraulic hoses*)
- 7 Inch General Purpose Capstan
- Collapsible Power Reel
- Rotating Arbor Ground
- 16" Bronze Alloy Ventilated Reel Brake w/ Ventilated Guard
- 16" Long 6-Bolt Hitch Extension (w/ 52" Safety Chains and Breakaway Cable Extension)
- Anti-Skid/Anti-Glare Sand Paint on all Walking Surfaces
- Various Trailer Light Plugs (Customer Choice)
- Aluminum or Steel Toolbox
- Air Brakes w/ ABS
- Wiring Connections Soldered and Sealed w/ Heat Shrink Tubing
- Plug-and-Play Sealco Wiring Harness
- Wheel Chocks: Rubber or All Weather Galvanized Grip Strut
- Spare Tire and Mount
- Solar Charged Breakaway Kit
- Strobe Warning Lights
- Hydraulic Front Jack
- Hydraulic Rear and Intermediate Outriggers
- Telescoping Rear and Intermediate Outriggers
- OVD Fairlead Rollers (One "1" Per Turret)

OPTIONS (cont.)

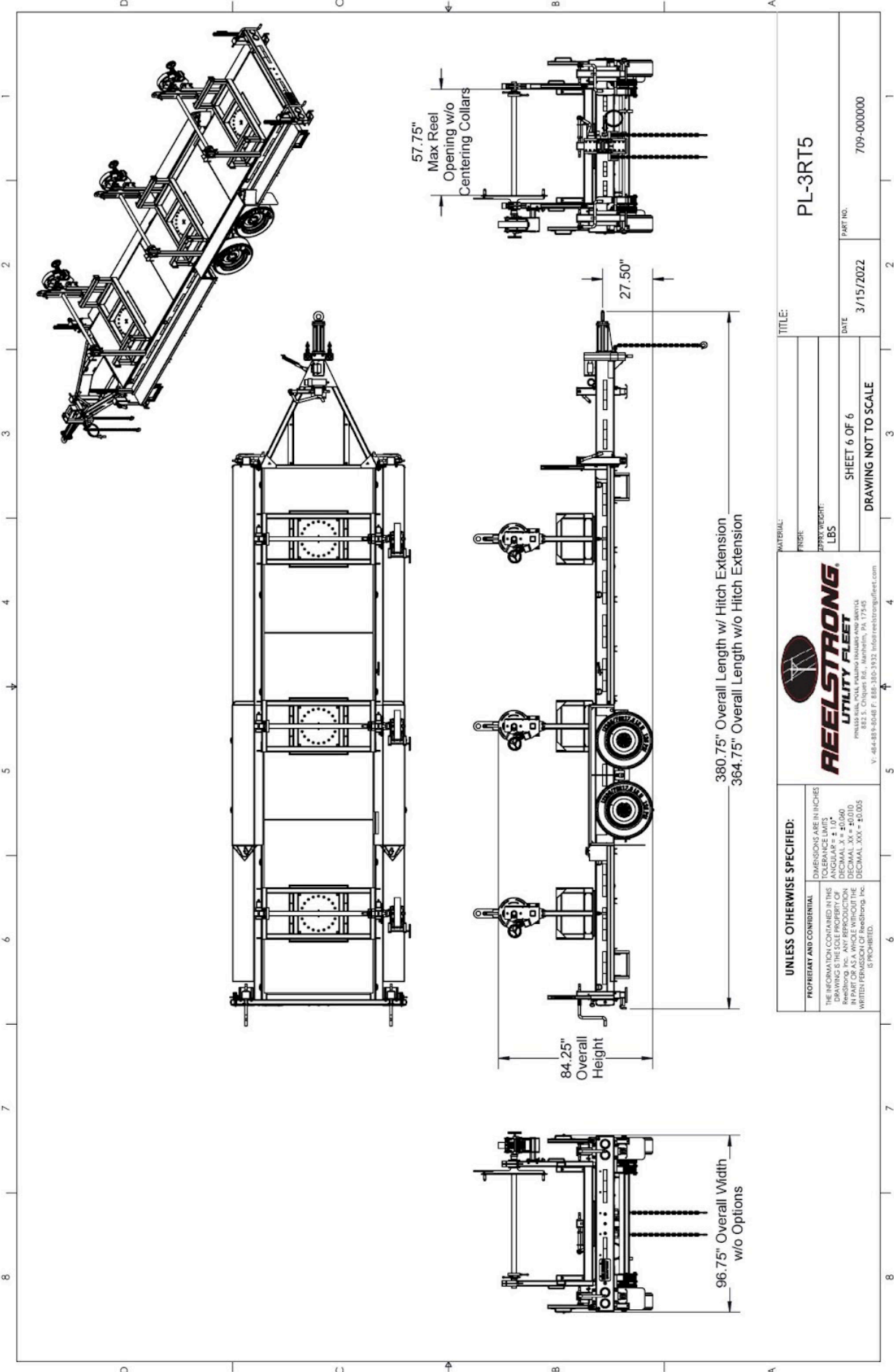
- URD Fairlead Rollers (Two “2” Per Turret)
- OVD/URD Cable Gathering Windows
- Arching URD Cable Gathering Window
- Economy URD Cable Gathering Window
- Truck-Lite Lighting
- Lug Nut Indicators

OPTIONAL PREMIUM ROLLER PACKAGE

- OVD Fairlead Rollers (One “1” Per Turret)
- URD Fairlead Rollers (Two “2” Per Turret)
- OVD/URD Cable Gathering Windows
- URD Arching/Traversing Fairlead

OPTIONAL ECONOMY ROLLER PACKAGE

- OVD Fairlead Rollers (One “1” Per Turret)
- URD Fairlead Rollers (Two “2” Per Turret)
- OVD/URD Cable Gathering Windows
- URD Cable Gathering Window



TITLE:		PL-3RT5
MATERIAL:	FRISK:	
	MAX WEIGHT:	LBS
DATE:		3/15/2022
PART NO.:		709-000000

SHEET 6 OF 6	
DRAWING NOT TO SCALE	

REELSTRONG
UTILITY FLEET

822 S. Chiquet St., Mahan, PA, 17240
V: 484-889-8048 F: 888-380-3932 info@reelstrongfleet.com

UNLESS OTHERWISE SPECIFIED:

PROPRIETARY AND CONFIDENTIAL

THE INFORMATION CONTAINED IN THIS DRAWING IS THE SOLE PROPERTY OF REELSTRONG, INC. ANY REUSE OR REPRODUCTION IN PART OR AS A WHOLE WITHOUT THE WRITTEN PERMISSION OF REELSTRONG, INC. IS PROHIBITED.

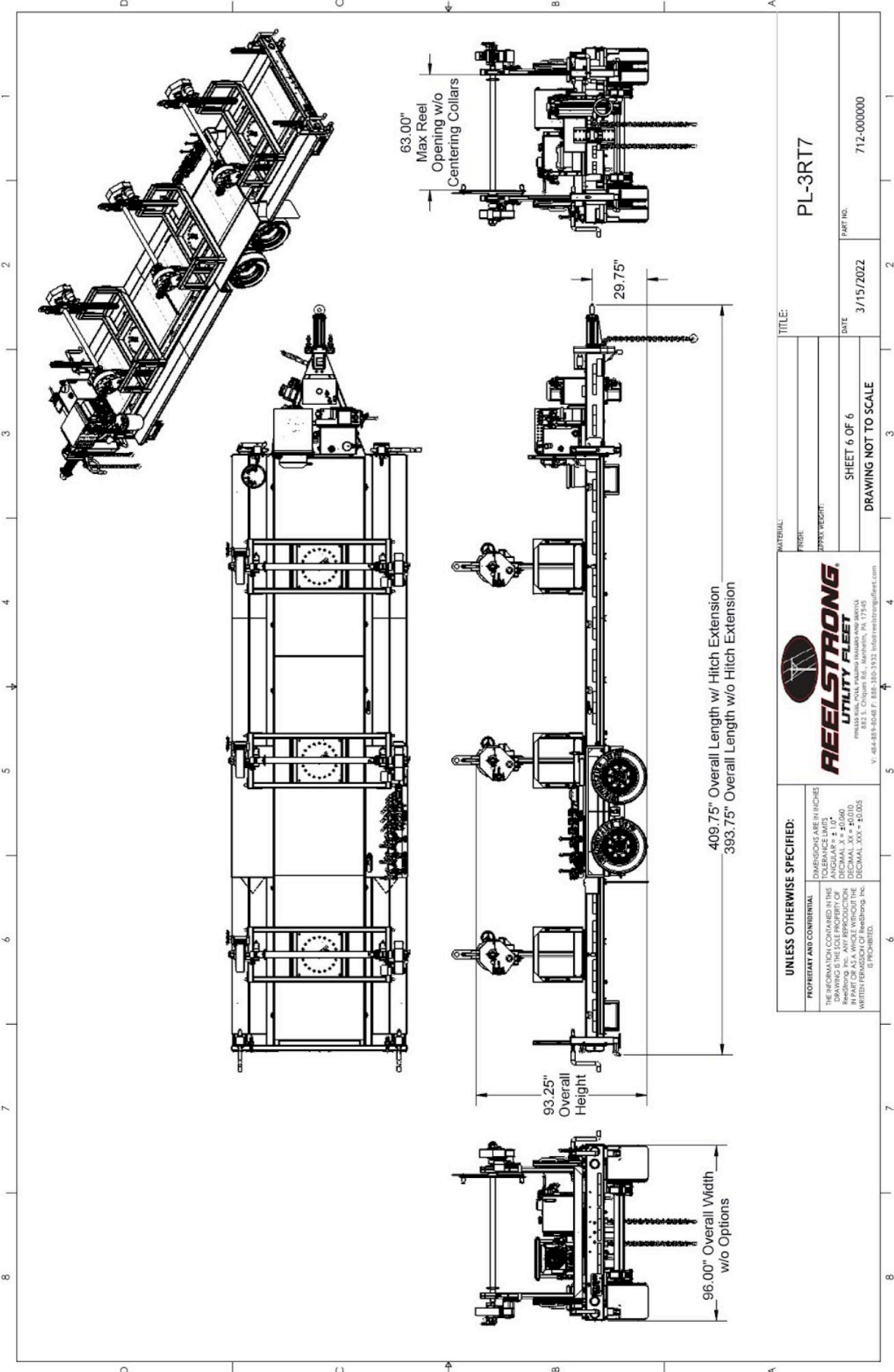
DIMENSIONS ARE IN INCHES

TOLERANCE LIMITS:

FRACTIONS: ±0.005

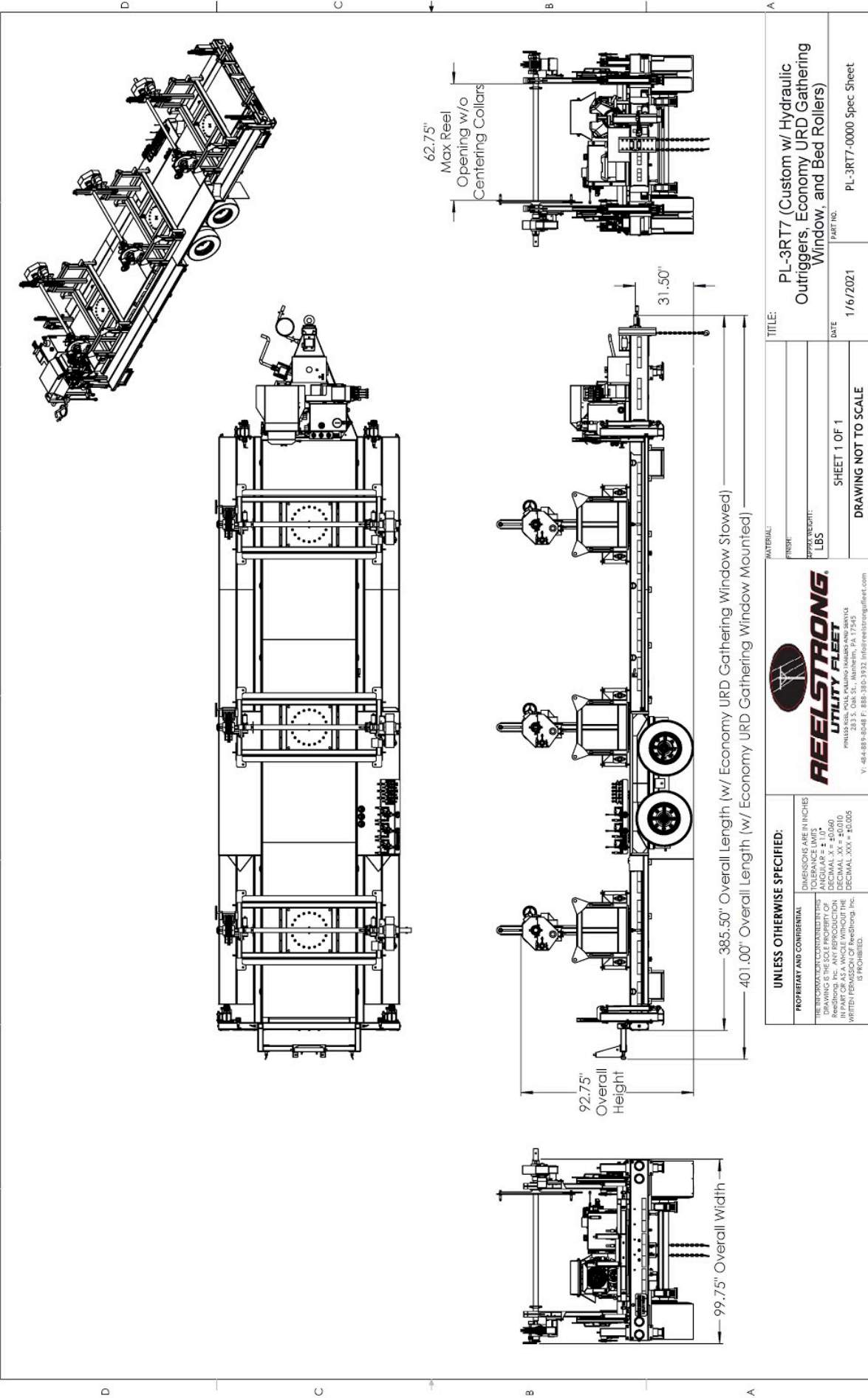
DECIMAL: .XX = ±0.010

DECIMAL: .XXX = ±0.005



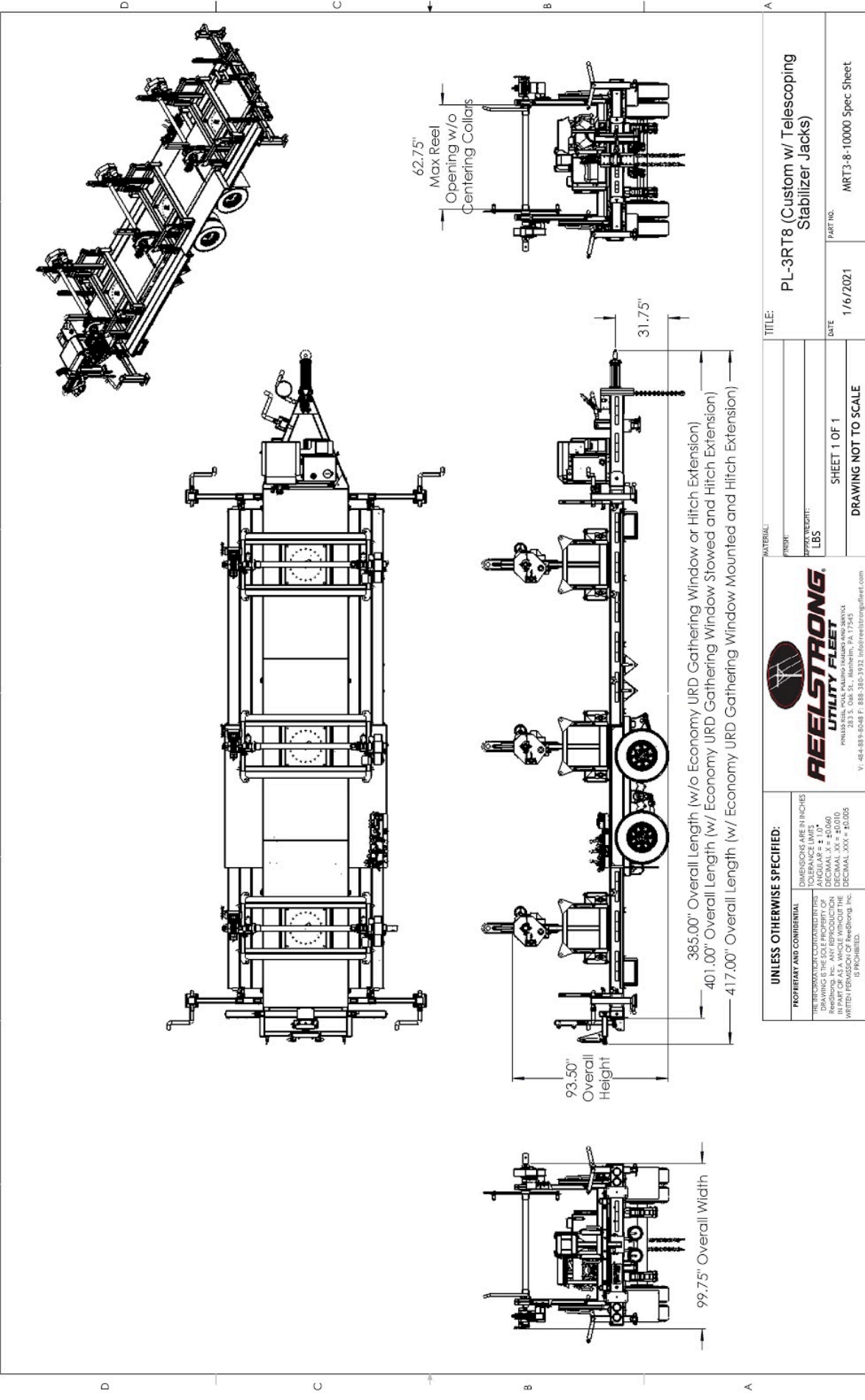
UNLESS OTHERWISE SPECIFIED: DIMENSIONS ARE IN INCHES TOLERANCE LIMITS: FRACTIONS: ±0.005 DECIMAL: ±0.010 DECIMAL: .XX ±0.010 DECIMAL: .XXX ±0.005 DECIMAL: .XXX ±0.005 IS PROHIBITED.		REELSTRONG UTILITY FLEET 822 S. Chiquet St., Mahan, PA 17240 V: 484-889-8048 F: 888-380-3932 info@reelstrong.com	
PROPRIETARY AND CONFIDENTIAL THE INFORMATION CONTAINED IN THIS DRAWING IS THE SOLE PROPERTY OF REELSTRONG, INC. ANY REUSE OR REPRODUCTION IN PART OR AS A WHOLE WITHOUT THE WRITTEN PERMISSION OF REELSTRONG, INC. IS PROHIBITED.		TITLE: PL-3RT7 MATERIAL: _____ FINISH: _____ APPROX WEIGHT: _____	
SHEET 6 OF 6 DRAWING NOT TO SCALE		PART NO. 712-000000 DATE 3/15/2022	

8 7 6 5 4 3 2 1



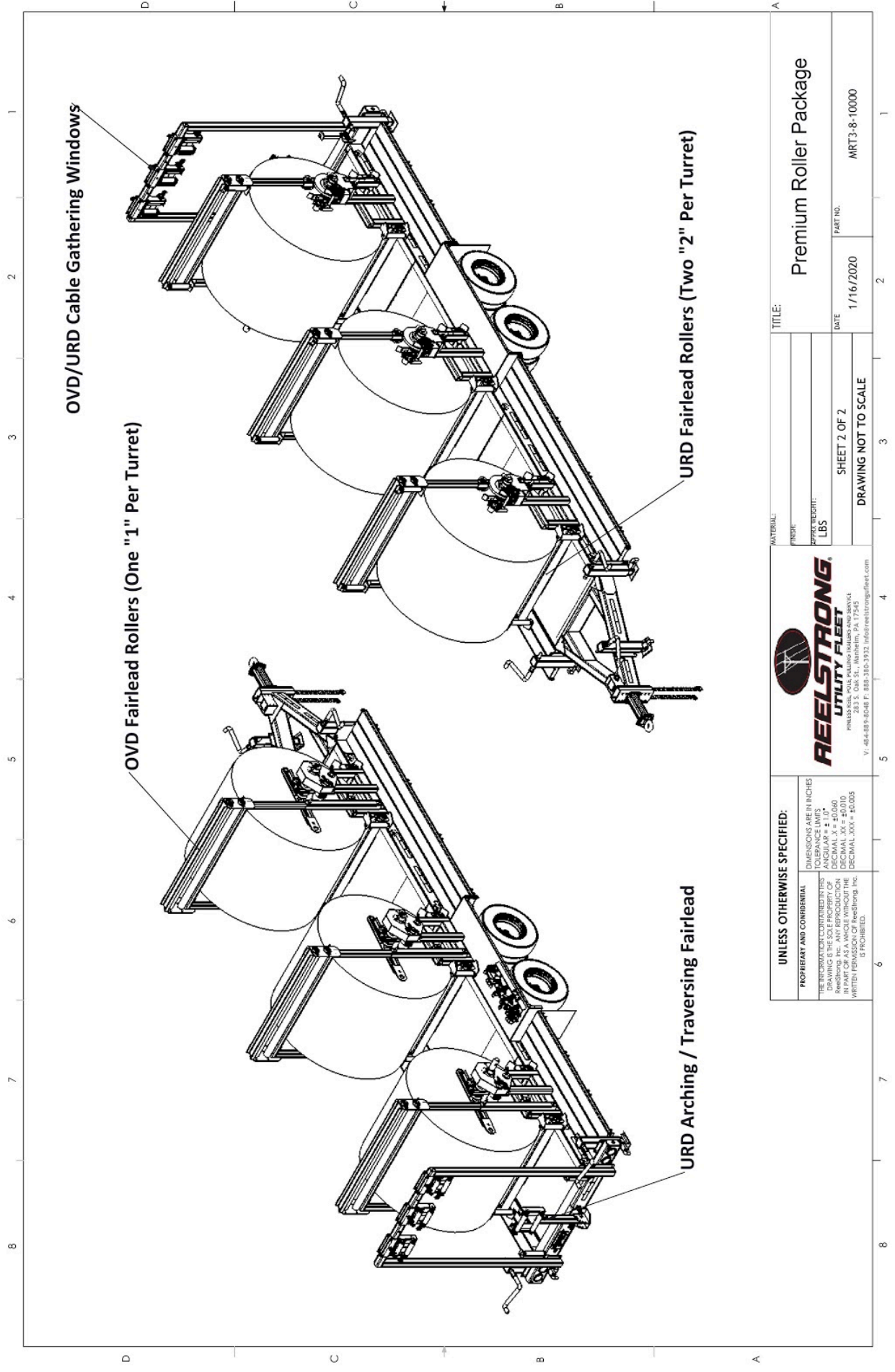
UNLESS OTHERWISE SPECIFIED: DIMENSIONS ARE IN INCHES TOLERANCE LIMITS ANGULAR ± 1.0° DECIMAL ± 0.005 DECIMAL .XX ± 0.010 DECIMAL .XXX ± 0.005 WRITTEN PERMISSION OF ReelStrong, Inc. IS PROHIBITED.		REELSTRONG UTILITY FLEET <small>PHYSICAL: PO BOX 10000, HOUSTON, TEXAS 77208 TEL: 281-489-8048 FAX: 281-489-8048 F: 888-393-3932 info@reelstrongfleet.com</small>	
PROPRIETARY AND CONFIDENTIAL THE INFORMATION CONTAINED HEREIN IS THE SOLE PROPERTY OF ReelStrong, Inc. ANY REPRODUCTION OR DISSEMINATION OF THIS INFORMATION WITHOUT WRITTEN PERMISSION OF ReelStrong, Inc. IS PROHIBITED.		TITLE: PL-3RT7 (Custom w/ Hydraulic Outriggers, Economy URD Gathering Window, and Bed Rollers)	
MATERIAL: LBS		DATE: 1/6/2021	
FINISH:		PART NO.: PL-3RT7-0000 Spec Sheet	
APPRECIATION:		DATE: 1/6/2021	
SHEET 1 OF 1		DRAWING NOT TO SCALE	

8 7 6 5 4 3 2 1

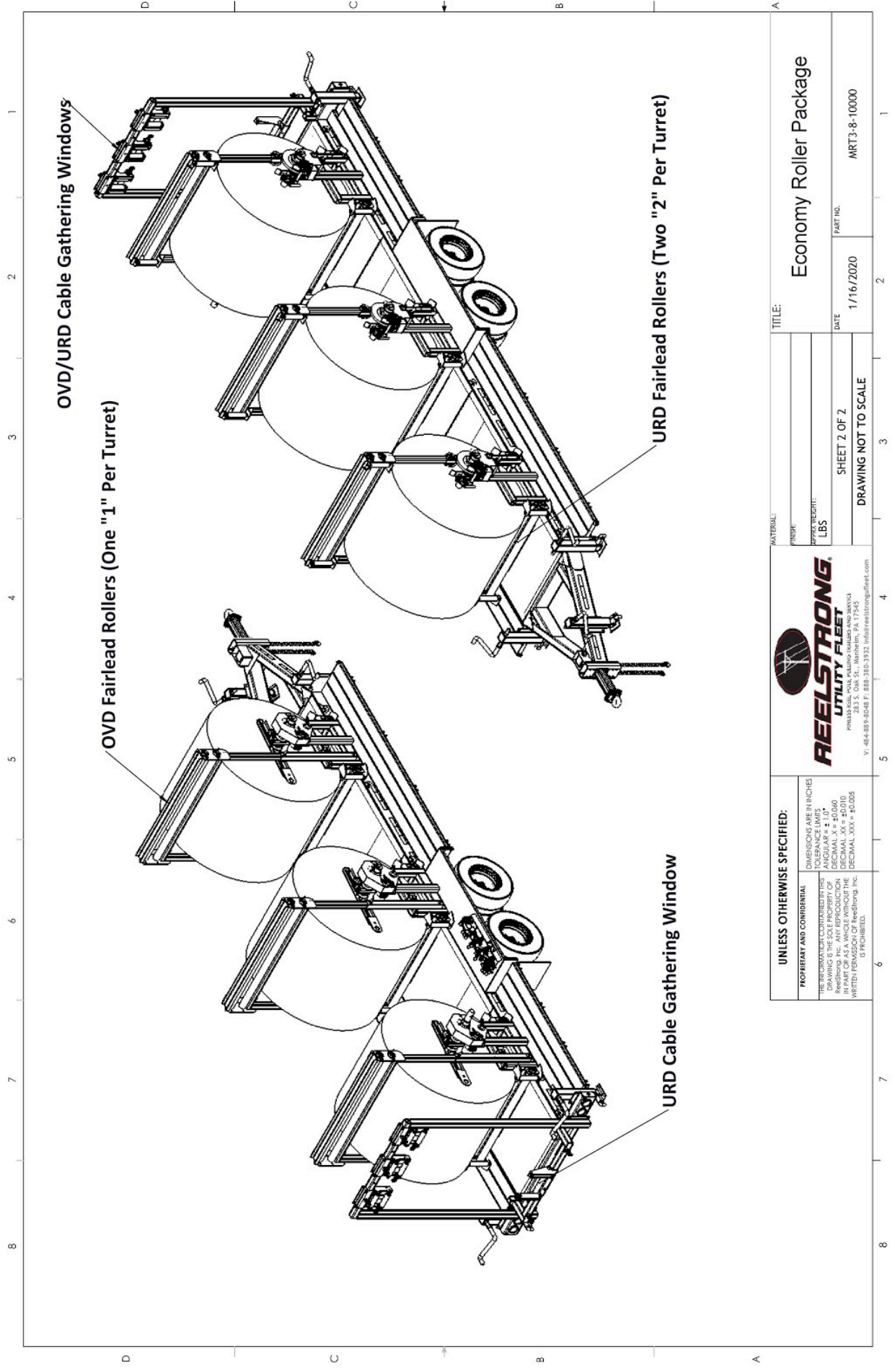


UNLESS OTHERWISE SPECIFIED: DIMENSIONS ARE IN INCHES TOLERANCE LIMITS ANGULAR ± 1.0° DECIMAL ± 0.005 DECIMAL .XX ± 0.010 DECIMAL .XXX ± 0.005 DECIMAL .XXXX ± 0.0005 UNLESS OTHERWISE SPECIFIED, ALL DIMENSIONS ARE TO BE TAKEN TO THE CENTERLINE UNLESS OTHERWISE NOTED. WRITTEN PERMISSION OF ReelStrong, Inc. IS PROHIBITED.		TITLE: PL-3RT8 (Custom w/ Telescoping Stabilizer Jacks)	
PROPERTY AND CONFIDENTIAL: THIS DRAWING IS THE SOLE PROPERTY OF ReelStrong, Inc. ANY REPRODUCTION OR DISSEMINATION OF THIS DRAWING WITHOUT WRITTEN PERMISSION OF ReelStrong, Inc. IS PROHIBITED.		MATERIAL: FINISH: APPROXIMATE WEIGHT: LBS	
DATE: 1/16/2021		PART NO.: MRT3-8-10000 Spec Sheet	
SHEET 1 OF 1		DATE: 1/16/2021	
DRAWING NOT TO SCALE			





UNLESS OTHERWISE SPECIFIED: DIMENSIONS ARE IN INCHES TOLERANCE LIMITS ANGULAR ± 1.0° DECIMAL ± .005 DECIMAL .XX ± .0010 DECIMAL .XXX ± .0005 DECIMAL .XXXX ± .0005 UNLESS OTHERWISE SPECIFIED, ALL DIMENSIONS ARE TO BE TAKEN TO THE CENTERLINE UNLESS OTHERWISE SPECIFIED. WRITTEN PERMISSION OF ReelStrong, Inc. IS PROHIBITED.		REELSTRONG. UTILITY FLEET <small>PHYSICAL: POUL, KELLUM, HOLLAND AND SERVICE</small> <small>VI: 484-898-8048 F: 888-393-3933 info@reelstrongfleet.com</small>	
PROPERTY AND CONFIDENTIAL THE INFORMATION CONTAINED HEREIN IS THE SOLE PROPERTY OF ReelStrong, Inc. ANY REPRODUCTION OR DISSEMINATION OF THIS INFORMATION WITHOUT WRITTEN PERMISSION OF ReelStrong, Inc. IS PROHIBITED.		PREMIUM ROLLER PACKAGE	
MATERIAL: FINISH: APPROXIMATE WEIGHT: LBS		TITLE:	
SHEET 2 OF 2		DATE: 1/16/2020	
DRAWING NOT TO SCALE		PART NO.: MRT3-8-10000	



UNLESS OTHERWISE SPECIFIED:		DIMENSIONS ARE IN INCHES	
TOLERANCE LIMITS		ANGULAR ± 1.0°	
DRAWING IS THE SOLE PROPERTY OF		DECIMAL XX ± 0.010	
Reelstrong, Inc. ANY REPRODUCTION		DECIMAL XXX ± 0.005	
OR USE OF THIS DRAWING WITHOUT		DECIMAL XXXX ± 0.0005	
WRITTEN PERMISSION OF Reelstrong, Inc.		IS PROHIBITED.	
MATERIAL:		TITLE:	
FINISH:		Economy Roller Package	
APPROXIMATE:		DATE:	
LBS		1/16/2020	
SHEET 2 OF 2		PART NO.	
DRAWING NOT TO SCALE		MRT3-8-10000	

REELSTRONG
UTILITY FLEET

PHYSICAL: POLE, PULLING, HOISTS AND SERVICE
V. 484-898-8048 F. 888-393-3933 info@reelstrongfleet.com

PROPERTY AND CONFIDENTIAL

THE INFORMATION CONTAINED HEREIN

DRAWING IS THE SOLE PROPERTY OF

Reelstrong, Inc. ANY REPRODUCTION

OR USE OF THIS DRAWING WITHOUT

WRITTEN PERMISSION OF Reelstrong, Inc.

IS PROHIBITED.

