

REELSTRONG®

UTILITY FLEET

PL-4RT POWERLOCK™ REEL TRAILER SPECS



LOWEST TOTAL COST OF OWNERSHIP (TCO) FROM:

- **LIFETIME WARRANTY PINLESS POWERLOCK™** Reel Bar Securement
- INDUSTRY LEADING 20" OVERSIZED TURRET BEARING
- 250K Axial, 90K ft/lbs Moment Load Lockable on 3 Degree Intervals
- OPEN TOP, "NON ENCAPSULATED" NYLATRON BEARING SADDLE (low-coefficient of friction). OPEN TOP = LESS FRICTION/LOW MAINTENANCE and EASIER PAY-OUT.
- No Pins or Cotters to Secure Reel Bar (*most critical safety point*)
- Yellow Zinc Electro-Plated and Stainless Precision Machined Components
- **PRACTICAL:** No Expensive, Unnecessary Bronze Components, yet we Don't Cut Corners and Provide Premium, Heavy Duty, Top-Quality Latches, Hardware, Fittings and Components.

BUILT FOR SAFETY. BUILT FOR SPEED. BUILT TO LAST.

CAPACITIES

- PL-4RT5: 41,400 GVWR @ 15% Tongue Weight

AXLES

- PL-4RT5: Triple 12K Sprung

WHEELS

- PL-4RT5: (6) 17.5 x 6.75 HC / 8 on 6.5 BC w/ 0.19 Inset

TIRES

- PL-4RT5: (6) LT235/75R17.5 LR-H Tires

BRAKES

- PL-4RT5: 12.25" x 5.00" Electric w/ Safety Breakaway Kit

OVERALL LENGTH

- PL-4RT5: 440" Approx.

WIDTH

- PL-4RT5: 96"

CURB WEIGHT: 12,850 lbs. Approx. (Trailer Weight will Vary with Options & Finishes Chosen)

PAYLOAD: ALL FINAL PAYLOADS BASED ON CHOSEN MODEL AND OPTIONS

REEL WEIGHT (PAYLOAD)

- PL-4RT5: 20,000 lbs. Approx. (4x 5,000 lbs. Per Turret)

REEL DIA

- PL-4RT5: 72" Maximum

REEL WIDTH

- PL-4RT5: 54" Maximum

REEL BAR DIA

- PL-4RT5: 2.5" Heavy Wall Yet Light to Handle DOM

STANDARD FEATURES

- **PINLESS POWERLOCK™ LIFETIME WARRANTY**
VIRTUALLY ZERO MAINTENANCE Yellow Zinc Electroplated
- **INDUSTRY LEADING 20" OVERSIZED TURRET BEARING w/**

—All specifications / designs are subject to change without notice - All GVWR and reel capacities are de-rateable to your needs.

STANDARD FEATURES (cont.)

250K Axial, 90K ft/lbs Moment Load Lockable on 3 Deg. Intervals

- **OPEN TOP, "NON ENCAPSULATED" NYLATRON BEARING SADDLE** (low-coefficient of friction). OPEN TOP = LESS FRICTION/LOW MAINTENANCE and EASIER PAY-OUT. (Haven't Replaced a Saddle in 14 Years)
- Oil Bath Hubs (Greaseable Option All)
- Electric Brakes
- Wheel Chock Holders
- Removable Turrets to Turn Trailer into Flatbed, if Needed.
- **Three (3) POINT STEPS AND HANDHOLDS STANDARD**

STANDARD TRAILER BODY

- 12" X 3" X ¼" Frame
- 6-Position Adjustable Hitch
- ¾" X 36" GR70 Yellow Zinc Safety Chains with Hooks
- 12,000 lbs. Static Front Jack w/ Spring Return
- Ground Lug: Copper Alloy Star Washer Bolted to Frame (Welded Optional)
- Fenders: ⅛" Fabricated Diamond Plate
- (2) Rear 8,000 lbs. Static Stabilizer Jacks

WIRING

- DOT / ICC-- FMVSS / CMVSS Approved LED ULTRA- HIGH VISIBILITY 180 DEGREE BULLET Marker and Clearance Lights
- LED Sealed Beam Rubber Mounted Stop, Turn, Tail and Marker Lights
- Breakaway Kit with Absorbed Glass Mat (AGM) Battery
- 100% Sealed Heat-Shrunked Wiring Connections w/ Full Loom
- FULLY PROTECTED 7 or 6 Way Female Plug acts as Junction Box Recessed in FRAME RAIL. No Easily Damaged Plastic Junction Boxes

PAINT

- Biodegradable Pretreat Acid Cleaning
(Superior to re-used sandblasting material that can impregnate metals with oil)
- Seams Caulked
- Rust Preventative 2-Part Epoxy Primer
- Two-Part Polyurethane Topcoats (2 topcoats)
- Standard Colors: White and CAT Yellow (Custom Available)

OPTIONS

- 13 HP HONDA Engine Hydraulic Power Pack Comes STANDARD w/ ENGINE COVER, 15 Gallon Reservoir, Replaceable Oil Filter, Pressure Gauge and Solar Fade Resistant Plastic Control Placard. (Electric Start Optional)

OPTIONS (cont.)

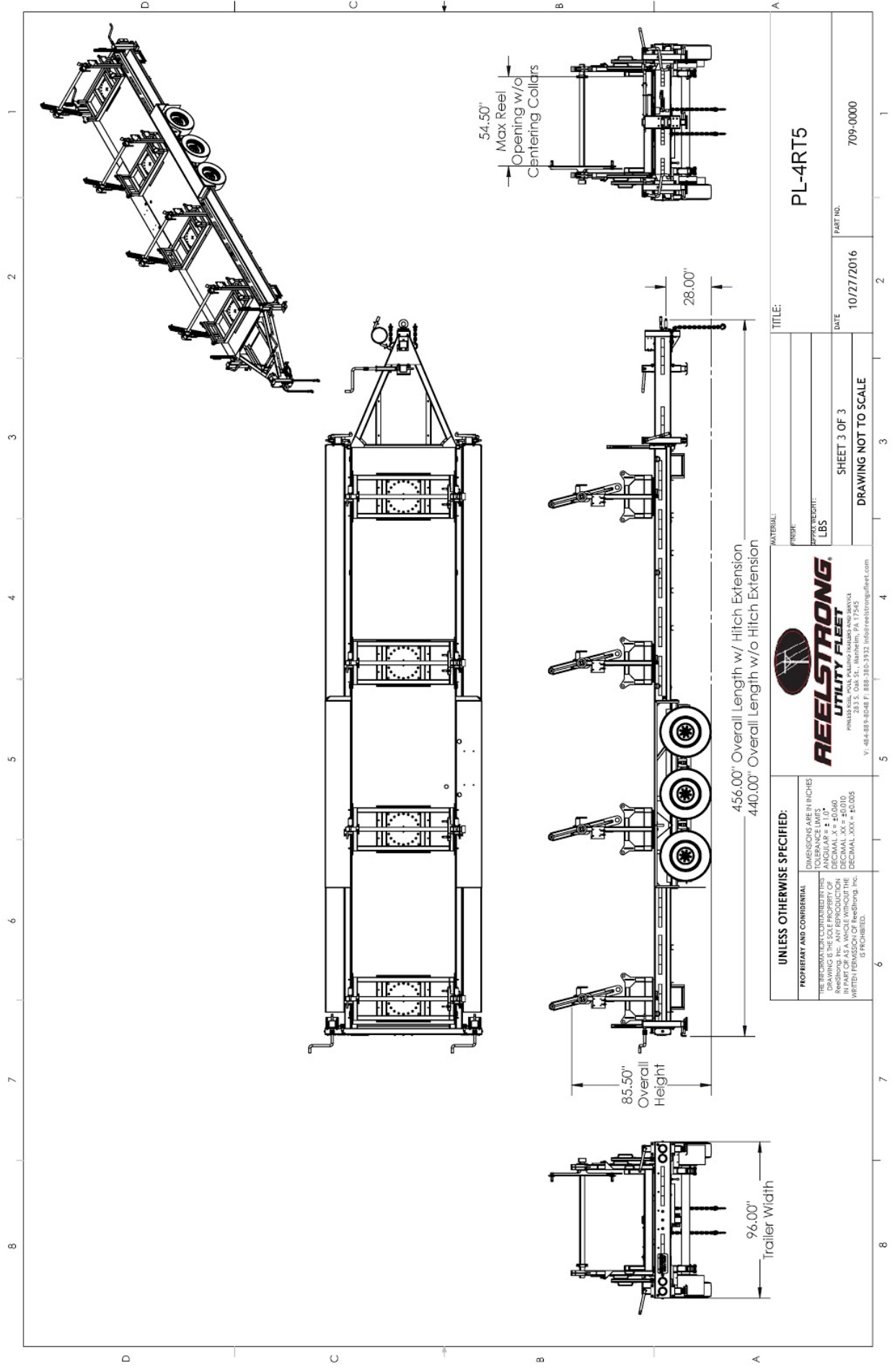
- Ten (10) Year Galvanized Structural Warranty (2-Year Painted)
- Rotating Arbor Ground
- 3,300 ft/lbs Torque Hydraulic Take-up Retriever. (Motor Spooled w/ Reel Brake ILO Cross-Over Relief Valve for Smooth Instant Reel Stoppage)
- 2-7/16" Universal Adapter for Capstan and Power Reel Attachments
- Hydraulic Hose Rotary Swivel Union (*manages & eliminates loose hydraulic hoses*)
- 7 Inch General Purpose Capstan
- Collapsible Power Reel
- 16" Bronze Alloy Ventilated Reel Brake w/ Ventilated Guard
- All Stainless Steel Fasteners (½" and under)
- Anti-Skid/Anti-Glare Sand Paint on all Walking Surfaces
- Various Trailer Light Plugs (Customer Choice)
- Aluminum or Steel Toolbox
- Air Brakes w/ ABS
- 16" Long 6-Bolt Hitch Extension (w/ 52" Safety Chains and Breakaway Cable Extension)
- 3" Lunette Eye
- Wiring Connections Soldered and Sealed w/ Heat Shrink Tubing
- Plug-and-Play Sealco Wiring Harness
- Wheel Chocks: Rubber or All Weather Galvanized Grip Strut
- Spare Tire and Mount
- Solar Charged Breakaway Kit
- Strobe Warning Lights
- Hydraulic Front Jack
- Hydraulic Rear and Intermediate Outriggers
- Telescoping Rear and Intermediate Outriggers
- Truck-Lite Lighting
- Lug Nut Indicators

OPTIONAL PREMIUM ROLLER PACKAGE

- OVD Fairlead Rollers (One "1" Per Turret)
- URD Fairlead Rollers (Two "2" Per Turret)
- OVD/URD Cable Gathering Windows
- URD Arching/Traversing Fairlead

OPTIONAL ECONOMY ROLLER PACKAGE

- OVD Fairlead Rollers (One "1" Per Turret)
- URD Fairlead Rollers (Two "2" Per Turret)
- OVD/URD Cable Gathering Windows
- URD Cable Gathering Window



TITLE:		PL-4RT5	
MATERIAL:		PART NO. 709-0000	
FINISH:		DATE:	10/27/2016
APPROXIMATE WEIGHT:	LBS	DRAWING NOT TO SCALE	
UNLESS OTHERWISE SPECIFIED:		SHEET 3 OF 3	
DIMENSIONS ARE IN INCHES TOLERANCE LIMITS ANGULAR ± 1.0° DECIMAL ± 0.005 DECIMAL .XX ± 0.010 DECIMAL .XXX ± 0.005 WRITTEN PERMISSION OF ReelStrong, Inc. IS PROHIBITED.		DRAWING NOT TO SCALE	



456.00" Overall Length w/ Hitch Extension
 440.00" Overall Length w/o Hitch Extension

85.50" Overall Height

96.00" Trailer Width

54.50" Max Reel Opening w/o Centering Collars