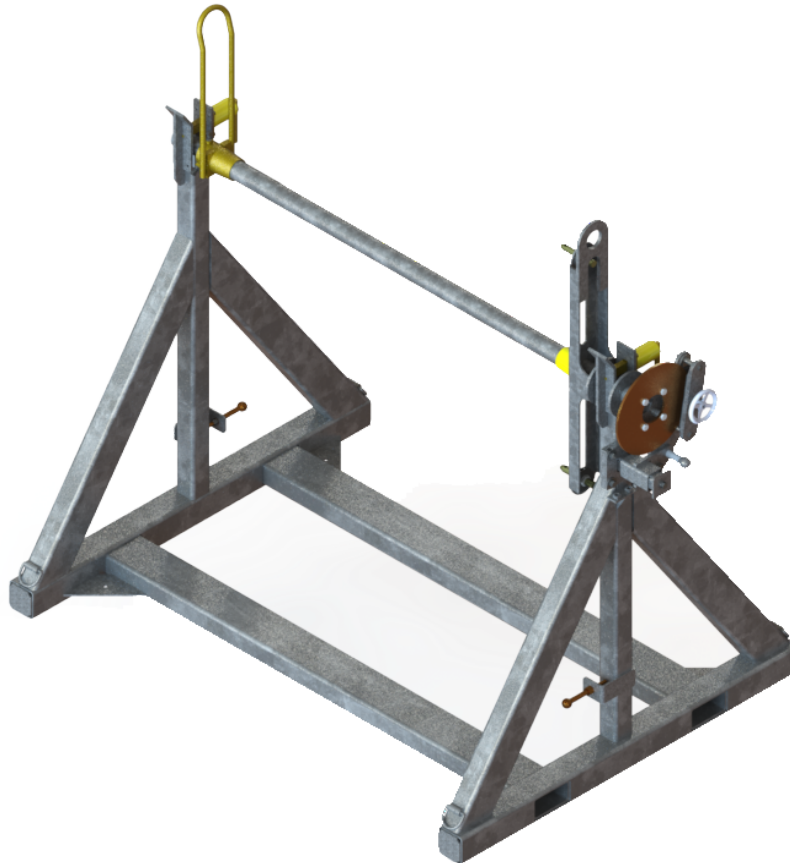


REELSTRONG®

UTILITY FLEET

RS5-8 POWERLOCK™ REEL STAND SPECS



EXCLUSIVE STANDARD ADDED VALUE:

- POWERLOCK™ Technology Provides Industry Leading Safety, Ease of Use, Low Maintenance and Durability.
 - SAFETY and Peace of Mind
 - No Pins, Cotters, or Lanyards that Secure the Reel Arbor (which is the most critical safety point).
 - Faster Reel loading, Unloading, and Deployment Reduces Labor Costs and Fatigue on Workers.
- No Tools Required to Replace Reels

BUILT FOR SAFETY. BUILT FOR SPEED. BUILT TO LAST.

MAX REEL CAPACITY (customizable)

- Diameter: 96"
- Width: 60"
- Weight: 5,000-8,000 lbs.

ARBOR BAR: 2.5" w/ Centering Collar (Optional Reel Adapters Available for Larger Arbor Holes)

DIMENSIONS (customizable)

- Length: 56.5"
- Width: 82.25"
- Height: 60.75" w/o Reel
- Weight: 850 lbs.

Actual Reel Stand Weight will Vary with Options & Finishes Chosen.

STANDARD FEATURES

- POWERLOCK™ Technology Provides Industry Leading Safety, Ease of Use, Low Maintenance and Durability.
- Arbor Assembly Lifts Out of Brake Dog w/o Side-Shifting the Arbor to Disengage
- No Tools Required to Replace Reels
- Ground Lug: Copper Alloy Bolted to Frame

CONSTRUCTION

- Reinforced Truss on Rectangular Base Frame
- Steel Tube Frame Continuously Welded
- D-Rings Located on Each Corner for Tie Down

PAINT

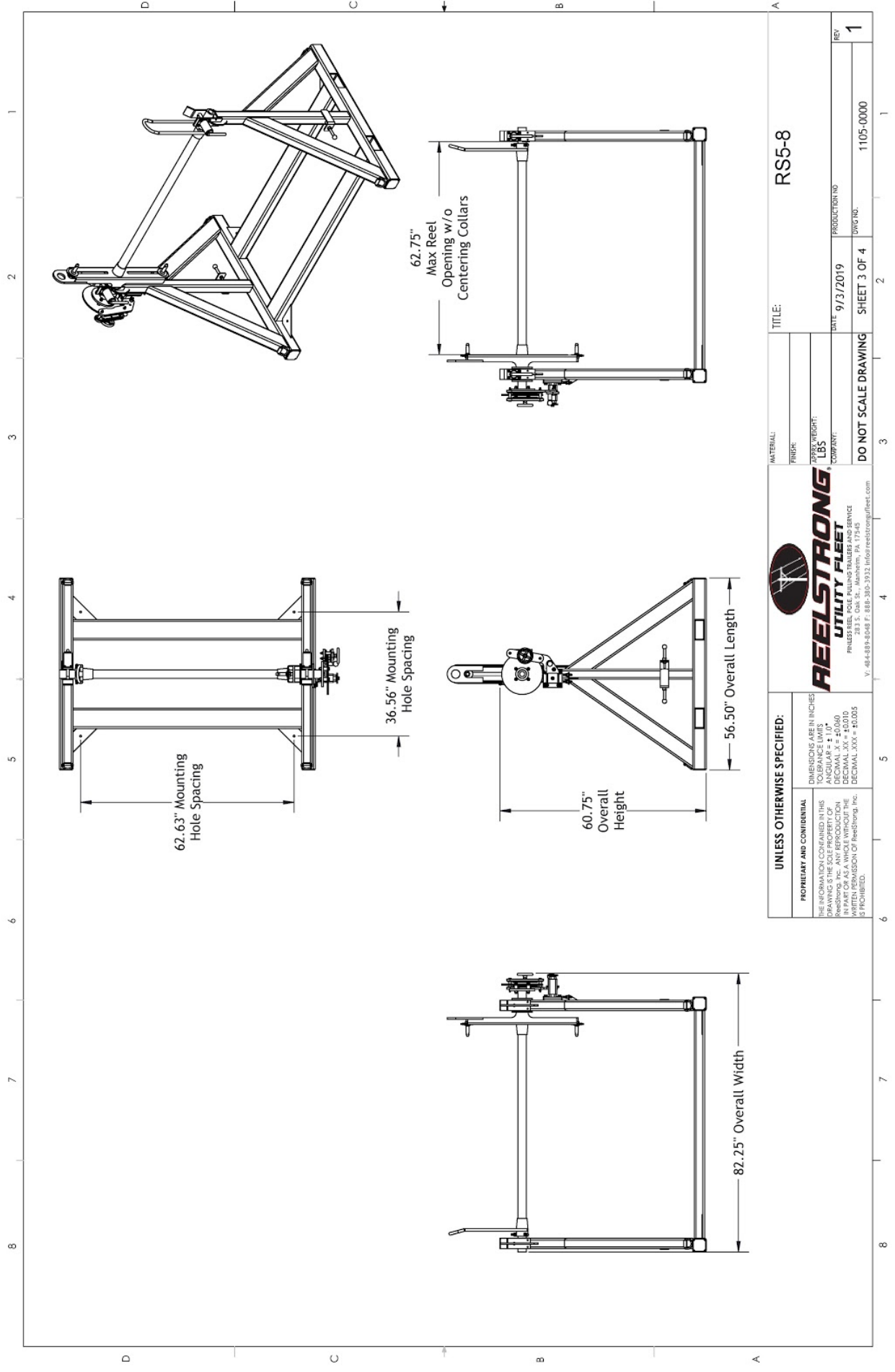
- I.M.P.A.C.T Intense Metal pH Acid Cleaning Technology
- Hydrofluoric, Sulfuric, Phosphoric ACID Blend Cleaning Preparation (Re-used sandblasting material can impregnate metals with oil)
- Rust Preventative 2-Part Epoxy Primer
- Standard Colors: Red, Black, White and CAT Yellow

OPTIONS

- 13 HP HONDA Engine Hydraulic Power Pack Comes STANDARD w/ ENGINE COVER, 15 Gallon Reservoir, Replaceable Oil Filter, Pressure Gauge and Solar Fade Resistant Plastic Control Placard. (Electric Start Optional)
- 10-Year Galvanized Structural Warranty (2-Year Painted)
- 12" Bronze Alloy Reel Brake
- 16" Bronze Alloy Ventilated Reel Brake
- Hydraulic Hand Pump, Accumulator, and Pressure Gauge. Smooth Operation and Consistent Brake Pressure. (Pairs with the 16" Reel Brake)

OPTIONS (cont.)

- 3,300 ft/lbs Torque Hydraulic Take-up Retriever. (Motor Spooled w/ Reel Brake ILO Cross-Over Relief Valve for Smooth Instant Reel Stoppage)
- 2-7/16" Universal Adapter for Capstan and Power Reel Attachments
- 7 Inch General Purpose Capstan
- Collapsible Power Reel
- Reel Adapters Available for Larger Reel Arbor Holes
- Aluminum or Steel Toolbox
- Wiring Connections Soldered and Sealed w/ Heat Shrink Tubing
- Strobe Warning Lights
- All Stainless Steel Fasteners (1/2" and under)



UNLESS OTHERWISE SPECIFIED: DIMENSIONS ARE IN INCHES TOLERANCE LIMITS ANGULAR ± 1.0° DECIMAL X = ±0.006 FRACTIONS ± 0.003 WRITTEN PERMISSION OF ReelStrong, Inc. IS PROHIBITED.		REELSTRONG UTILITY FLEET <small>FINESSE REEL, POLE, PULLING TRAILERS AND SERVICE</small> <small>111 PA. 216</small> <small>Y. 484-894-048 F. 888-380-3932 info@reelstrong@reel.com</small>		MATERIAL: FINISH: JOBS WEIGHT: LBS COMPANY:	TITLE: RS5-8
		DATE: 9/3/2019 PRODUCTION NO:		DO NOT SCALE DRAWING	
		SHEET 3 OF 4		DRG NO: 1105-0000	
		REV: 1			