

# **REELSTRONG®**

## **UTILITY FLEET**

### **GR POWERLOCK II™ SELF-LOADING REEL TRAILER SPECS**



#### **EXCLUSIVE STANDARD ADDED VALUE:**

- POWERLOCK II™ Technology Provides Industry Leading Safety, Ease of Use, Low Maintenance, and Durability.
- SAFETY and Peace of Mind
- No Pins, Cotters, or Lanyards that Secure the Reel Arbor (which is the most critical safety point)
- Faster Reel Loading, Unloading, and Deployment Reduce Labor Costs and Fatigue on Workers.

***BUILT FOR SAFETY. BUILT FOR SPEED. BUILT TO LAST.***

## **CAPACITIES**

- GR3: 5,980 lbs. GVWR @ 15% Tongue Weight (available special order)
- GR6: 8,050 lbs. GVWR @ 15% Tongue Weight (available special order)
- GR8: 11,050 lbs. GVWR @ 15% Tongue Weight
- GR10: 13,800 lbs. GVWR @ 15% Tongue Weight

## **AXLES**

- GR3: 5.2K lbs. Axle
- GR6: 7K lbs. Axle
- GR8: 10K lbs. Axle
- GR10: 12K lbs. Axle

## **WHEELS**

- GR3: (2) 16 x 6K / 6 on 5.5 BC w/ Zeroset
- GR6: (2) 16 x 6K / 8 on 6.5 BC w/ Zeroset
- GR8: (2) 17.5 x 6.75 HC / 8 on 6.5 BC w/ 0.19 Inset
- GR10: (2) 17.5 x 6.75 HC / 8 on 6.5 BC w/ 0.19 Inset

## **TIRES**

- GR3: (2) 235/80R16 LR-D Tires
- GR6: (2) 235/85R16 LR-E Tires
- GR8: (2) 215/75R17.5 LR-H Tires
- GR10: (2) 235/75R17.5 LR-H Tires

## **BRAKES**

- GR6: 12" x 2" Electric w/ Safety Breakaway Kit
- GR6: 12.25" x 3.38" Electric w/ Safety Breakaway Kit
- GR8: 12.25" x 3.38" Electric w/ Safety Breakaway Kit
- GR10: 12.25" x 5.00" Electric w/ Safety Breakaway Kit

## **PAYLOAD: ALL FINAL PAYLOADS BASED ON CHOSEN MODEL AND OPTIONS**

### **REEL WEIGHT (PAYLOAD)**

- GR3: 3,000 lbs. Approx.
- GR6: 6,000 lbs. Approx.
- GR8: 8,500 lbs. Approx.
- GR10: 10,000 lbs. Approx.

**REEL DIAMETER:** 125" Maximum

### **REEL OPENING**

- GR3: 64" Approx.

## **REEL OPENING (cont.)**

- GR6: 64" Approx.
- GR8: 64" Approx.
- GR10: 60.50" Approx.

**REEL SHAFT DIAMETER:** 2.50" Solid w/ Centering Collars

## **OVERALL LENGTH:**

- GR3: 141.75" Approx.
- GR6: 141.75" Approx.
- GR8: 141.75" Approx.
- GR10: 141.75" Approx.

**OVERALL WIDTH:** 102" Overall Width

## **OVERALL WEIGHT:**

- GR3: 1,950 lbs. Approx.
- GR6: 1,950 lbs. Approx.
- GR8: 2,200 lbs. Approx.
- GR10: 2,300 lbs. Approx.

*Actual Trailer Weight will Vary with Options & Finishes Chosen.*

## **STANDARD FEATURES**

- POWERLOCK II™ Technology Provides Industry Leading Safety, Ease of Use, Low Maintenance, and Durability.
- Auto-locking Swing Out Reel Bar Retainer w/ Secondary Cylinder Lock
- Oil Bath Hubs (Greaseable Option All)
- Electric Brakes

## **STANDARD TRAILER BODY**

- Heavy Duty 6" X 4" X ¼" Frame
- 6-Position Adjustable Hitch
- ¾" X 36" GR70 Yellow Zinc Safety Chains with Hooks
- 8,000 lbs. Static Front Jack

## **WIRING**

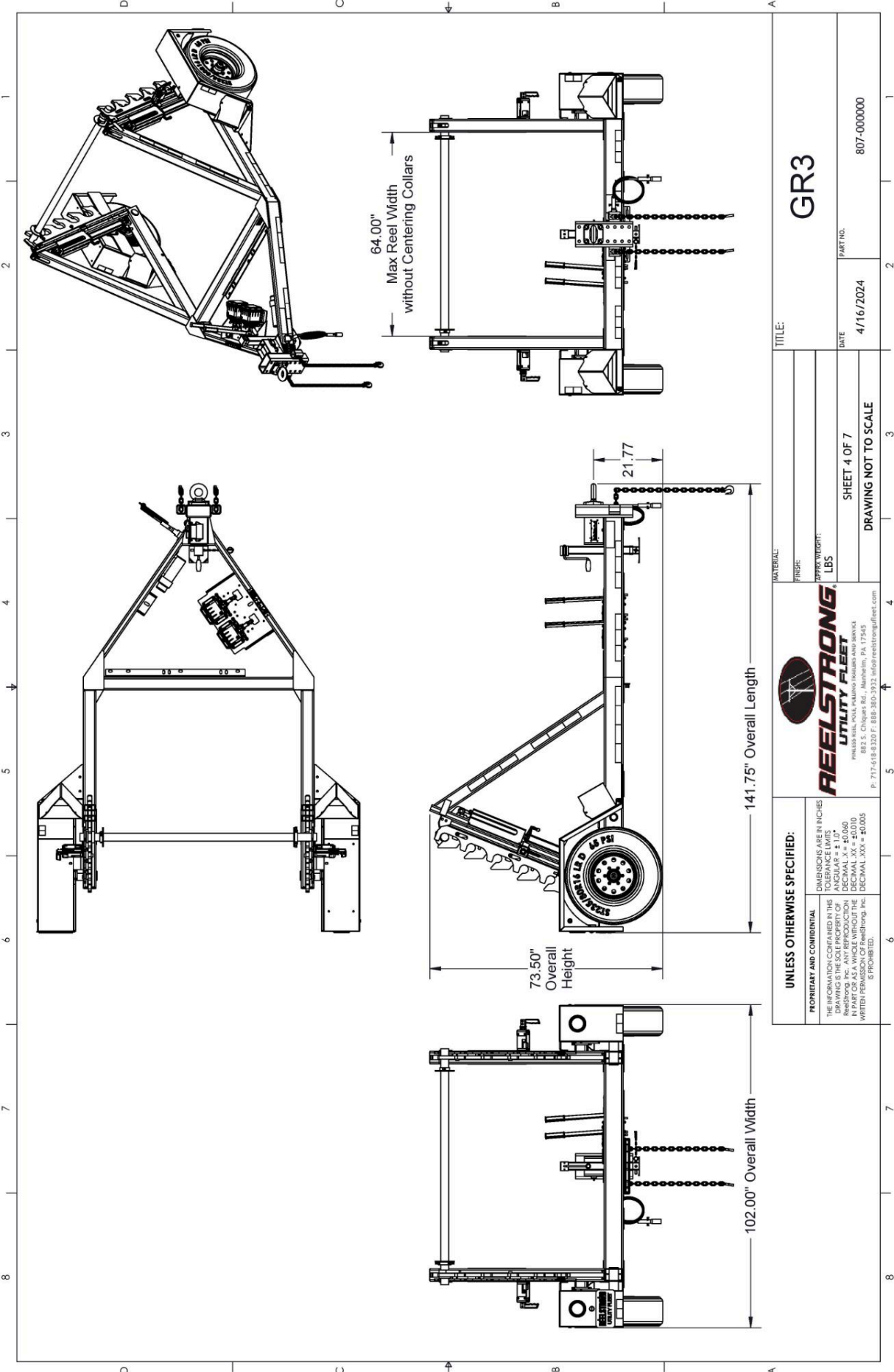
- DOT / ICC Approved LED Lights and Conspicuity Reflective Tape
- FMVSS / CMVSS Standard 108 LED Lighting
- Sealed Beam, Rubber Mounted Stop, Turn, Tail and Marker Lights
- 100% Sealed Heat-Shrunked Wiring Connections w/ Full Loom
- Breakaway Kit with Absorbed Glass Mat (AGM) Battery

## **PAINT**

- Biodegradable Pretreat Acid Cleaning  
(Superior to re-used sandblasting material that can impregnate metals with oil)
- Seams Caulked
- Rust Preventative 2-Part Epoxy Primer
- Standard Colors: Red, Black, White and CAT Yellow

## **OPTIONS**

- 10-Year Galvanized Structural Warranty (2-Year Painted)
- 13 HP HONDA Engine Hydraulic Power Pack Comes STANDARD w/ ENGINE COVER, 15 Gallon Reservoir, Replaceable Oil Filter, Pressure Gauge and Solar Fade Resistant Plastic Control Placard. (Electric Start Optional)
- Rim Drive Take-up Retriever
- 16" Long 6-Bolt Hitch Extension (w/ 52" Safety Chains and Breakaway Cable Extension)
- 3" Lunette Eye
- Rotating Arbor Ground
- Wiring Connections Soldered and Sealed w/ Heat Shrink Tubing
- Plug-and-Play Sealco Wiring Harness
- Wheel Chocks: Rubber or All Weather Galvanized Grip Strut
- Spare Tire and Mount
- Solar Charged Breakaway Kit
- All Stainless Steel Fasteners (1/2" and under)
- 13 HP Honda Engine Hydraulic Power Unit
- Engine Cover
- 9" Bronze Overspin Brake
- Truck-Lite Lighting
- Lug Nut Indicators



**UNLESS OTHERWISE SPECIFIED:**  
 DIMENSIONS ARE IN INCHES  
 TOLERANCE LIMITS  
 ANGULAR ± 1.0°  
 DECIMAL ± 0.015  
 DECIMAL XX ± 0.010  
 DECIMAL XXX ± 0.005  
 WRITTEN PERMISSION OF ReelStrong, Inc. IS PROHIBITED.



MATERIAL:  
 FIGURE:  
 APPROX. WEIGHT:  
 LBS  
 SHEET 4 OF 7  
 DRAWING NOT TO SCALE

TITLE: **GR3**  
 DATE: 4/16/2024  
 PART NO.: 807-000000

8 7 6 5 4 3 2 1

A B C D A B C D

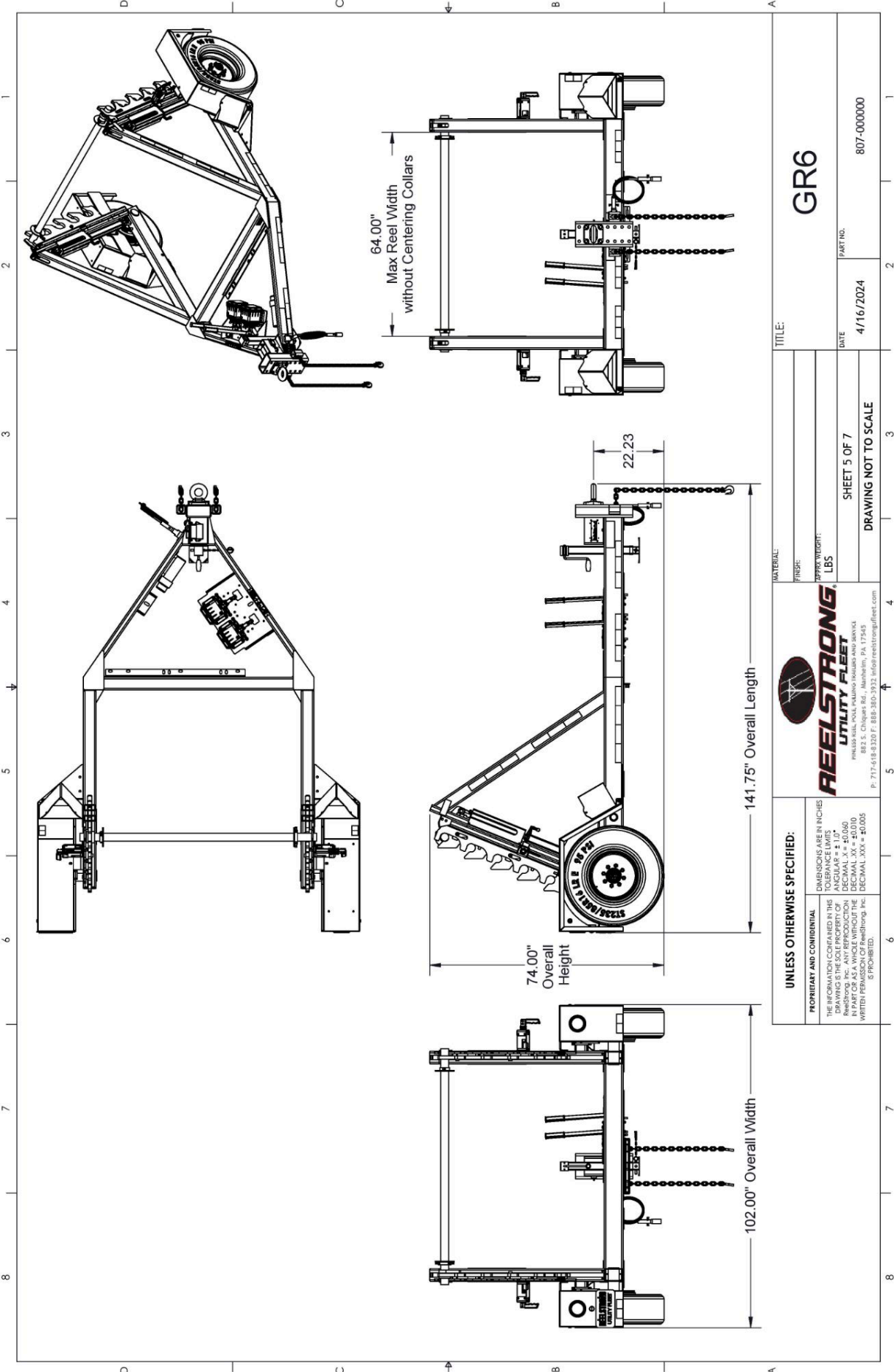
64.00"  
 Max Reel Width  
 without Centering Collars

141.75" Overall Length

73.50"  
 Overall  
 Height

102.00" Overall Width

21.77



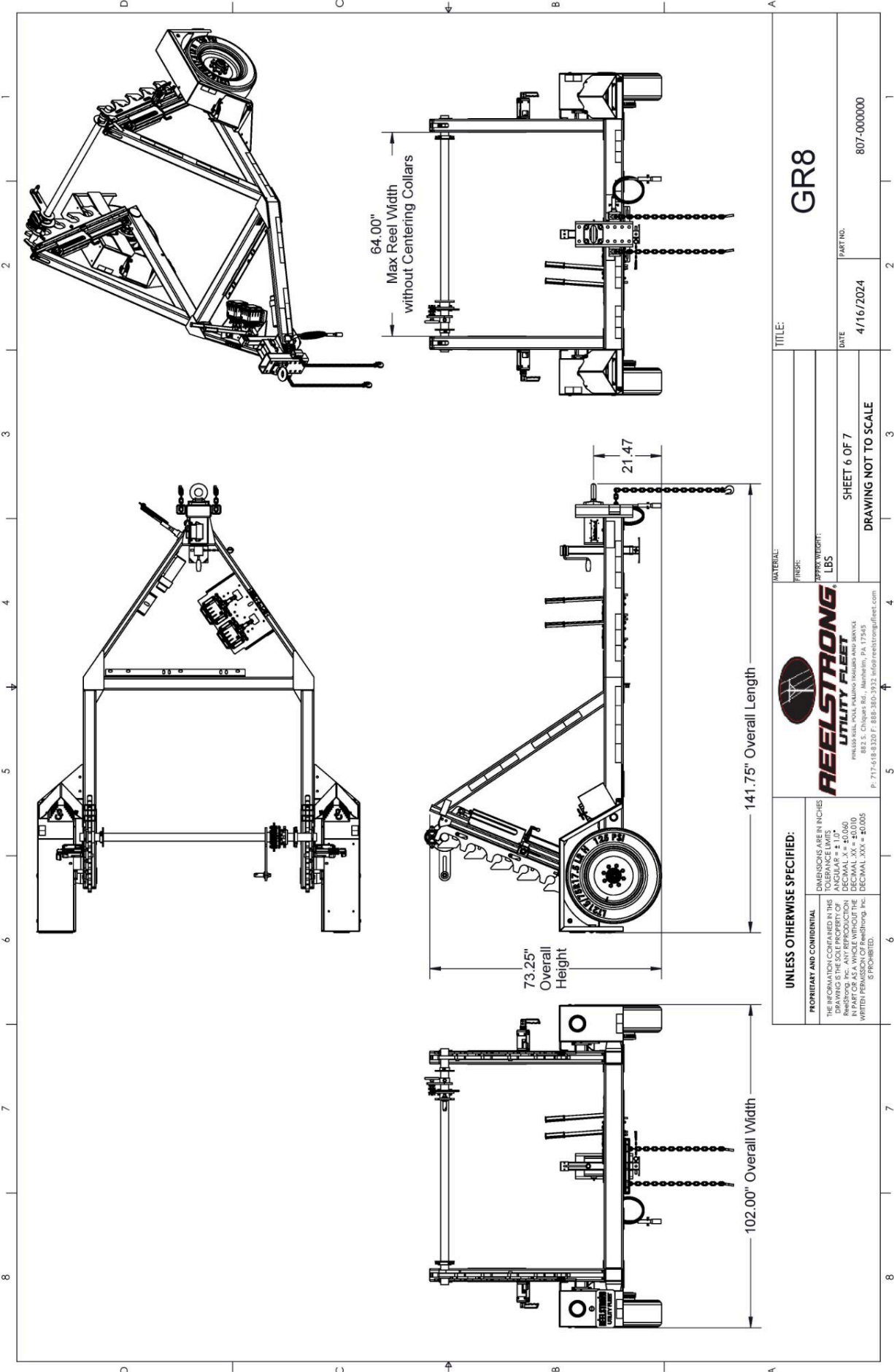
**UNLESS OTHERWISE SPECIFIED:**  
 DIMENSIONS ARE IN INCHES  
 TOLERANCE LIMITS  
 ANGULAR ± 1.0°  
 DECIMAL ± 0.015  
 DECIMAL XX ± 0.010  
 DECIMAL XXX ± 0.005  
 WRITTEN PERMISSION OF ReelStrong, Inc. IS PROHIBITED.

**REELSTRONG**  
 UTILITY FLEET  
 PHILADELPHIA, PA  
 882 S. CHICAGO RD., MARLBOROUGH, PA 17545  
 P: 717-618-8329 F: 888-380-3932 info@reelstrongfleet.com

MATERIAL:  
 FIGURE:  
 APPROX. WEIGHT:  
 LBS

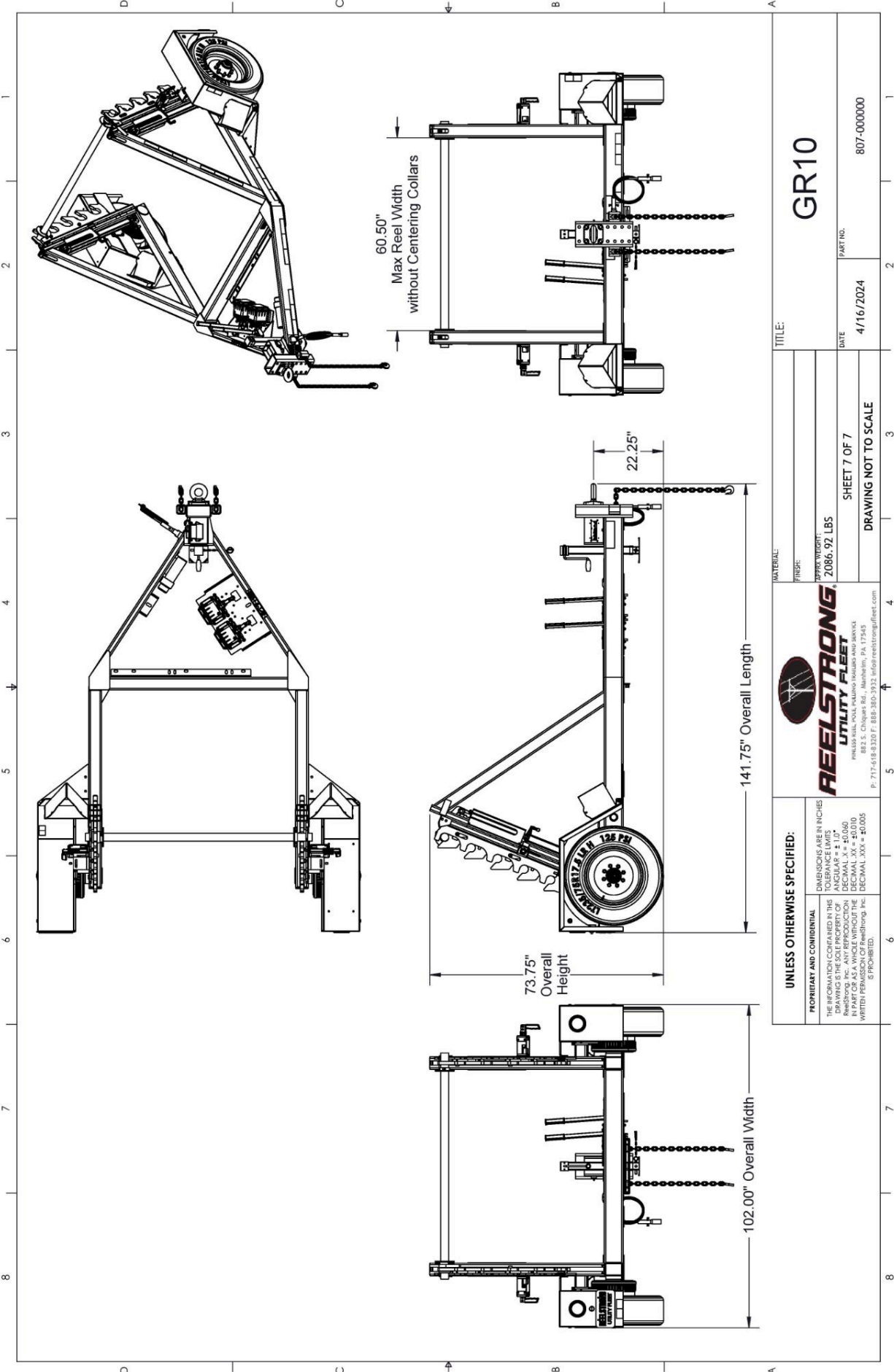
TITLE: **GR6**  
 DATE: 4/16/2024  
 PART NO.: 807-000000

SHEET 5 OF 7  
 DRAWING NOT TO SCALE



<b>UNLESS OTHERWISE SPECIFIED:</b> <small>           DIMENSIONS ARE IN INCHES            TOLERANCE LIMITS            ANGULAR ± 1.0°            DECIMAL ± 0.015            DECIMAL XX ± 0.010            DECIMAL XXX ± 0.005            WRITTEN PERMISSION OF ReelStrong Inc. IS PROHIBITED.         </small>		<b>REELSTRONG</b> <b>UTILITY FLEET</b> <small>           PHILADELPHIA, PA 19104            822 S. CHICAGO RD., MARLBOROUGH, PA 17545            P: 717-618-8329 F: 888-380-3932 info@reelstrongfleet.com         </small>		<b>GR8</b> <small>           TITLE:         </small>	
<small>           MATERIAL:            FINISH:            APPROX. WEIGHT:            LBS         </small>		<small>           SHEET 6 OF 7            DRAWING NOT TO SCALE         </small>		<small>           PART NO.            807-000000         </small>	
<small>           DATE            4/16/2024         </small>					





**UNLESS OTHERWISE SPECIFIED:**

PROPRIETARY AND CONFIDENTIAL  
 DIMENSIONS ARE IN INCHES  
 TOLERANCE LIMITS  
 ANGULAR ± 1.0°  
 DECIMAL ± 0.015  
 DECIMAL XX ± 0.010  
 DECIMAL XXX ± 0.005  
 WRITTEN PERMISSION OF ReelStrong, Inc.  
 IS PROHIBITED.

**REELSTRONG**  
**UTILITY FLEET**  
 PHILADELPHIA, PA 19104  
 822 S. CHICHESTER RD., MARLBOROUGH, PA 17545  
 P: 717-618-8320 F: 888-380-3932 info@reelstrongfleet.com

MATERIAL:  
 FIGURE:  
 APPROX. WEIGHT:  
**2086.92 LBS**

SHEET 7 OF 7  
 DRAWING NOT TO SCALE

TITLE: **GR10**

DATE: 4/16/2024

PART NO.: 807-000000