

REELSTRONG®

UTILITY FLEET

RS10-12 POWERLOCK™ REEL STAND SPECS



EXCLUSIVE STANDARD ADDED VALUE:

- POWERLOCK™ Technology Provides Industry Leading Safety, Ease of Use, Low Maintenance and Durability.
 - SAFETY and Peace of Mind
 - No Pins, Cotters, or Lanyards that Secure the Reel Arbor (which is the most critical safety point).
 - Faster Reel loading, Unloading, and Deployment Reduces Labor Costs and Fatigue on Workers.
- No Tools Required to Replace Reels

BUILT FOR SAFETY. BUILT FOR SPEED. BUILT TO LAST.

MAX REEL CAPACITY (customizable)

- Diameter: 108"
- Width: 60"
- Weight: 10,000-12,000 lbs.

ARBOR BAR

- RS10-12: 3.00" w/ Centering Collar
(Optional Reel Adapters Available for Larger Arbor Holes)

DIMENSIONS (w/ Take-up Retriever and 16" Reel Brake)

- Length: 68"
- Width: 102.25"
- Height: 68.25" w/o Reel
- Weight: 1,400 lbs.

Actual Reel Stand Weight will Vary with Options & Finishes Chosen.

DIMENSIONS (w/ 16" Drop-in Reel Brake)

- Length: 68.00"
- Width: 92.00"
- Height: 67.75" w/o Reel
- Weight: 1,150 lbs.

Actual Reel Stand Weight will Vary with Options & Finishes Chosen.

STANDARD FEATURES

- POWERLOCK™ Technology Provides Industry Leading Safety, Ease of Use, Low Maintenance and Durability.
- Arbor Assembly Lifts Out of Brake Dog w/o Side-Shifting the Arbor to Disengage
- No Tools Required to Replace Reels
- Ground Lug: Copper Alloy Bolted to Frame

CONSTRUCTION

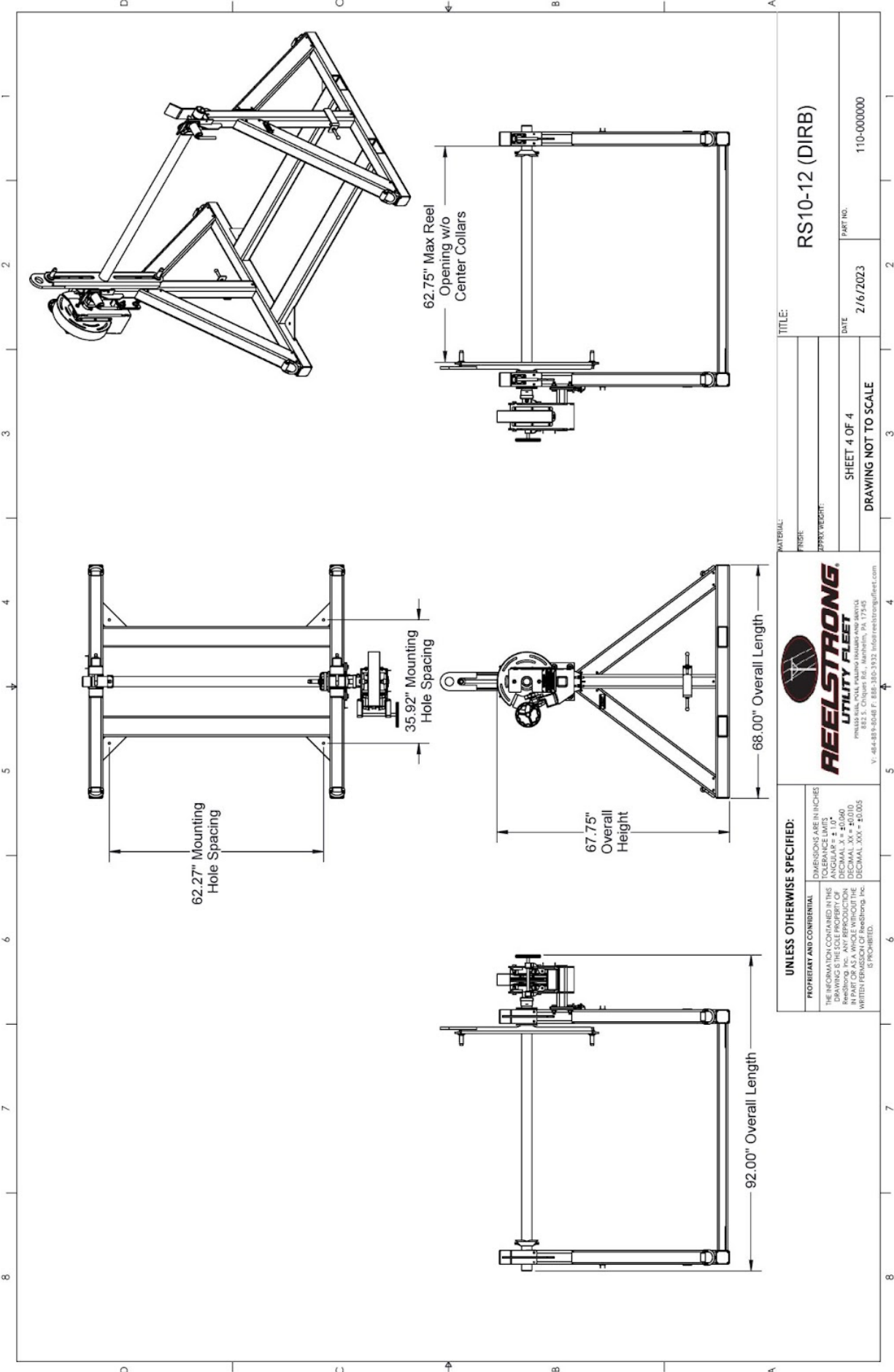
- Reinforced Truss on Rectangular Base Frame
- Steel Tube Frame Continuously Welded
- D-Rings Located on Each Corner for Tie Down

PAINT

- Biodegradable Pretreat Acid Cleaning
(Superior to re-used sandblasting material that can impregnate metals with oil)
- Rust Preventative 2-Part Epoxy Primer
- Standard Colors: Red, Black, White and CAT Yellow

OPTIONS

- 10-Year Galvanized Structural Warranty (2-Year Painted)
- 13 HP HONDA Engine Hydraulic Power Pack Comes STANDARD w/ ENGINE COVER, 15 Gallon Reservoir, Replaceable Oil Filter, Pressure Gauge and Solar Fade Resistant Plastic Control Placard. (Electric Start Optional)
- 3,300 ft/lbs Torque Hydraulic Take-up Retriever. (Motor Spooled w/ Reel Brake ILO Cross-Over Relief Valve for Smooth Instant Reel Stoppage)
- 2-7/16" Universal Adapter for Capstan and Power Reel Attachments
- 7 Inch General Purpose Capstan
- Collapsible Power Reel
- 12" Bronze Alloy Reel Brake
- 16" Bronze Alloy Ventilated Reel Brake
- Hydraulic Hand Pump, Accumulator, and Pressure Gauge. Smooth Operation and Consistent Brake Pressure. (Pairs with the 16" Reel Brake)
- Conical Package for 2-1/2" Reel Bars
 - "Precision Machined" CONICAL centering collar w/ lift lug (Yellow Zinc Plated)
 - Removable sliding "Precision Machined" CONICAL drive bar cone (Yellow Zinc Plated)
- Rotating Safety Ground for 2-1/2" Reel Bars
 - Precision Machined w/ Ball Bearings
 - Tin Plated Copper 5/8" Premium Ground Lug
 - Star Washer Secured for Good Grounding Connection
- Reel Adapters Available for Larger Reel Arbor Holes
- All Stainless Steel Fasteners (1/2" and under)



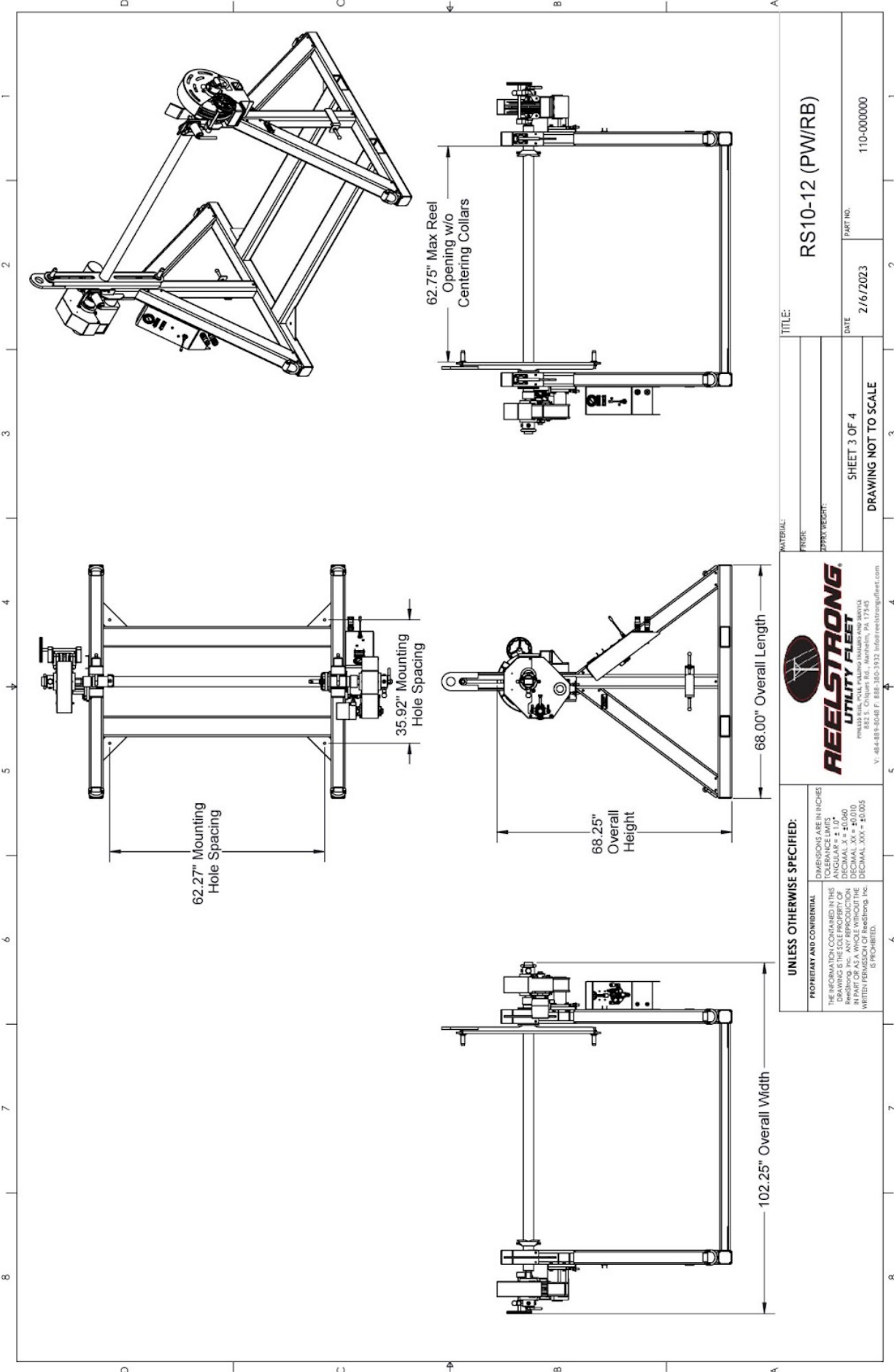
TITLE:		RS10-12 (DIRB)	
MATERIAL:	FINISH:	DATE:	PART NO.
		2/16/2023	1110-000000
APPROX WEIGHT:		DRAWING NOT TO SCALE	
SHEET 4 OF 4			

REELSTRONG
UTILITY FLEET

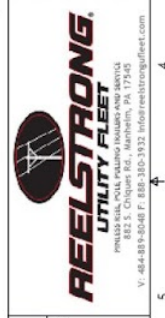
822 S. Chiquita Rd., Marthasville, PA 17540
V: 484-889-8048 F: 888-380-3932 info@reelstrongfleet.com

UNLESS OTHERWISE SPECIFIED:
DIMENSIONS ARE IN INCHES
TOLERANCE LIMITS:
FRACTIONS: ±0.005
DECIMAL: ±0.010
DECIMAL: .XXX ±0.005
DECIMAL: .XXX ±0.005

PROPRIETARY AND CONFIDENTIAL
THE INFORMATION CONTAINED IN THIS DRAWING IS THE SOLE PROPERTY OF REELSTRONG, INC. ANY REPRODUCTION OR TRANSMISSION IN ANY FORM OR BY ANY MEANS WITHOUT THE WRITTEN PERMISSION OF REELSTRONG, INC. IS PROHIBITED.



TITLE: RS10-12 (PW/RB)	
MATERIAL:	
FINISH:	
DRY WEIGHT:	
DATE: 2/16/2023	PART NO. 110-000000
SHEET 3 OF 4	
DRAWING NOT TO SCALE	



UNLESS OTHERWISE SPECIFIED:
 DIMENSIONS ARE IN INCHES
 TOLERANCE LIMITS:
 ANGULAR ± 1.0°
 DECIMAL ± 0.015
 DECIMAL .XX ± 0.010
 DECIMAL .XXX ± 0.005
 IS PROHIBITED.

PROPRIETARY AND CONFIDENTIAL
 THE INFORMATION CONTAINED IN THIS DRAWING IS THE SOLE PROPERTY OF REELSTRONG, INC. ANY REPRODUCTION OR TRANSMISSION OF THIS DRAWING WITHOUT THE WRITTEN PERMISSION OF REELSTRONG, INC. IS PROHIBITED.