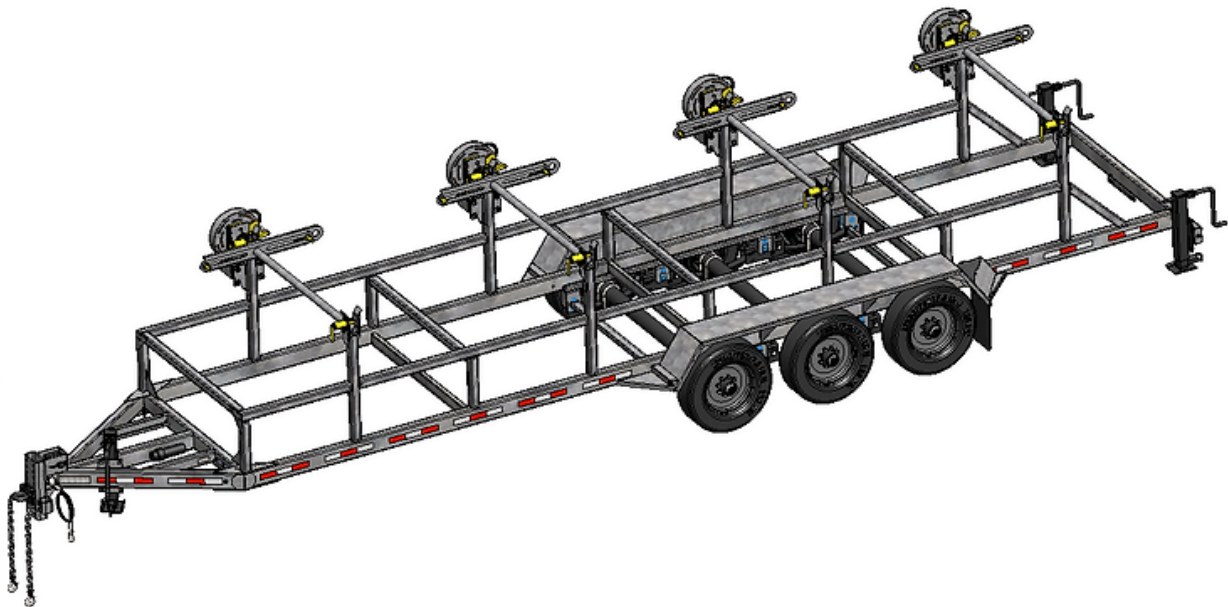


REELSTRONG®

UTILITY FLEET

MRST4 POWERLOCK™ REEL TRAILER SPECS



EXCLUSIVE STANDARD ADDED VALUE:

- POWERLOCK™ Technology Provides Industry Leading Safety, Ease of Use, Low Maintenance and Durability.
 - SAFETY and Peace of Mind
 - No Pins, Cotters, or Lanyards that Secure the Reel Arbor (which is the most critical safety point).
 - Faster Reel Loading, Unloading, and Deployment Reduces Labor Costs and Fatigue on Workers.

BUILT FOR SAFETY. BUILT FOR SPEED. BUILT TO LAST.

CAPACITIES

- MRST4-84-60: 41,400 lbs. GVWR @ 15% Tongue Weight

AXLES

- MRST4-84-60: Triple 12K lbs. Sprung

WHEELS

- MRST4-84-60: (6) 17.5 x 6.75 HC / 8 on 6.5 BC w/ 0.19 Inset

TIRES

- MRST4-84-60: (6) 235/75R17.5 LR-H Tires

BRAKES

- MRST4-84-60: 12.25" x 5.00" Electric w/ Safety Breakaway Kit

PAYLOAD: ALL FINAL PAYLOADS BASED ON CHOSEN MODEL AND OPTIONS**REEL WEIGHT (PAYLOAD)**

- MRST4-84-60: 34,000 lbs. (8,500 lbs. per Reel)

REEL DIAMETER

- MRST4-84-60: (4) 84" Maximum

REEL WIDTH: 60" Maximum

REEL SHAFT DIAMETER: 2.50" Tube w/ Centering Collars

OVERALL LENGTH: See Drawing.

OVERALL WIDTH: See Drawing.

OVERALL WEIGHT

- MRST4-84-60: 7,400 lbs. Approx.
(Actual Trailer Weight will Vary with Options & Finishes Chosen)

STANDARD FEATURES

- POWERLOCK™ Technology Provides Industry Leading Safety, Ease of Use, Low Maintenance and Durability.
- Oil Bath Hubs (Greaseable Option All)
- Electric Brakes
- Wheel Chock Holders

STANDARD TRAILER BODY

- Heavy Duty 6" X 3" X ¼"
- 7-Position Adjustable Hitch
- ½" X 36" GR70 Yellow Zinc Safety Chains with Hooks
- 12,000 lbs. Static Front Jack w/ Spring Return
- Ground Lug: Copper Alloy Bolted to Frame
- Fenders: ⅛" Tread Plate
- A-frame: Approx. 5' Long

WIRING

- DOT / ICC Approved LED Lights and Conspicuity Reflective Tape
- FMVSS / CMVSS Standard 108 LED Lighting
- Sealed Beam, Rubber Mounted Stop, Turn, Tail and Marker Lights
- 100% Sealed Heat-Shrunked Wiring Connections w/ Full Loom
- Breakaway Kit with Absorbed Glass Mat (AGM) Battery

PAINT

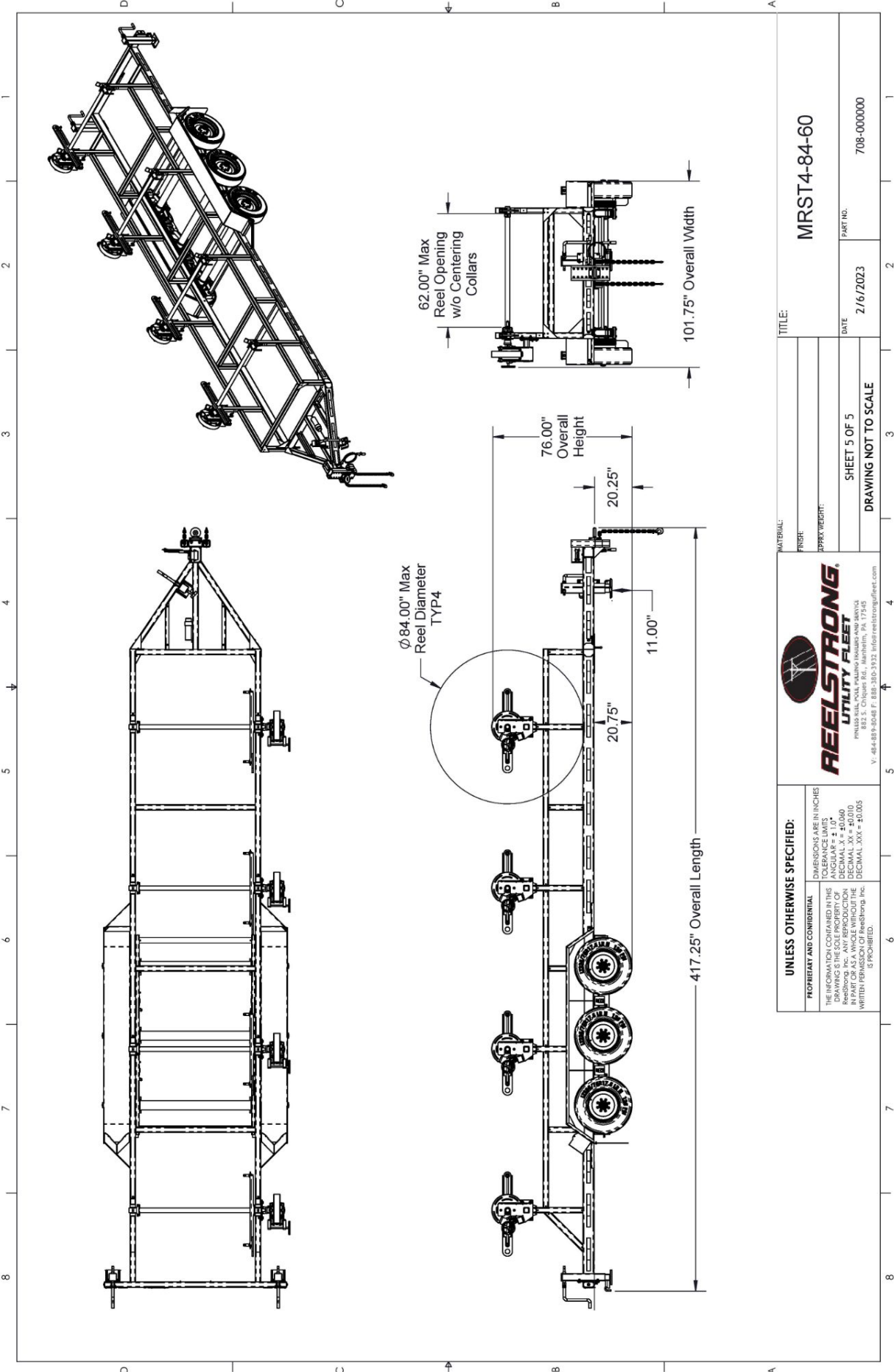
- Biodegradable Pretreat Acid Cleaning
(Superior to re-used sandblasting material that can impregnate metals with oil)
- Seams Caulked
- Rust Preventative 2-Part Epoxy Primer
- Standard Colors: Red, Black, White and CAT Yellow

OPTIONS

- 10-Year Galvanized Structural Warranty (2-Year Painted)
- 13 HP HONDA Engine Hydraulic Power Pack Comes STANDARD w/ ENGINE COVER, 15 Gallon Reservoir, Replaceable Oil Filter, Pressure Gauge and Solar Fade Resistant Plastic Control Placard. (Electric Start Optional)
- 3,300 or 4,800 ft/lbs Torque Hydraulic Take-up Retriever. (*Motor Spooled w/ Reel Brake ILO Cross-Over Relief Valve for Smooth Instant Reel Stoppage*)
- 2-7/16" Universal Adapter for Capstan and Power Reel Attachments
- 7 Inch General Purpose Capstan
- Collapsible Power Reel
- Rotating Arbor Ground
- Auxiliary Hydraulic Quick-Connect Ports
- Rewind Leveler
- 16" Bronze Alloy Ventilated Reel Brake w/ Ventilated Guard
- 16" Long 6-Bolt Hitch Extension (w/ 52" Safety Chains and Breakaway Cable Extension)
- Aluminum or Steel Toolbox
- 10K-HD / 15K / 20K Axles Available w/ Air Brakes
- Anti-Lock Brakes (ABS)
- Wiring Connections Soldered and Sealed w/ Heat Shrink Tubing

OPTIONS (cont.)

- Plug-and-Play Sealco Wiring Harness
- Wheel Chocks: Rubber or All Weather Galvanized Grip Strut
- Spare Tire and Mount
- Solar Charged Breakaway Kit
- Strobe Warning Lights
- All Stainless Steel Fasteners (½” and under)
- Hydraulic Front Jack
- Rear Underground Fairlead Roller Attachment
- Truck-Lite Lighting
- Lug Nut Indicators



UNLESS OTHERWISE SPECIFIED: PROPRIETARY AND CONFIDENTIAL THE INFORMATION CONTAINED IN THIS DRAWING IS THE SOLE PROPERTY OF REELSTRONG UTILITY FLEET INC. NO PART OF THIS DRAWING IS TO BE REPRODUCED OR TRANSMITTED IN ANY FORM OR BY ANY MEANS, ELECTRONIC OR MECHANICAL, INCLUDING PHOTOCOPYING, RECORDING, OR BY ANY INFORMATION STORAGE AND RETRIEVAL SYSTEM, WITHOUT THE WRITTEN PERMISSION OF ReelStrong, Inc. IS PROHIBITED.		DIMENSIONS ARE IN INCHES TOLERANCE LIMITS: DECIMAL .XX = +0.010 DECIMAL .XXX = +0.005	
REELSTRONG UTILITY FLEET 822 S. Colburn Rd., Mahan, PA, 17245 V: 484-889-8048 F: 888-380-3932 info@reelstrongfleet.com		MATERIAL: FINISH: APPROX WEIGHT:	
TITLE: MRST4-84-60		PART NO.: 708-000000	
SHEET 5 OF 5 DRAWING NOT TO SCALE		DATE: 2/16/2023	