

REELSTRONG®

UTILITY FLEET

LA108 ACME-CLAMP™ SELF-PROPELLED PULLER REEL TRAILER SPECS



EXCLUSIVE STANDARD ADDED VALUE:

- ACME-CLAMP™ Technology Provides Industry Leading Safety, Ease of Use, Low Maintenance and Durability.
- Low Center of Gravity to Prevent Roll-Over.
- Wider Outriggers over all Competition.
- Ultra-Smooth Gradual Ramp-Up Proportional Hydraulic Functions (no hard banging)
- Backup Hydraulics are Full Manual Override to Ensure Functions Work if an Electric Failure Occurs to the Remote Control System During Operation.
- Patent Pending Acme-Rod Swing-Out Traversing Fairlead Option (Low-Cost alternative to \$300K+ Competition)

BUILT FOR SAFETY. BUILT FOR SPEED. BUILT TO LAST.

CAPACITIES

- LA108-16: 34,500 lbs. GVWR @ 15% Tongue Weight

AXLES

- LA108-16: Tandem 15K lbs. Sprung

WHEELS (per axle)

- LA108-16: (4) 19.5 x 8.25 RW / 8 on 275mm BC w/ 0.63 Outset

TIRES (per axle)

- LA108-16: (4) ST-285/70R19.5 LR-H Tires

BRAKES (per axle)

- LA108-16: 12.25" x 5.00" Electric w/ Safety Breakaway Kit

WHEELS (per nose wheel)

- LA108-16: (1) 16.5 x 8.25 RW / 8 on 8.86 BC w/ 0.63 Outset

TIRES (per nose wheel)

- LA108-16: (1) 10-16.5 124e Tire, 10 Ply

PAYLOAD: ALL FINAL PAYLOADS BASED ON CHOSEN MODEL AND OPTIONS

REEL WEIGHT (PAYLOAD): 16,000 lbs.

REEL DIAMETER: 48" Minimum and 108" Maximum

REEL WIDTH: 68" Maximum

REEL SHAFT DIAMETER: 3.00" Solid w/ 4.00" and 5.00" Adapters

OVERALL LENGTH: 217" Approx.

OVERALL WIDTH: 102"

OVERALL WEIGHT: Actual Trailer Weight will Vary with Options & Finishes Chosen.

STANDARD FEATURES

- ACME-CLAMP™ Technology Provides Industry Leading Safety, Ease of Use, Low Maintenance and Durability.
- Oil Bath Hubs (Greaseable Option All)
- Electric Brakes

—All specifications / designs are subject to change without notice - All GVWR and reel capacities are de-rateable to your needs.

STANDARD FEATURES (cont.)

- Wheel Chock Holders
- Direct Reel Drive Torque - 250,000 in/lbs
- Variable Reel Drive Speed from 0 to 12 RPM
- Trailer Propulsion Speed 0 to 1.5 MPH
- Primary Functions Operated from Radio Remote or Coiled Tether. (Manual Override, Possible, if Necessary)
- Spring-Applied Hydraulic Cylinders Release Brakes Automatically when Unit is being Self-Propelled.
- 4-Cylinder Liquid-Cooled Kubota Diesel Engine 66.8 HP @ 2,600 RPM, Direct Drive Coupled to 21 GPM Hydraulic Pump
- Front of Trailer is Raised and Lowered by Hydraulics via Drive Wheel to Aid in Connecting & Disconnecting of Trailer, 12K Jack Provided for Back-up.
- Hydraulic Telescoping Outriggers
- Backup Hydraulics are Full Manual Override to Ensure Functions Work if an Electric Failure Occurs to the Remote Control System During Operation. (No Electrically Actuated Functions on the Machine Itself.)
- Air Brake or Electric Brake Option Release Brakes Automatically when Unit is being Self-Propelled. Prevents Trailer Roll-Away.
- Anti-Lock Brake System (ABS) on Front Axle
- 2-7/16" Universal Adapter for Capstan and Power Reel Attachment

FUNCTIONAL DESCRIPTION

- Direct Drive Reel Engagement for Positive Pull-In / Pay-Out. No Rim Drive Slippage.
- Reel Drive Capable of 250,000 in-lb of Torque for Tough Jobs.
- Reel Loaded and Rotated w/o the Need of Ultra-Heavy, Time-Consuming Arbor Bars
- Direct Drive Reel Rotation via Powerful yet Simple, Low-Maintenance Poclain Hydraulic Motors Mounted on Loading Arm
- Loading Arms Hydraulically Adjust to Reel Diameter and the Width is Adjusted via ACME Threaded Rod Design, Whereas if any Hydraulic Hoses to Mechanism are Damaged, it is Impossible for Lift Arm Clamp to Open and Cause Death or Injury.
- Remove and Install Cable Through Complete Range of Lift Arm Motion.
- Primary Functions Operated from Radio Remote, Manual Override Possible Only if necessary.
- Self-Propelled Hydraulic Nose Wheel Lift and Outriggers Only Operated from Machine for Less Likely Occurrence of Operator Remotely Shifting Outrigged Position Accidentally.

DRIVE SPECIFICATIONS

- Capstan (13CDUCBC1B)
 - 13,000 in/lbs- 7" Diameter: 3,250 lb Max Line Pull
- Drum Drive (2x MSE 18-2 171 CID Motors)
 - Torque Lb-IN at 100% Efficiency and 5,000 PSI, 272,155
 - Line Pull (LBS-Force) at 108" Diameter, 5,040

DRIVE SPECIFICATIONS (cont.)

- Line Pull (LBS-Force) at 48" Diameter, 11,340
- Nose Wheel Drive (MSE11-02 , 102.9 CID)
 - Torque Lb-IN at 100% Efficiency and 5,000, 81,885
 - Note: Nose Wheel Spins at 3,200 PSI with No Reel
 - Drawbar Pull (LBS-Force) at 5,000 PSI, nominal Nose Wheel Diameter 30.9", 5,300.

STANDARD TRAILER BODY

- Heavy Duty 10" X 2" X ¼" Frame
- 6-Position Adjustable Hitch
- ½" X 42" GR70 Yellow Zinc Safety Chains with Hooks
- 12,000 lbs. Static Front Jack w/ Spring Return
- Ground Lug: Copper Alloy Bolted to Frame
- Fenders: ⅛" Plate
- Quick Deploy Outriggers (no loose pins)
- Spring Plunger Accessory Engagement

WIRING

- DOT / ICC Approved LED Lights and Conspicuity Reflective Tape
- FMVSS / CMVSS Standard 108 LED Lighting
- Sealed Beam, Rubber Mounted Stop, Turn, Tail and Marker Lights
- Plug-and-Play Sealco Wiring Harness
- Breakaway Kit with Absorbed Glass Mat (AGM) Battery

PAINT

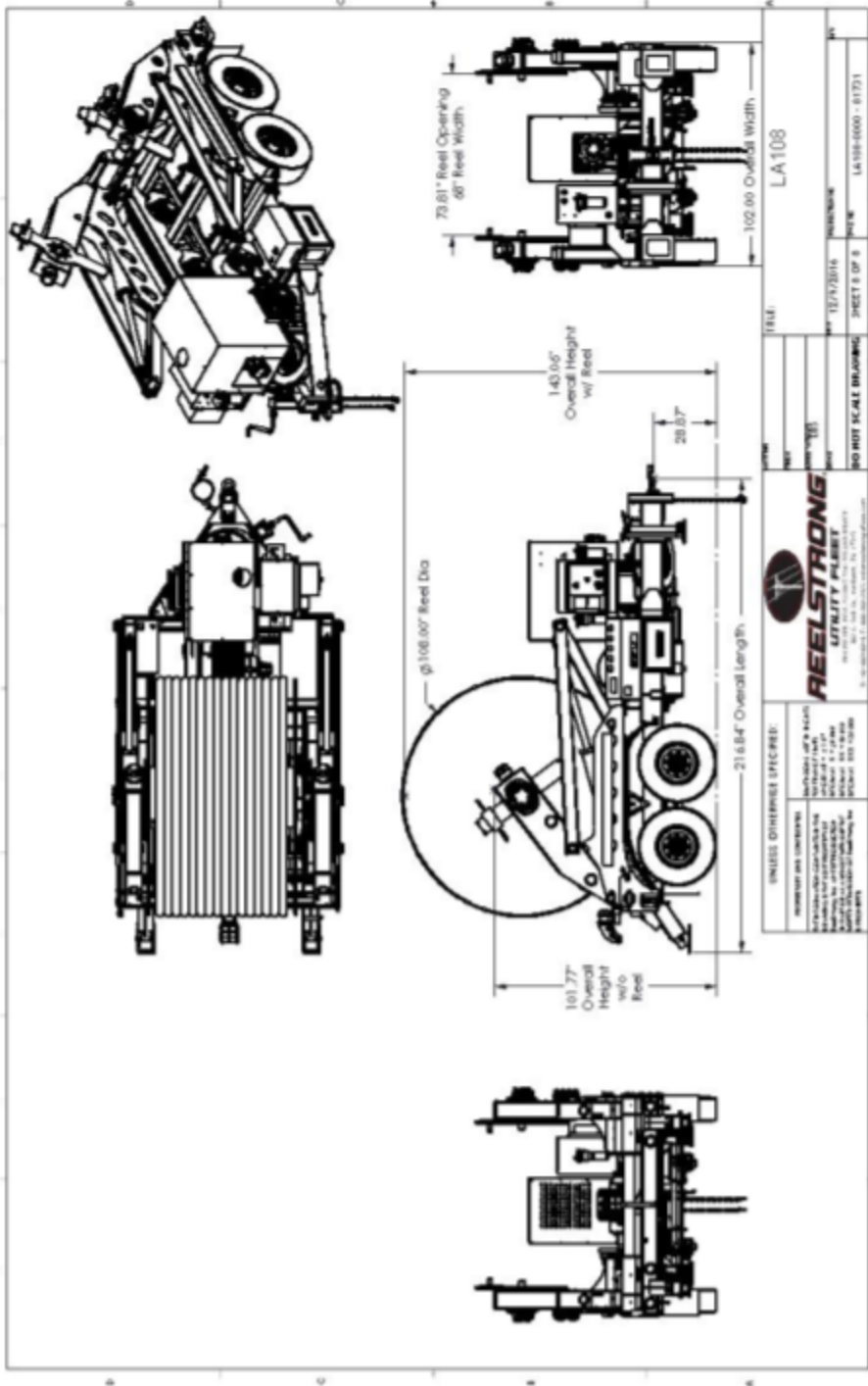
- I.M.P.A.C.T Intense Metal pH Acid Cleaning Technology
- Hydrofluoric, Sulfuric, Phosphoric ACID Blend Cleaning Preparation (Re-used sandblasting material can impregnate metals with oil)
- Seams Caulked
- Rust Preventative 2-Part Epoxy Primer
- Standard Colors: Red, Black, White and CAT Yellow

OPTIONS

- 10-Year Galvanized Structural Warranty (2-Year Painted)
- 7 Inch General Purpose Capstan
- Collapsible Power Reel
- Auxiliary Hydraulic Quick-Connect Ports
- Rewind Leveler
- 16" Hitch Extension
- Aluminum or Steel Toolbox
- Anti-Lock Brakes (ABS)

OPTIONS (cont.)

- Air Brakes
- 3" Lunette Eye
- Wiring Connections Soldered and Sealed w/ Heat Shrink Tubing
- Wheel Chocks: Rubber or All Weather Galvanized Grip Strut
- Spare Tire and Mount
- Solar Charged Breakaway Kit
- Strobe Warning Lights
- All Stainless Steel Fasteners (1/2" and under)
- 110 VAC Generator
- Hydraulic Capstan Adapter
- Overhead Puller
- Pilot Line Winder



UNLESS OTHERWISE SPECIFIED:		 FEELSTRONG UTILITY FILBERT 1011 W. 10th Street, Ft. Worth, TX 76104 817-342-1111	
DIMENSIONS AND CONVERSIONS: DIMENSIONS ARE IN INCHES DECIMALS ARE TO THIRDS UNLESS NOTED OTHERWISE FRACTIONS ARE TO 1/32 UNLESS NOTED OTHERWISE ANGLES ARE TO NEAREST MINUTE UNLESS NOTED OTHERWISE TOLERANCES ARE TO NEAREST THOUSTH UNLESS NOTED OTHERWISE	TITLE: _____ DATE: _____ DRAWN BY: _____ CHECKED BY: _____ PROJECT NO.: _____ SHEET NO. OF _____ PROJECT NAME: _____ LA108-0000 - 01701	DO NOT SCALE DRAWING	