

REELSTRONG®

UTILITY FLEET

CP10 DOUBLE REEL COIL PIPE TRAILER SPECS



EXCLUSIVE STANDARD ADDED VALUE:

- Industry Leading Safety, Ease of Use, Low Maintenance and Durability.
- Floating Spindle Turret Allows for Adjustability from 28" ID to 83" ID
- Turntable Holds Coils with a Height up to 48"
- (4) Turret Rollers Per Turret for Enhanced Stability and Smoother Operation
- Brake Easily Engages by Pulling a Hand Lever
- Low Center of Gravity
- Great Price

BUILT FOR SAFETY. BUILT FOR SPEED. BUILT TO LAST.

CAPACITIES

- CP10: 10,000 lbs. GVWR

AXLES

- CP10: Tandem 5.2K lbs. Torsion

WHEELS

- CP10: (4) 16 x 6K / 6 on 5.5 BC w/ Zeraset

TIRES

- CP10: (4) ST-235/80R16 LR-D Tires

BRAKES

- CP10: 12.00" x 2.00" Electric w/ Safety Breakaway Kit

PAYLOAD: ALL FINAL PAYLOADS BASED ON CHOSEN MODEL AND OPTIONS

COIL WEIGHT (PAYLOAD)

- CP10: 6,600 lbs. Approx.

COIL HEIGHT (from turntable): 48"

COIL DIAMETER: Fabricated ID Spokes with "Floating" Spindle 28"-83" ID Adjustability

OVERALL LENGTH: 255" Approx.

OVERALL WIDTH: 96" Approx.

CURB WEIGHT:

- CP10: 3,400 lbs. Approx.

Actual Trailer Weight will Vary with Options & Finishes Chosen.

STANDARD FEATURES

- Industry Leading Safety, Ease of Use, Low Maintenance and Durability.
- Oil Bath Hubs (Greaseable Option)
- Wheel Chock Holders
- (4) Removable Vertical Outside Diameter Posts w/ PVC Guard Per Turret
- Floating Spindle Turrets Allow for Adjustability from 28" ID to 83"
- Turntables Hold Coils with a Height up to 48"
- Turntable Brakes Easily Engages by Pulling a Hand Lever
- (4) Turret Max-Roller™ Rollers Per Turret for Enhanced Stability and Smoother Operation
- 2.50" Lunette Eye

STANDARD FEATURES (cont.)

- 8,000 lbs. Static Front Jack

STANDARD TRAILER BODY

- Heavy Duty 6" Channel Frame
- 6-Position Adjustable Hitch
- 3/8" X 36" GR70 Yellow Zinc Safety Chains with Hooks
- Fenders: 1/8" Plate

WIRING

- DOT / ICC Approved LED Lights and Conspicuity Reflective Tape
- FMVSS / CMVSS Standard 108 LED Lighting
- Sealed Beam, Rubber Mounted Stop, Turn, Tail and Marker Lights
- 100% Sealed Heat-Shrunked Wiring Connections w/ Full Loom
- Breakaway Kit with Absorbed Glass Mat (AGM) Battery

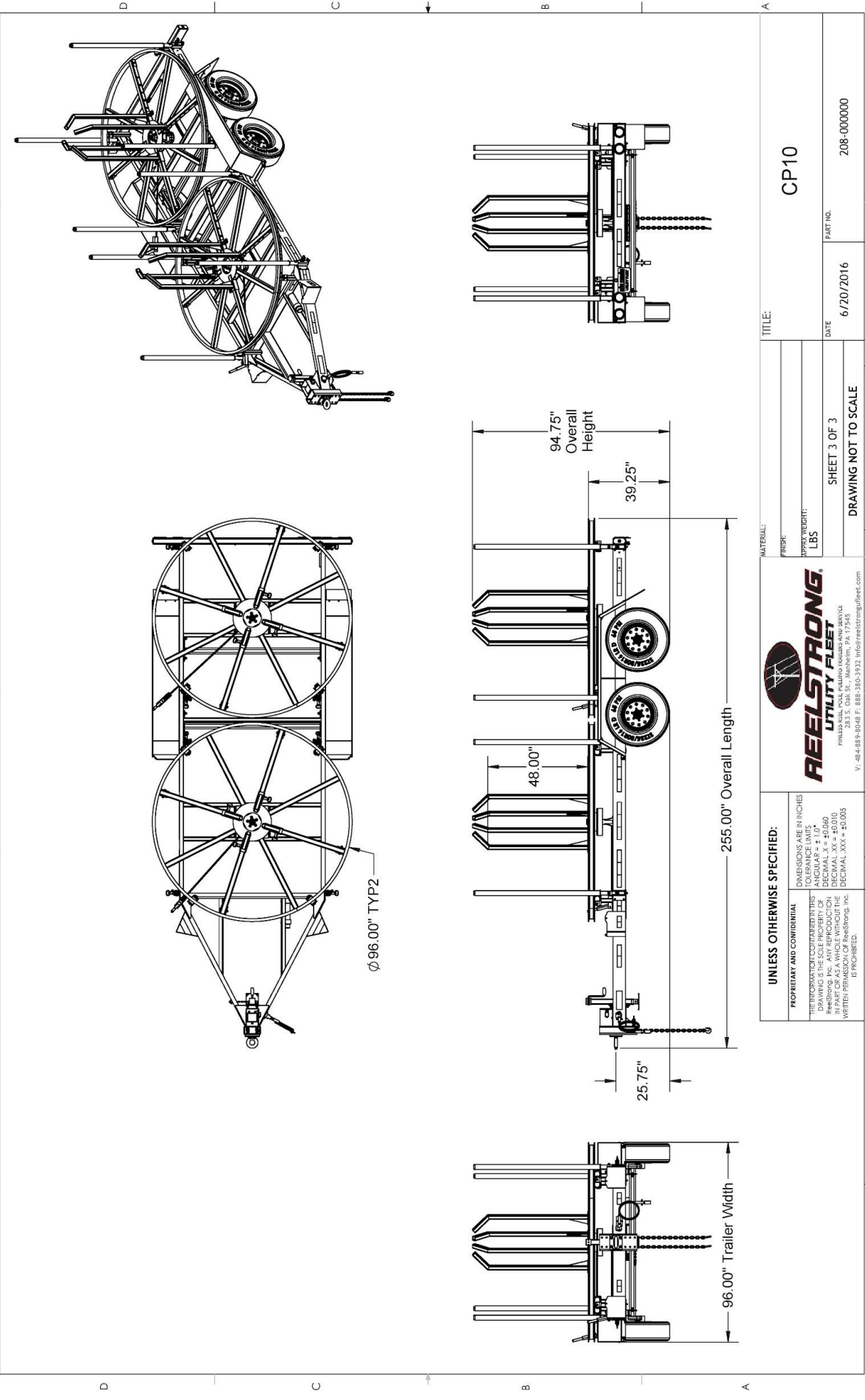
PAINT

- Biodegradable Pretreat Acid Cleaning
(Superior to re-used sandblasting material that can impregnate metals with oil)
- Seams Caulked
- Rust Preventative 2-Part Epoxy Primer
- Standard Colors: Red, Black, White and CAT Yellow

OPTIONS

- 10-Year Galvanized Structural Warranty (2-Year Painted)
- Aluminum or Steel Toolbox
- 16" Long 6-Bolt Hitch Extension (w/ 52" Safety Chains and Breakaway Cable Extension)
- 3" Lunette Eye
- Solar Charged Breakaway Kit
- Wiring Connections Soldered and Sealed w/ Heat Shrink Tubing
- Plug-and-Play Sealco Wiring Harness
- Wheel Chocks: Rubber or All Weather Galvanized Grip Strut
- Spare Tire and Mount
- All Stainless Steel Fasteners (1/2" and under)
- Line Tamer / Pipe Straightener w/ Radial Articulating Arm
- Tracer Wire Holder
- Truck-Lite Lighting
- Lug Nut Indicators

1 2 3 4 5 6 7 8



TITLE:		CP10
MATERIAL:		
FINISH:		
GROSS WEIGHT:		
LBS:		
DATE:	6/20/2016	PART NO. 208-000000
SHEET 3 OF 3		
DRAWING NOT TO SCALE		

UNLESS OTHERWISE SPECIFIED:
 DIMENSIONS ARE IN INCHES
 TOLERANCE LIMITS
 DECIMAL .XX = +0.060
 DECIMAL .XX = +0.010
 DECIMAL .XXX = +0.005
 IS PROHIBITED.



PROPRIETARY AND CONFIDENTIAL
 THE INFORMATION CONTAINED IN THIS DRAWING IS THE SOLE PROPERTY OF REELSTRONG, INC. ANY REUSE OR REPRODUCTION IN PART OR AS A WHOLE WITHOUT THE WRITTEN PERMISSION OF REELSTRONG, INC. IS PROHIBITED.

MATERIAL:		
FINISH:		
GROSS WEIGHT:		
LBS:		
DATE:	6/20/2016	PART NO. 208-000000
SHEET 3 OF 3		
DRAWING NOT TO SCALE		