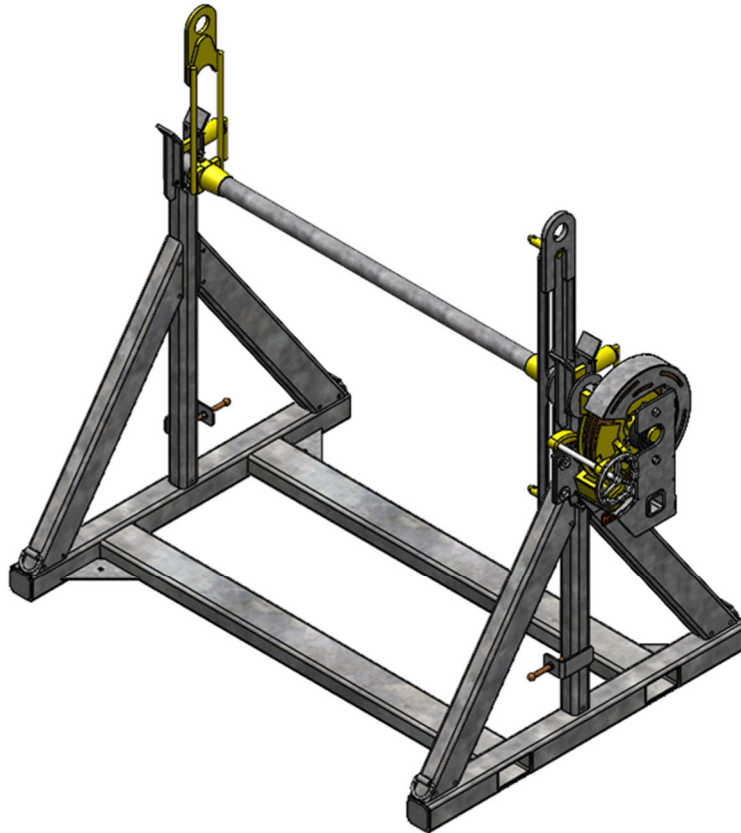


REELSTRONG[®]

UTILITY FLEET

RS5-8 POWERLOCK™ REEL STAND SPECS



EXCLUSIVE STANDARD ADDED VALUE:

- POWERLOCK™ Technology Provides Industry Leading Safety, Ease of Use, Low Maintenance and Durability.
 - SAFETY and Peace of Mind
 - No Pins, Cotters, or Lanyards that Secure the Reel Arbor (which is the most critical safety point).
 - Faster Reel loading, Unloading, and Deployment Reduces Labor Costs and Fatigue on Workers.
- No Tools Required to Replace Reels

BUILT FOR SAFETY. BUILT FOR SPEED. BUILT TO LAST.

MAX REEL CAPACITY (customizable)

- Diameter: 96"
- Width: 60"
- Weight: 8,000 lbs.

ARBOR BAR: 2.5" w/ Centering Collar (Optional Reel Adapters Available for Larger Arbor Holes)

DIMENSIONS (customizable)

- Length: 56.5"
- Width: 75.50"
- Height: 59.25" w/o Reel
- Weight: 850 lbs.

Actual Reel Stand Weight will Vary with Options & Finishes Chosen.

STANDARD FEATURES

- POWERLOCK™ Technology Provides Industry Leading Safety, Ease of Use, Low Maintenance and Durability.
- Arbor Assembly Lifts Out of Brake Dog w/o Side-Shifting the Arbor to Disengage
- No Tools Required to Replace Reels
- (2) Ground Lugs: Copper Alloy Bolted to Frame

CONSTRUCTION

- Reinforced Truss on Rectangular Base Frame
- Steel Tube Frame Continuously Welded
- D-Rings Located on Each Corner for Tie Down

PAINT

- I.M.P.A.C.T Intense Metal pH Acid Cleaning Technology
- Hydrofluoric, Sulfuric, Phosphoric ACID Blend Cleaning Preparation (Re-used sandblasting material can impregnate metals with oil)
- Rust Preventative 2-Part Epoxy Primer
- Standard Colors: Red, Black, White and CAT Yellow

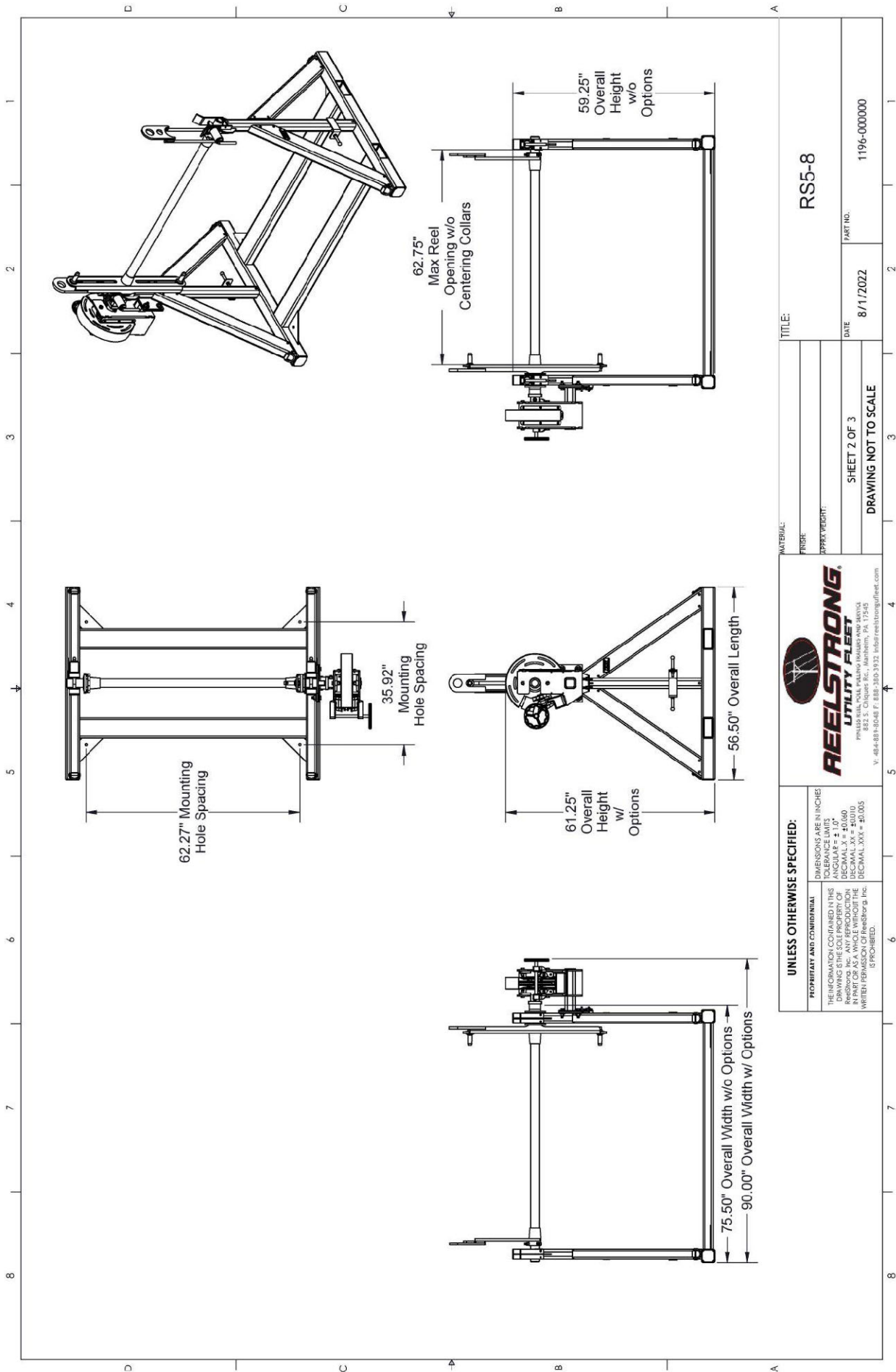
OPTIONS

- 10-Year Galvanized Structural Warranty (2-Year Painted)
- 13 HP HONDA Engine Hydraulic Power Pack Comes STANDARD w/ ENGINE COVER, 15 Gallon Reservoir, Replaceable Oil Filter, Pressure Gauge and Solar Fade Resistant Plastic Control Placard. (Electric Start Optional)
- 3,300 ft/lbs Torque Hydraulic Take-up Retriever. (Motor Spooled w/ Reel Brake ILO Cross-Over Relief Valve for Smooth Instant Reel Stoppage)
- 2-7/16" Universal Adapter for Capstan and Power Reel Attachments
- 7 Inch General Purpose Capstan
- Collapsible Power Reel
- 12" Bronze Alloy Reel Brake

—All specifications / designs are subject to change without notice - All GVWR and reel capacities are de-rateable to your needs.

OPTIONS (cont.)

- 16" Bronze Alloy Ventilated Reel Brake
- Hydraulic Hand Pump, Accumulator, and Pressure Gauge. Smooth Operation and Consistent Brake Pressure. (Pairs with the 16" Reel Brake)
- Conical Package for 2-1/2" Reel Bars
 - "Precision Machined" CONICAL centering collar w/ lift lug (Yellow Zinc Plated)
 - Removable sliding "Precision Machined" CONICAL drive bar cone (Yellow Zinc Plated)
- Rotating Safety Ground for 2-1/2" Reel Bars
 - Precision Machined w/ Ball Bearings
 - Tin Plated Copper 5/8" Premium Ground Lug
 - Star Washer Secured for Good Grounding Connection
- Reel Adapters Available for Larger Reel Arbor Holes
- All Stainless Steel Fasteners (1/2" and under)



TITLE: **RS5-8**

PART NO. 1196-00000

DATE 8/1/2022

SHEET 2 OF 3

DRAWING NOT TO SCALE

MATERIAL:

FINISH:

APPROX WEIGHT:



UNLESS OTHERWISE SPECIFIED:

PROPRIETARY AND CONFIDENTIAL

THE INFORMATION CONTAINED IN THIS DRAWING IS THE SOLE PROPERTY OF REELSTRONG UTILITY FLUET, INC. AND IS TO BE USED ONLY FOR THE PROJECT AND SITE SPECIFICALLY IDENTIFIED HEREIN. ANY REUSE OR REPRODUCTION WITHOUT THE WRITTEN PERMISSION OF ReelStrong, Inc. IS PROHIBITED.

DIMENSIONS ARE IN INCHES

TOLEANCE LIMITS

FRACTIONAL .XX = ±0.005

DECIMAL .XX = ±0.010

IN PART OR AS A WHOLE WITHOUT THE WRITTEN PERMISSION OF ReelStrong, Inc. IS PROHIBITED.

DECIMAL .XXX = ±0.005