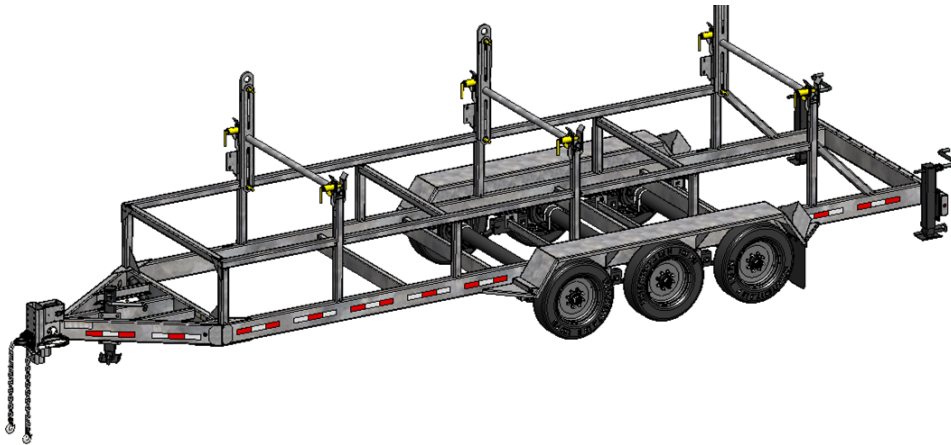


REELSTRONG[®]

UTILITY FLEET

MRST3 POWERLOCK™ REEL TRAILER SPECS



EXCLUSIVE STANDARD ADDED VALUE:

- POWERLOCK™ Technology Provides Industry Leading Safety, Ease of Use, Low Maintenance and Durability.
 - SAFETY and Peace of Mind
 - No Pins, Cotters, or Lanyards that Secure the Reel Arbor (which is the most critical safety point).
 - Faster Reel Loading, Unloading, and Deployment Reduces Labor Costs and Fatigue on Workers.

BUILT FOR SAFETY. BUILT FOR SPEED. BUILT TO LAST.

CAPACITIES

- MRST3-84-60: 34,000 lbs. GVWR @ 15% Tongue Weight
- MRST3-96-60: 33,150 lbs. GVWR @ 15% Tongue Weight

AXLES

- MRST3-84-60: Tandem 15K lbs. Sprung
- MRST3-96-60: Triple 10K lbs. Sprung

WHEELS

- MRST3-84-60: (4) 19.5 x 6.75 HC / 8 on 275mm BC w/ 0.63 Outset
- MRST3-96-60: (6) 17.5 x 6.75 HC / 8 on 6.5 BC w/ 0.19 Inset

TIRES

- MRST3-84-60: (4) 285/70R19.5 18 Ply Tires
- MRST3-96-60: (6) 215/75R17.5 LR-H Tires

BRAKES

- MRST3-84-60: 12.25" x 5.00" Electric w/ Safety Breakaway Kit
- MRST3-96-60: 12.25" x 3.38" Electric w/ Safety Breakaway Kit

PAYLOAD: ALL FINAL PAYLOADS BASED ON CHOSEN MODEL AND OPTIONS

REEL WEIGHT (PAYLOAD)

- MRST3-84-60: 27,000 lbs. (9,000 lbs. per Reel)
- MRST3-96-60: 27,000 lbs. (9,000 lbs. per Reel)

REEL DIAMETER

- MRST3-84-60: (3) 84" Maximum
- MRST3-96-60: (3) 96" Maximum

REEL WIDTH: 60" Maximum

REEL SHAFT DIAMETER: 2.50" Tube w/ Centering Collars

OVERALL LENGTH: See Drawing.

OVERALL WIDTH: See Drawing.

OVERALL WEIGHT

- MRST3-84-60: 5,500 lbs. Approx.
 - MRST3-96-60: 5,600 lbs. Approx.
- (Actual Trailer Weight will Vary with Options & Finishes Chosen)

STANDARD FEATURES

- POWERLOCK™ Technology Provides Industry Leading Safety, Ease of Use, Low Maintenance and Durability.
- Oil Bath Hubs (Greaseable Option All)
- Electric Brakes
- Wheel Chock Holders

STANDARD TRAILER BODY

- Heavy Duty 8" X 3" X ¼"
- 9-Position Adjustable Hitch (MRST3-84-60)
- 7-Position Adjustable Hitch (MRST3-96-60)
- ½" X 36" GR70 Yellow Zinc Safety Chains with Hooks
- 12,000 lbs. Static Front Jack w/ Spring Return
- Ground Lug: Copper Alloy Bolted to Frame
- Fenders: ⅛" Tread Plate
- A-frame: Approx. 5' Long

WIRING

- DOT / ICC Approved LED Lights and Conspicuity Reflective Tape
- FMVSS / CMVSS Standard 108 LED Lighting
- Sealed Beam, Rubber Mounted Stop, Turn, Tail and Marker Lights
- 100% Sealed Heat-Shrunked Wiring Connections w/ Full Loom
- Breakaway Kit with Absorbed Glass Mat (AGM) Battery

PAINT

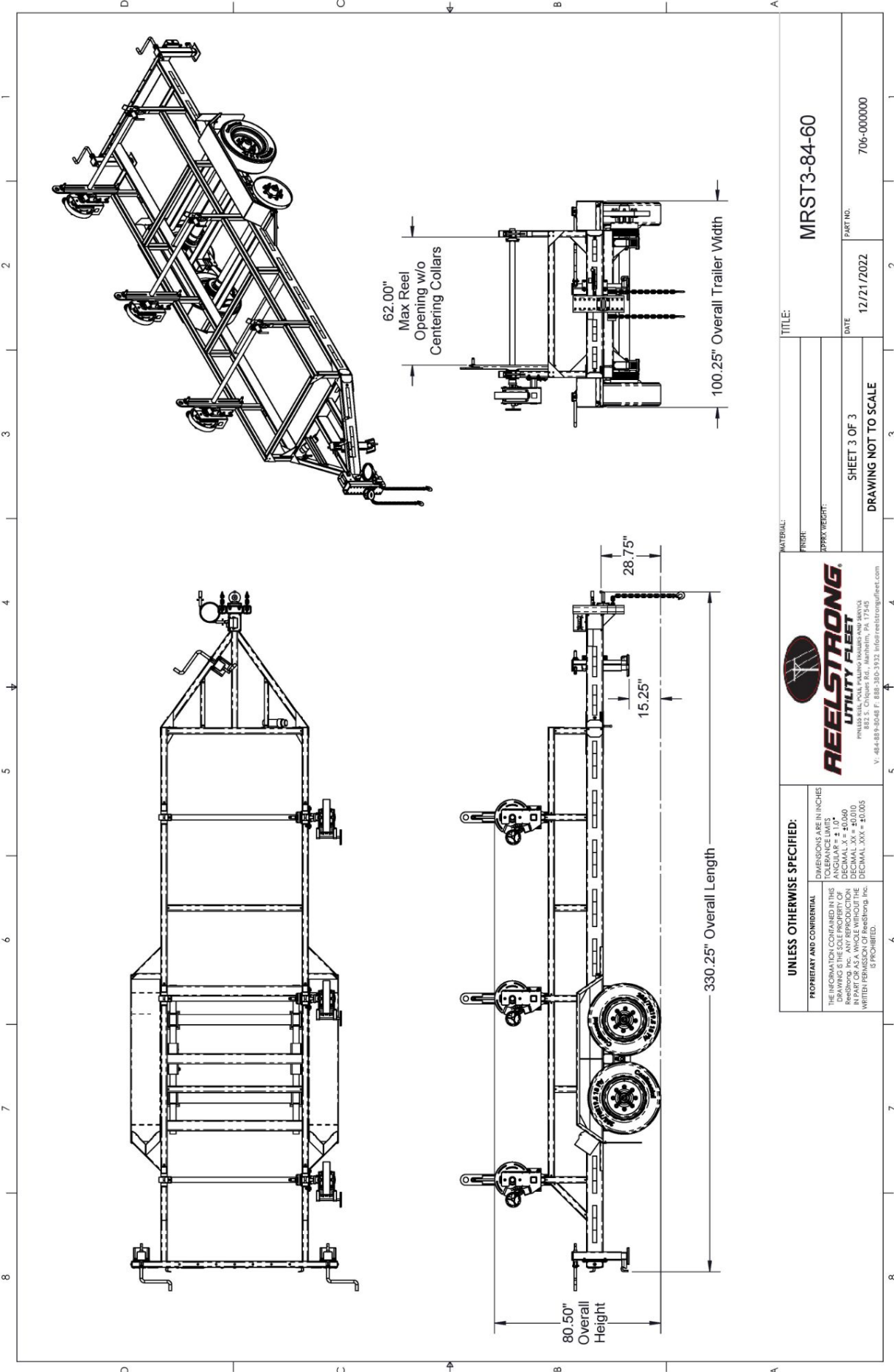
- Biodegradable Pretreat Acid Cleaning
(Superior to re-used sandblasting material that can impregnate metals with oil)
- Seams Caulked
- Rust Preventative 2-Part Epoxy Primer
- Standard Colors: Red, Black, White and CAT Yellow


OPTIONS

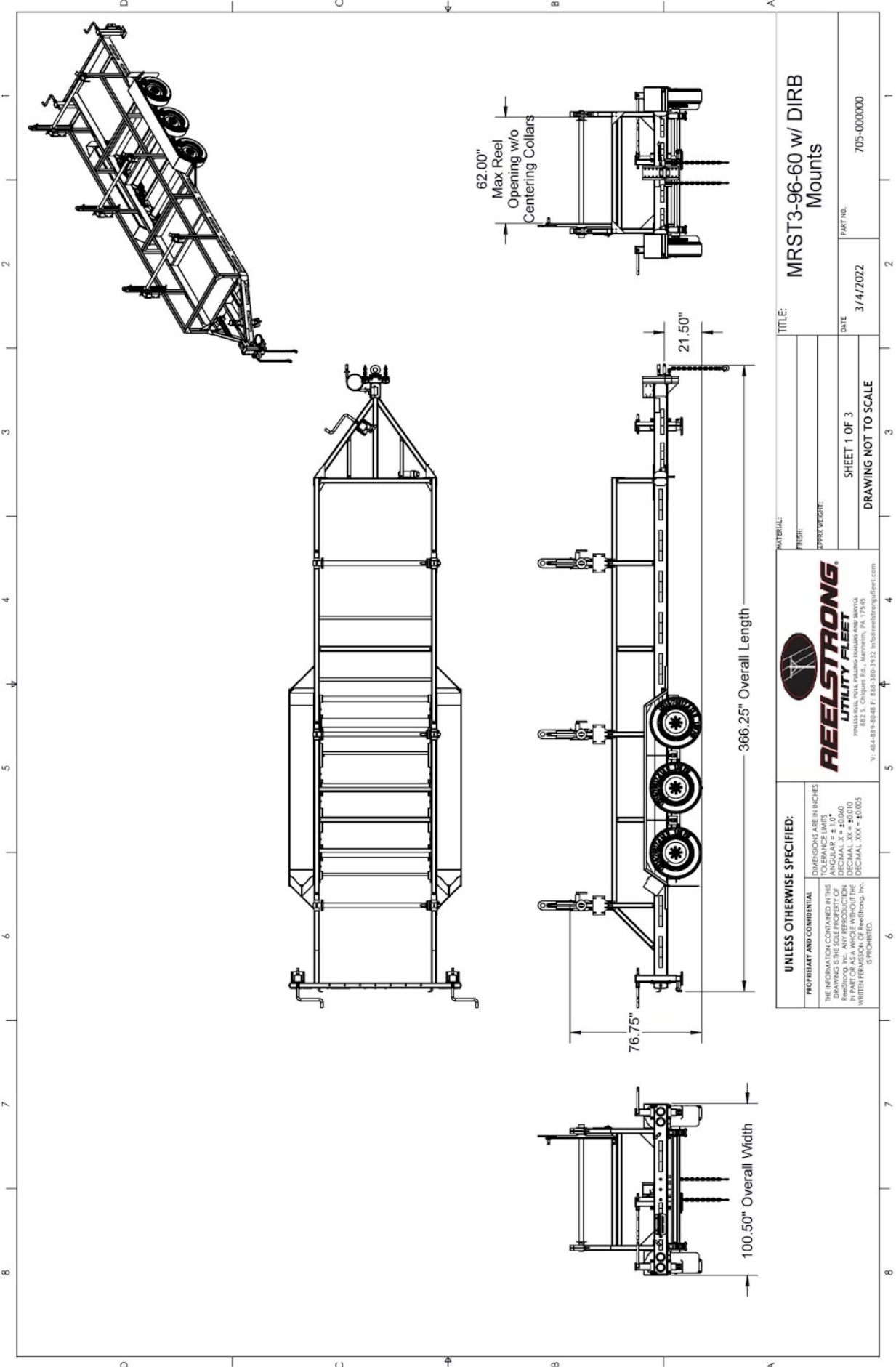
- 10-Year Galvanized Structural Warranty (2-Year Painted)
- 13 HP HONDA Engine Hydraulic Power Pack Comes STANDARD w/ ENGINE COVER, 15 Gallon Reservoir, Replaceable Oil Filter, Pressure Gauge and Solar Fade Resistant Plastic Control Placard. (Electric Start Optional)
- 3,300 or 4,800 ft/lbs Torque Hydraulic Take-up Retriever. *(Motor Spooled w/ Reel Brake ILO Cross-Over Relief Valve for Smooth Instant Reel Stoppage)*
- 2-7/16" Universal Adapter for Capstan and Power Reel Attachments
- 7 Inch General Purpose Capstan
- Collapsible Power Reel
- Rotating Arbor Ground

OPTIONS (cont.)

- Auxiliary Hydraulic Quick-Connect Ports
- Rewind Leveler
- 16" Bronze Alloy Ventilated Reel Brake w/ Ventilated Guard
- 16" Long 6-Bolt Hitch Extension (w/ 52" Safety Chains and Breakaway Cable Extension)
- Aluminum or Steel Toolbox
- 10K-HD / 15K / 20K Axles Available w/ Air Brakes
- Anti-Lock Brakes (ABS)
- Wiring Connections Soldered and Sealed w/ Heat Shrink Tubing
- Plug-and-Play Sealco Wiring Harness
- Wheel Chocks: Rubber or All Weather Galvanized Grip Strut
- Spare Tire and Mount
- Solar Charged Breakaway Kit
- Strobe Warning Lights
- All Stainless Steel Fasteners (½" and under)
- Hydraulic Front Jack
- Rear Underground Fairlead Roller Attachment
- Truck-Lite Lighting
- Lug Nut Indicators



UNLESS OTHERWISE SPECIFIED: DIMENSIONS ARE IN INCHES TOLERANCE LIMITS: ANGULAR ± 1.0° DECIMAL ± 0.0625 FRACTIONS ± 0.03125 DECIMAL .XXX ± 0.005 DECIMAL .XXXX ± 0.0005 WRITTEN PERMISSION OF ReelStrong, Inc. IS PROHIBITED.		 <p>REELSTRONG UTILITY FLEET <small>PROUDLY MANUFACTURED IN THE USA</small> V. 484-889-3048 F. 889-3502-3932 info@reelstrongfleet.com</p>	
PROPRIETARY AND CONFIDENTIAL THE INFORMATION CONTAINED IN THIS DRAWING IS THE SOLE PROPERTY OF ReelStrong, Inc. ANY REPRODUCTION, DISTRIBUTION, OR DISSEMINATION WITHOUT WRITTEN PERMISSION OF ReelStrong, Inc. IS PROHIBITED.		MRST3-84-60 TITLE:	
SHEET 3 OF 3 DRAWING NOT TO SCALE		DATE: 12/21/2022 PART NO.: 706-000000	



TITLE: MRST3-96-60 w/ DIRB Mounts

PART NO. 705-000000

DATE 3/14/2022

MATERIAL:

FINISH:

DRY WEIGHT:

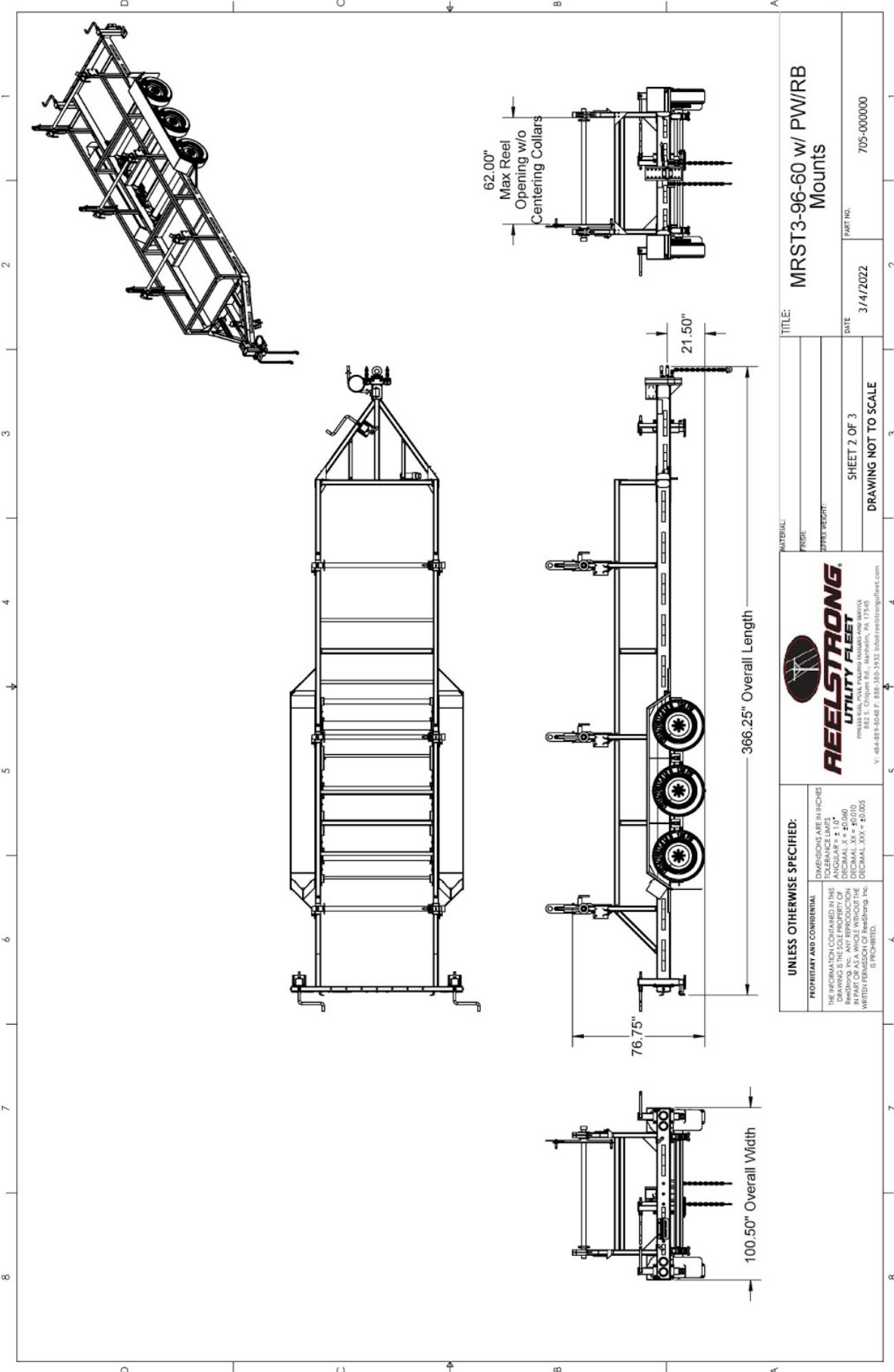
SHEET 1 OF 3

DRAWING NOT TO SCALE



UNLESS OTHERWISE SPECIFIED:
 DIMENSIONS ARE IN INCHES
 TOLERANCE LIMITS
 ANGULAR ± 1.0°
 DECIMAL ± 0.005
 DECIMAL .XX ± 0.010
 DECIMAL .XXX ± 0.005
 WRITTEN PERMISSION OF Feelstrong, Inc.
 IS PROHIBITED.

PROPRIETARY AND CONFIDENTIAL
 THE INFORMATION CONTAINED IN THIS
 DRAWING IS THE SOLE PROPERTY OF
 Feelstrong, Inc. ANY REPRODUCTION
 OR TRANSMISSION OF THIS DRAWING
 WITHOUT WRITTEN PERMISSION OF
 Feelstrong, Inc. IS PROHIBITED.



UNLESS OTHERWISE SPECIFIED: PROPRIETARY AND CONFIDENTIAL THE INFORMATION CONTAINED IN THIS DRAWING IS THE SOLE PROPERTY OF REEELSTRONG, INC. ANY REPRODUCTION OR TRANSMISSION OF THIS DRAWING WITHOUT THE WRITTEN PERMISSION OF REEELSTRONG, INC. IS PROHIBITED.		DIMENSIONS ARE IN INCHES TOLERANCE LIMITS ANGULAR ± 1.0° DECIMAL ± 0.005 DECIMAL .XX ± 0.010 DECIMAL .XXX ± 0.005	
REEELSTRONG UTILITY FLEET <small>REELING, PULLING, PILING, HOISTING AND SERVICE</small> <small>V. 484-888-8048 F. 888-310-3932 info@reeelstrongfleet.com</small>		TITLE: MRST3-96-60 w/ PW/IRB Mounts PART NO.: 705-000000 DATE: 3/14/2022 SHEET 2 OF 3 DRAWING NOT TO SCALE	