

# **REELSTRONG<sup>®</sup>**

## **UTILITY FLEET**

### **PT HEAVY DUTY LIFETIME WARRANTY MEGA-ROLLER™ w/ SELF-SECURING TONGUE-LOCK POLE TRAILER SPECIFICATION**



**MEGA-ROLLER™ W/  
SECURELOCK™ SYSTEM  
(PATENT PENDING)**

#### **LOWEST TOTAL COST OF OWNERSHIP (TCO) FROM:**

- **LIFETIME WARRANTY MEGA-ROLLER™** (6 Roller Patent Pending) w/ Bronze Super Alloy Bearings Provides a Smooth “ONE MAN OPERATION” of the Tongue. NO TRUCK NEEDED to Extend or Retract. NO WEAR PADS TO MAINTAIN OR REPLACE.
- SELF-SECURING SECURELOCK™ Tongue-lock. No Pins to Lose.
- **PRACTICAL:** No Expensive, Unnecessary Bronze Components, yet we Don't Cut Corners and Provide Premium, Heavy Duty, Top-Quality Latches, Hardware, Fittings and Components.
- Non-Binding/Freezing EZ Slide Pole Centering Stanchions. Replaces Rusted/Seized Lever Lock Stanchions and Expensive Bronze.
- Heavy Duty yet Simple 5” H-Beam Pole Seats

**BUILT FOR SAFETY. BUILT FOR SPEED. BUILT TO LAST.**

## CAPACITIES

- PT24: 27,600 lbs. GVWR @ 15% Tongue Weight
- PT24-RE: 27,600 lbs. GVWR @ 15% Tongue Weight
- PT30: 34,500 lbs. GVWR @ 15% Tongue Weight
- PT30-RE: 34,500 lbs. GVWR @ 15% Tongue Weight

## AXLES

- PT24: Tandem 12K lbs. Sprung
- PT24-RE: Tandem 12K lbs. Sprung
- PT30: Tandem 15K lbs. Sprung
- PT30-RE: Tandem 15K lbs. Sprung

## WHEELS

- PT24: (8) 16 x 6K / 8 on 6.5 BC w/ 5.50 Outset
- PT24-RE: (8) 16 x 6K / 8 on 6.5 BC w/ 5.50 Outset
- PT30: (8) 17.5 x 6.75 HC / 8 on 275mm BC w/ 5.60 Outset
- PT30-RE: (8) 17.5 x 6.75 HC / 8 on 275mm BC w/ 5.60 Outset

## TIRES

- PT24: (8) ST-235/85R16 LR-E Tires
- PT24-RE: (8) ST-235/85R16 LR-E Tires
- PT30: (8) ST-215/75R17.5 LR-H Tires
- PT30-RE: (8) ST-215/75R17.5 LR-H Tires

## BRAKES

- PT24: 12.25" x 5.00" Electric w/ Safety Breakaway Kit
- PT24-RE: 12.25" x 5.00" Electric w/ Safety Breakaway Kit
- PT30: 12.25" x 5.00" Electric w/ Safety Breakaway Kit
- PT30-RE: 12.25" x 5.00" Electric w/ Safety Breakaway Kit

## PAYLOAD: ALL FINAL PAYLOADS BASED ON CHOSEN MODEL AND OPTIONS

### POLE WEIGHT (PAYLOAD)

- PT24: 20,950 lbs. Approx.
- PT24-RE: 19,600 lbs. Approx.
- PT30: 27,150 lbs. Approx.
- PT30-RE: 25,500 lbs. Approx.

### LENGTH

#### Retracted / Extended Lengths:

- PT24: 32' / 36.5' / 41' / 45.5' / 50'
- PT24-RE: 34.25' / 40.5' / 46.75' / 53' / 63'
- PT30: 32' / 36.5' / 41' / 45.5' / 50'
- PT30-RE: 34.25' / 40.5' / 46.75' / 53' / 63'
- **Optional** Additional / Less Extension Increments Available

**WIDTH:** See Drawings Below

**WEIGHT:**

- PT24: 6,650 lbs. Approx.
- PT24-RE: 8,000 lbs. Approx.
- PT30: 7,350 lbs. Approx.
- PT30-RE: 8,700 lbs. Approx.

*Actual Trailer Weight will Vary with Options & Finishes Chosen.*

**CARGO BED**

- PT24: 100" X 43" (Customizable)
- PT24-RE: 100" X 41" (Customizable)
- PT30: 100" X 43" (Customizable)
- PT30-RE: 100" X 41" (Customizable)

**STANDARD FEATURES**

- **LIFETIME WARRANTY MEGA-ROLLER 6-ROLLER** Telescoping Tongue (NO WEAR PADS TO REPLACE)
- **LIFETIME WARRANTY MEGA-ROLLER 8-ROLLER** Telescoping Rear Extension (NO WEAR PADS TO REPLACE) (PT24-RE and PT30-RE only)
- **SELF-SECURING SECURELOCK™** Tongue Lock Roller System (No Loose Pin)
- **NON-BINDING/FREEZING EZ-SLIDE POLE-CENTERING STANCHIONS**
- Oil Bath Hubs (Greaseable Option All)
- Electric Brakes
- Wheel Chock Holders
- Adjustable Spring Pads
- Slipper Springs
- Reinforced Spring Hangers
- Wheel Chock Holders
- ALL Pole Rests: 5" H Beam
- Winch Binders w/ Ratcheting Breaker Bar (**BOA Crank Winch Optional**)

**STANDARD TRAILER BODY**

- 6" X 6" X 3/8" Wall ("Square" for Max Equal Lateral and Vertical Strength) Male Extendable Tongue Tube (Compare to Competition)
- 8" X 8" X 1/4" Wall Female Tongue Tube
- 7" X 3" X 1/4" Wall Male Extendable Rear Extension Tubes (PT24-RE and PT30-RE only)
- 8" X 4" X 1/4" Wall Female Rear Extension Tubes (PT24-RE and PT30-RE only)
- Oversized Precision Rollers w/ Bronze Bearings
- 7-Position Adjustable Hitch
- 1/2" X 42" GR70 Yellow Zinc Safety Chains with Hooks

## **STANDARD TRAILER BODY (cont.)**

- Removable Male Extension Tongue
- Standard Cargo Area
- 12,000 lbs. Static Front Jack w/ Spring Return
- Fenders: 1/8" Fabricated Diamond Plate

## **WIRING**

- DOT / ICC-- FMVSS / CMVSS Approved LED ULTRA- HIGH VISIBILITY 180 DEGREE BULLET Marker and Clearance Lights
- LED Sealed Beam Rubber Mounted Stop, Turn, Tail and Marker Lights
- **Internal Cat Track** Protects Wiring (and air brakes if applicable)
- Removable Rear Access Door to Access Cat Track and Wiring
- Breakaway Kit with Absorbed Glass Mat (AGM) Battery
- 100% Sealed Heat-Shrunked Wiring Connections w/ Full Loom
- FULLY PROTECTED 7 or 6 Way Female Plug acts as Junction Box Recessed in FRAME RAIL. No Easily Damaged Plastic Junction Boxes

## **PAINT**

- Biodegradable Pretreat Acid Cleaning  
(Superior to re-used sandblasting material that can impregnate metals with oil)
- Seams Caulked
- Rust Preventative 2-Part Epoxy Primer
- Two-Part Polyurethane Topcoats (2 topcoats)
- Standard Colors: White and CAT Yellow (Custom Available)

## **OPTIONS**

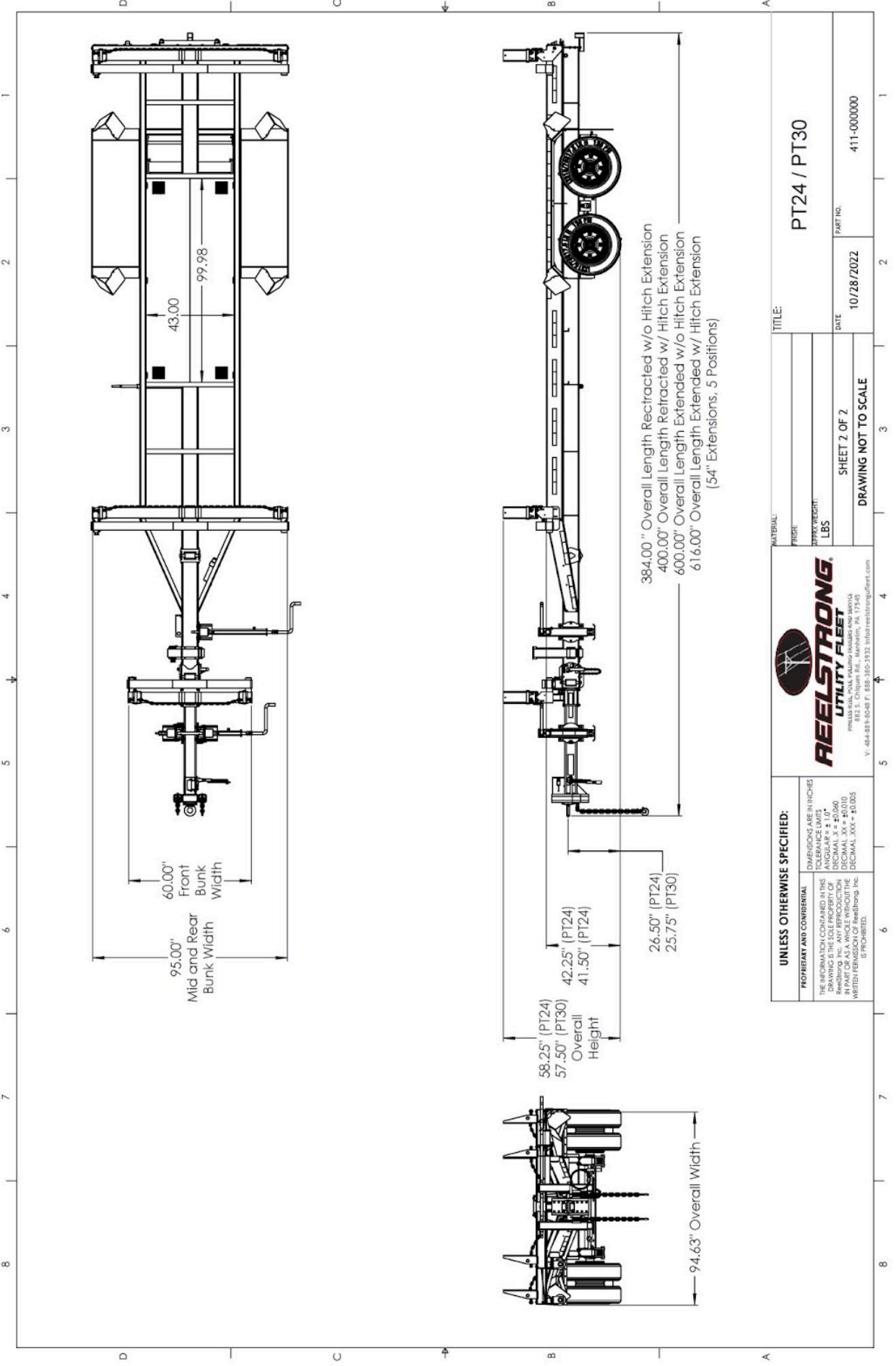
- 10-Year Galvanized Structural Warranty (2-Year Painted)
- BOA Hand Operated Ratcheting Pole Strap Winch for SAFETY and Ultra Ease-of-use
- Air Brakes w/ ABS
- Lever Lock Stanchions
- Wiring Connections Soldered and Sealed w/ Heat Shrink Tubing
- Plug-and-Play Sealco Wiring Harness
- Lever Lock Stanchions
- Wheel Chocks: Rubber or All Weather Galvanized Grip Strut
- Spare Tire and Mount
- Extension Intervals to Customer Spec
- Solar Charged Breakaway Kit
- Quick-Rotate Swivel Jack
- 16" Long 6-Bolt Hitch Extension (w/ 52" Safety Chains and Breakaway Cable Extension)
- 3" Lunette Eye
- All Stainless Steel Fasteners (1/2" and under)
- Anti-Skid/Anti-Glare Sand Paint on all Walking Surfaces

**OPTIONS (cont.)**

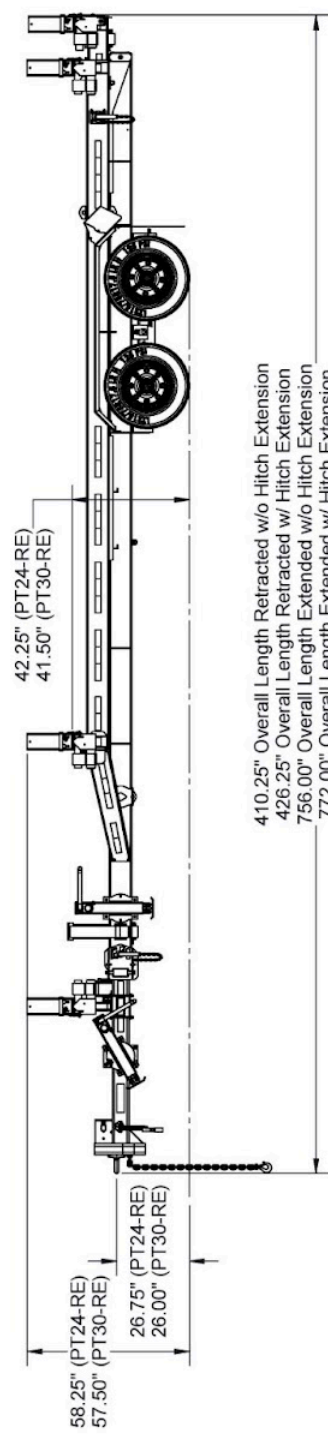
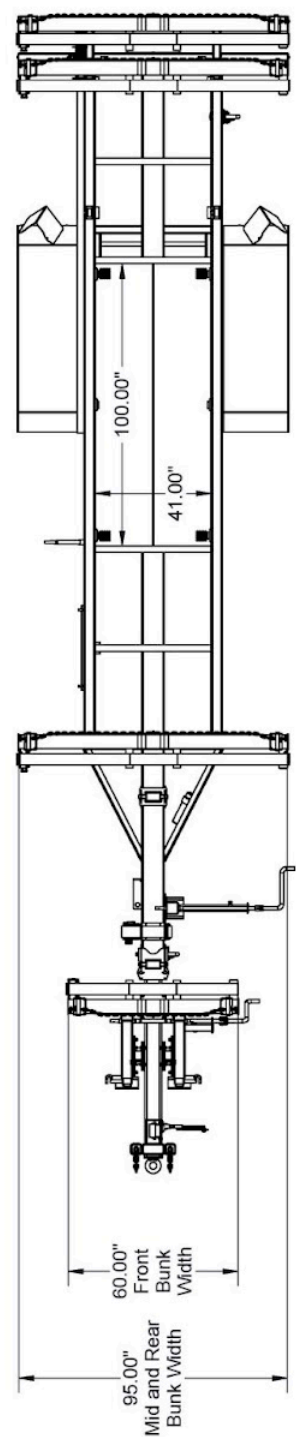
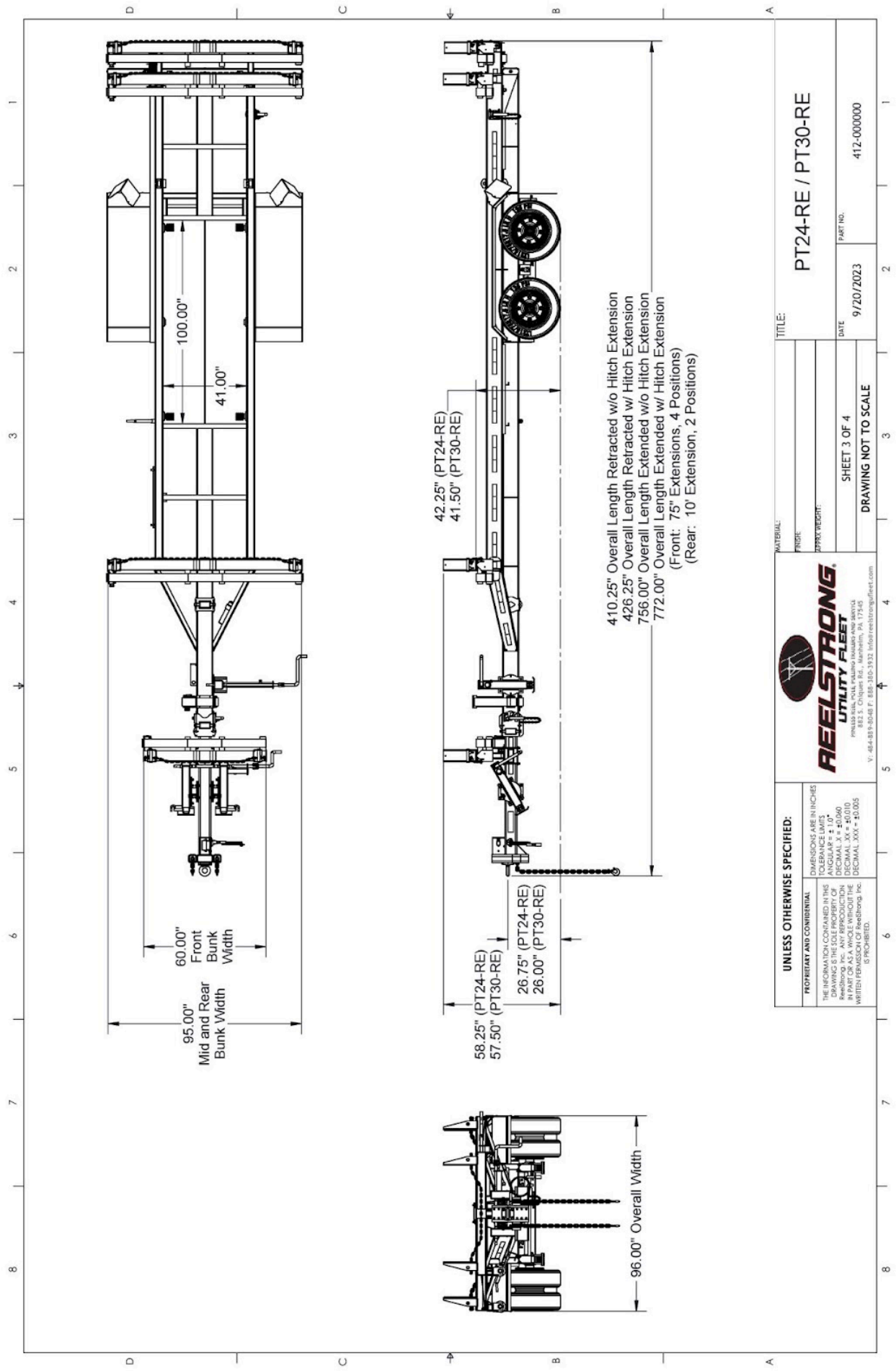
- Various Trailer Light Plugs (Customer Choice)
- Truck-Lite Lighting
- Lug Nut Indicators

**OPTIONAL LIGHT BAR**

- All TIG Welded Aluminum w/ Claw-Tooth for Superior Grip
- Contains (4) Four 4" Stop/Turn / Tail Rubber Mounted Sealed Beam LED Lights
- (3) Three Center ID Marker Lights
- (2) Two Side Marker Lights
- 7-Way REMOVABLE, DOUBLE ENDED NON-HARD WIRED Light Plug (to prevent yank-out damage and for easy maintenance) (7-Way ILO 4-Way is easier to source and more readily available for you)
- 35' Standard Electric Cable Length with a 7-Way Connector Plug



<b>UNLESS OTHERWISE SPECIFIED:</b>		<b>FEELSTRONG UTILITY FLEET</b>	
PROPRIETARY AND CONFIDENTIAL THE INFORMATION CONTAINED IN THIS DRAWING IS THE SOLE PROPERTY OF REEHLSTRONG, INC. ANY REPRODUCTION OR TRANSMISSION OF THIS DRAWING WITHOUT THE WRITTEN PERMISSION OF REEHLSTRONG, INC. IS PROHIBITED.		DIMENSIONS ARE IN INCHES TOLERANCE LIMITS ANGULAR ± 1.0° DECIMAL ± .005 DECIMAL .XX ± .0010 DECIMAL .XXX ± .0005	
MATERIAL:		TITLE: PT24 / PT30	
FINISH:		PART NO. 411-000000	
APPROX WEIGHT: LBS		DATE 10/28/2022	
SHEET 2 OF 2		DRAWING NOT TO SCALE	



<p><b>UNLESS OTHERWISE SPECIFIED:</b></p> <p>PROPRIETARY AND CONFIDENTIAL</p> <p>THE INFORMATION CONTAINED IN THIS DRAWING IS THE SOLE PROPERTY OF REELSTRONG, INC. ANY REUSE OR REPRODUCTION IN PART OR AS A WHOLE WITHOUT THE WRITTEN PERMISSION OF REELSTRONG, INC. IS PROHIBITED.</p>		<p>REELSTRONG<sup>®</sup></p> <p>UTILITY FLEET</p> <p>822 S. Chiquas Rd., Mahan, PA 17140 V: 484-889-8048 F: 888-380-3932 <a href="mailto:info@reelstrong.com">info@reelstrong.com</a></p>	
<p>THE INFORMATION CONTAINED IN THIS DRAWING IS THE SOLE PROPERTY OF REELSTRONG, INC. ANY REUSE OR REPRODUCTION IN PART OR AS A WHOLE WITHOUT THE WRITTEN PERMISSION OF REELSTRONG, INC. IS PROHIBITED.</p>		<p>DATE: 9/20/2023</p> <p>PART NO.: 4172-000000</p>	
<p>TITLE: PT24-RE / PT30-RE</p>		<p>SHEET 3 OF 4</p> <p>DRAWING NOT TO SCALE</p>	