

REELSTRONG[®]

UTILITY FLEET

PLC POWERLOCK™ REEL / CARGO TRAILER SPECS



LOWEST TOTAL COST OF OWNERSHIP (TCO) via:

- **LIFETIME WARRANTY PINLESS POWERLOCK™** Reel Bar Securement
- No Pins or Cotters to Secure Reel Bar (*most critical safety point*).
- Fastest, Safest Loading, Unloading and Deployment Reduces Labor.
- Yellow Zinc Electro-Plated and Stainless Precision Machined Components
- **PRACTICAL:** No Expensive, Unnecessary Bronze Components, yet we Don't Cut Corners and Provide Premium, Heavy Duty, Top-Quality Latches, Hardware, Fittings and Components.
- OPEN TOP, "NON ENCAPSULATED" NYLATRON BEARING SADDLE (low-coefficient of friction). OPEN TOP = LESS FRICTION/LOW MAINTENANCE and EASIER PAY-OUT.
(Haven't Replaced a Saddle due to Wear in 13 Years)

BUILT FOR SAFETY. BUILT FOR SPEED. BUILT TO LAST.

CAPACITIES

- PLC8: 11,050 lbs. GVWR @ 15% Tongue Weight
- PLC12: 16,100 lbs. GVWR @ 15% Tongue Weight
- PLC18: 22,100 lbs. GVWR @ 15% Tongue Weight

AXLES

- PLC8: Single 10K lbs. Sprung
- PLC12: Tandem 7K lbs. Torsion
- PLC18: Tandem 10K lbs. Sprung

WHEELS

- PLC8: (2) 17.5 x 6.75 HC / 8 on 6.5 BC w/ 0.19 Outset
- PLC12: (4) 16 x 6K / 8 on 6.5 BC w/ Zeroset
- PLC18: (4) 17.5 x 6.75 HC / 8 on 6.5 BC w/ 0.19 Outset

TIRES

- PLC8: (2) LT-215/75R17.5 LR-H Tires
- PLC12: (4) ST-235/85R16 LR-E Tires
- PLC18: (4) LT-215/75R17.5 LR-H Tires

BRAKES

- PLC8: 12.25" x 3.38" Electric w/ Safety Breakaway Kit
- PLC12: 12.00" x 2.00" Electric w/ Safety Breakaway Kit
- PLC18: 12.25" x 3.38" Electric w/ Safety Breakaway Kit

PAYLOAD: ALL FINAL PAYLOADS BASED ON CHOSEN MODEL AND OPTIONS

REEL / CARGO WEIGHT (PAYLOAD)

- PLC8: 8,200 lbs Approx
- PLC12: 12,500 lbs Approx
- PLC18: 18,050 lbs Approx

(ADDITIONAL WEIGHT OF OPTIONS REDUCES PAYLOAD)

CARGO AREA:

- PLC8: 5' x 10'
- PLC12: 71" x 12'
- PLC18: 71" x 12'

CARGO BED DEPTH:

- PLC8: 18"
- PLC12: 24"
- PLC18: 24"

REEL DIAMETER: 72" Max (Larger dia. available)

REEL WIDTH:

- PLC8: 54" (60" wide optional if trailer is made wider)
- PLC12: 60"
- PLC18: 60"

REEL BAR DIA: 2.5"

OVERALL LENGTH:

- PLC8: 15' Approx
- PLC12: 231" Approx
- PLC18: 231" Approx

OVERALL WIDTH: See Drawings

OVERALL WEIGHT:

- PLC8: 2,850 lbs. Approx.
- PLC12: 3,600 lbs Approx
- PLC18: 4,050 lbs Approx

Actual Trailer Weight will Vary with Options & Finishes Chosen.

STANDARD FEATURES

- LIFETIME WARRANTY PINLESS POWERLOCK™ on Reel Stand
- Oil Bath Hubs (Greaseable Option All)
- Electric Brakes
- Wheel Chock Holders
- Dexter Axles
- OPEN TOP, "NON ENCAPSULATED" NYLATRON BEARING SADDLE (low-coefficient of friction). OPEN TOP = LESS FRICTION/LOW MAINTENANCE and EASIER PAY-OUT. (Haven't Replaced a Saddle due to Wear in 13 Years)

STANDARD TRAILER BODY

- 5" X 2" X ¼" Tubular Frame
- 6-Position Adjustable Hitch
- ⅜" X 36" GR70 Yellow Zinc Safety Chains with Hooks
- ½" X 42" GR70 Yellow Zinc Safety Chains for Models Exceeding 18,000 lbs. GVWR
- 12,000 lbs. Front Jack w/ Spring Return
- Ground Lug: Copper Alloy Star Washer Bolted to Frame (Welded Optional)
- Fenders: ⅛" Fabricated Diamond Plate
- Catwalks w/ Anti-Slip SERRATED Surface

STANDARD TRAILER BODY (cont.)

- (2) Rear 8,000 lbs. CRANK-DOWN Outrigger Jacks
- Wheel Chock Holders
- Built-in Reel Pockets to Accept Optional Removable Reel Stands
- Bed Sides: 18" Tall (PLC8), 24" Tall (PLC10/PLC16)
- Cross Tongue Top-Opening Toolbox w/ Lift Maintainer Design

WIRING

- DOT / ICC-- FMVSS / CMVSS Approved LED ULTRA- HIGH VISIBILITY 180 DEGREE BULLET Marker and Clearance Lights
- LED Sealed Beam Rubber Mounted Stop, Turn, Tail and Marker Lights
- 100% Sealed Heat-Shrunked Wiring Connections w/ Full Loom
- Breakaway Kit with Absorbed Glass Mat (AGM) Battery
- FULLY PROTECTED 7 or 6 Way Female Plug acts as Junction Box Recessed in FRAME RAIL. No Easily Damaged Plastic Junction Boxes!

PAINT

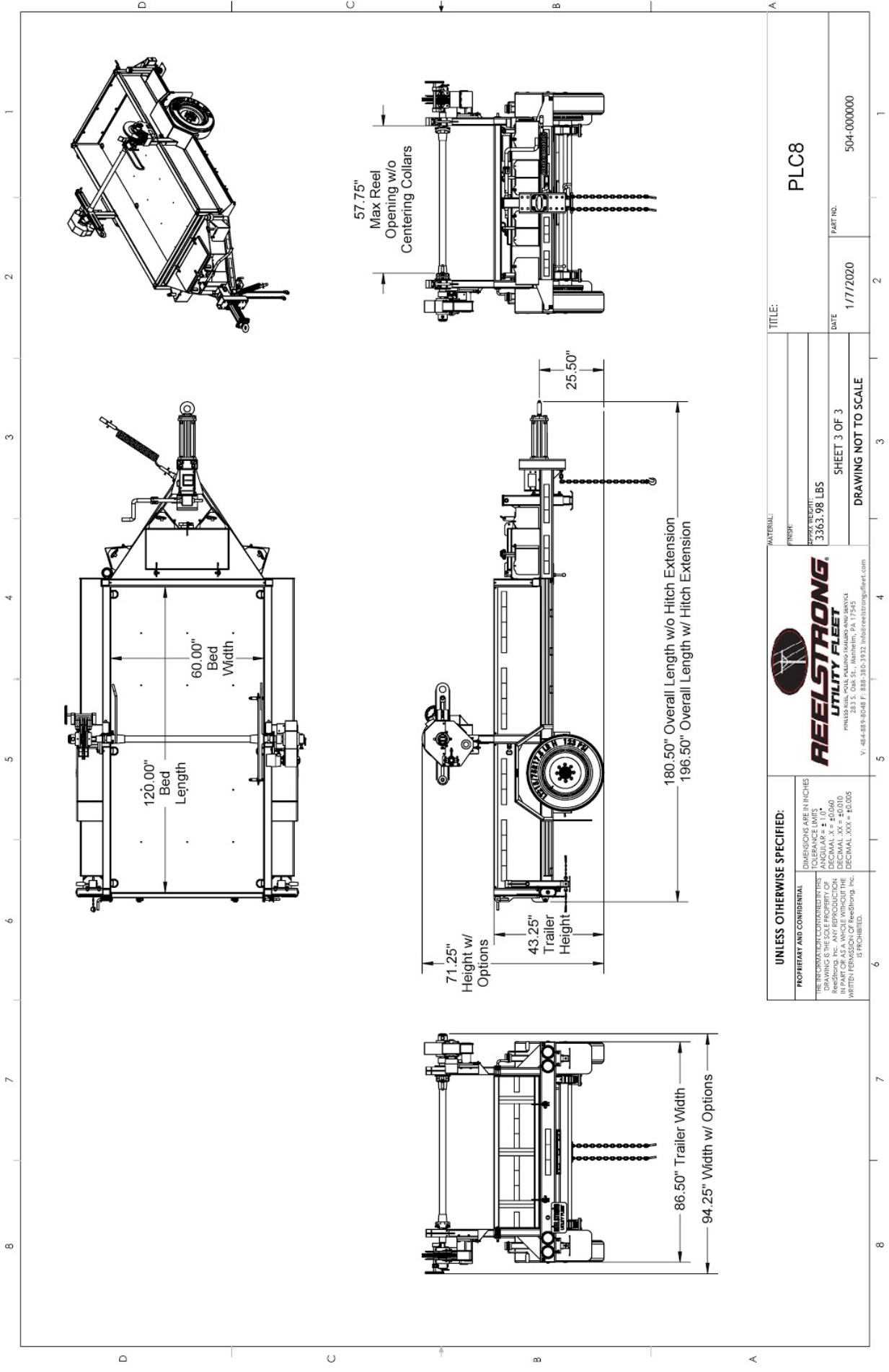
- Biodegradable Pretreat Acid Cleaning
(Superior to re-used sandblasting material that can impregnate metals with oil)
- Seams Caulked
- Rust Preventative 2-Part Epoxy Primer
- Two-Part Polyurethane Topcoats (2 topcoats)
- Standard Colors: White and CAT Yellow (Custom Available)

OPTIONS

- 13 HP HONDA Engine Hydraulic Power Pack Comes STANDARD w/ ENGINE COVER, 15 Gallon Reservoir, Replaceable Oil Filter, Pressure Gauge and Solar Fade Resistant Plastic Control Placard. (Electric Start Optional)
- 10-Year Galvanized Structural Warranty (2-Year Painted)
- 18", 20" Tall Cargo Wall
- Custom Lengthened Trailer Chassis to Fit 13HP Engine Pack (Available for all Models)
- Aluminum Engine Cover
- Removable Reel Stands
- 3,300 ft/lbs Torque Hydraulic Take-up Retriever. (*Motor Spooled w/ Reel Brake ILO Cross-Over Relief Valve for Smooth Instant Reel Stoppage*)
- 2-7/16" Universal Adapter for Capstan and Power Reel Attachments
- 16" Bronze Alloy TRU-STOP Ventilated Reel Brake w/ Ventilated Guard
- 7 Inch General Purpose Capstan
- Collapsible Power Reel
- Rotating Arbor Ground
- 16" Long 6-Bolt Hitch Extension (w/ 52" Safety Chains and Breakaway Cable Extension)
- 3" Lunette Eye

OPTIONS (cont.)

- All Stainless Steel Fasteners (½” and under)
- Anti-Skid/Anti-Glare Sand Paint on all Walking Surfaces
- Various Trailer Light Plugs (Customer Choice)
- 10K Sprung Axles w/ Air Brakes and ABS (Requires 102” Overall Width)
- Wiring Connections Soldered and Sealed w/ Heat Shrink Tubing
- Plug-and-Play Sealco Wiring Harness
- Wheel Chocks: Rubber or All Weather Galvanized Grip Strut
- Spare Tire and Mount
- Solar Charged Breakaway Kit
- Strobe Warning Lights
- Truck-Lite Lighting
- Additional Wheel Chock Holders (2 Standard, 4 Optional)
- Lug Nut Indicators
- Lateral Turret Option (Size Customizable)



TITLE: PLC8	
MATERIAL:	
FINISH:	
NET WEIGHT:	3363.98 LBS
DATE:	1/7/2020
PART NO.:	504-000000

SHEET 3 OF 3	
DRAWING NOT TO SCALE	

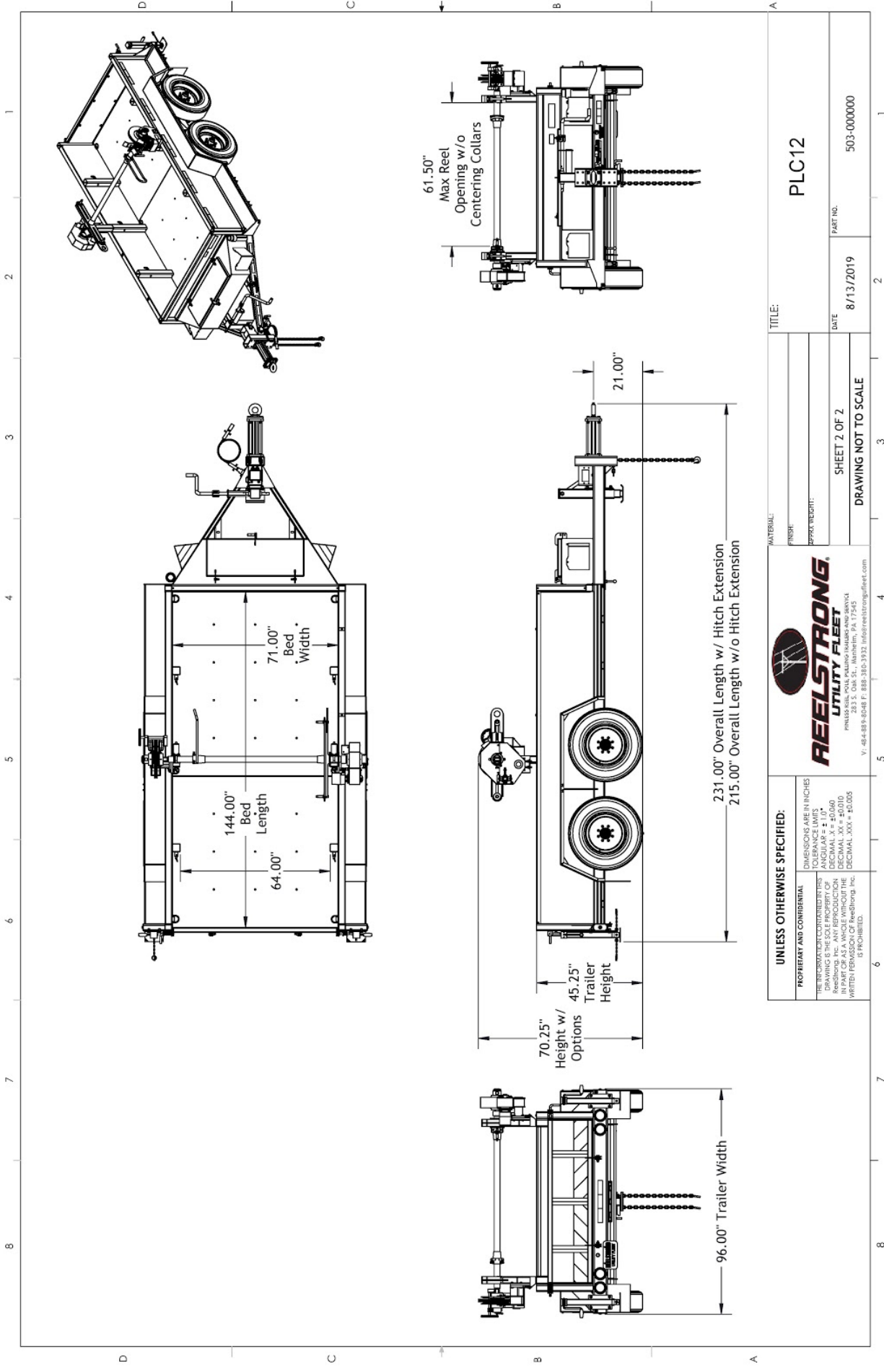
REELSTRONG
UTILITY FLEET

PHILADELPHIA, PA 19104
283 S. Oak St., Warminster, PA 17245
V: 484-889-8048 F: 888-380-3932 info@reelstrongfleet.com

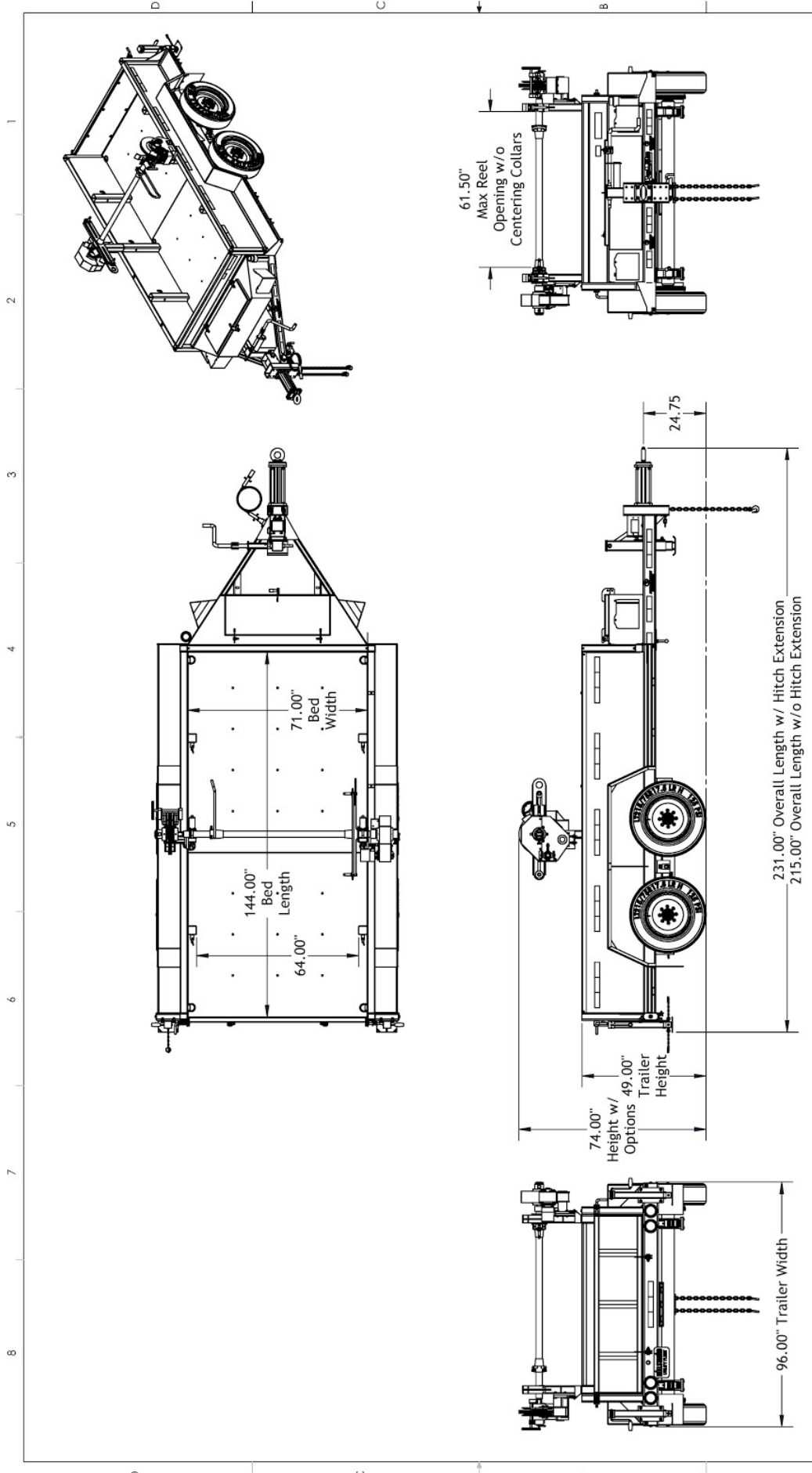
UNLESS OTHERWISE SPECIFIED:

PROPERTY AND CONFIDENTIAL INFORMATION CONTRACTED INTERESTS
DRAWING IS THE SOLE PROPERTY OF REELSTRONG UTILITY FLEET
IN PART OR AS A WHOLE WITHOUT THE WRITTEN PERMISSION OF ReelStrong, Inc. IS PROHIBITED.

DIMENSIONS ARE IN INCHES
TOLERANCE LIMITS:
DECIMAL .XX = +0.060
DECIMAL .XXX = +0.010
DECIMAL .XXX = ±0.005



TITLE: PLC12	
MATERIAL:	
FINISH:	
APPROX WEIGHT:	
SHEET 2 OF 2	
DATE: 8/13/2019	PART NO: 503-000000
DRAWING NOT TO SCALE	
 <small> 283 S. Oak St., Nashleim, PA 17245 V: 484-889-8048 F: 888-380-3932 info@reelstrongfleet.com </small>	
UNLESS OTHERWISE SPECIFIED: <small> DIMENSIONS ARE IN INCHES TOLERANCE LIMITS: DECIMAL .XX = ±0.060 DECIMAL .XXX = ±0.010 DECIMAL .XXX = ±0.005 WRITTEN PERMISSION OF ReelStrong, Inc. IS PROHIBITED. </small>	<small> PROPRIETARY AND CONFIDENTIAL INFORMATION CONTAINED HEREIN IS THE SOLE PROPERTY OF REELSTRONG, INC. ANY REPRODUCTION OR DISTRIBUTION OF THIS DRAWING WITHOUT THE WRITTEN PERMISSION OF REELSTRONG, INC. IS PROHIBITED. </small>



MATERIAL:		TITLE:		
FINISH:		PLC18		
APPX. WEIGHT:		DATE	8/13/2019	PART NO.
UNLESS OTHERWISE SPECIFIED:		DRAWING NOT TO SCALE		
DIMENSIONS ARE IN INCHES TOLERANCE LIMITS DECIMAL .X = ±0.060 DECIMAL .XX = ±0.010 DECIMAL .XXX = ±0.005 IS PROHIBITED.		 REELESTRONG UTILITY FLEET 2813 S. Oak St., Hanover, PA 17343 P: 484-889-8048 F: 888-390-3932 info@reelestrongfleet.com		