

REELSTRONG[®]

UTILITY FLEET

CPT LIFETIME WARRANTY MEGA-ROLLER™ w/ SELF-SECURING TONGUE-LOCK COMBINATION REEL / POLE / CARGO TRAILER SPECIFICATION



LOWEST TOTAL COST OF OWNERSHIP (TCO) via:

- **LIFETIME WARRANTY MEGA-ROLLER™** (6 Roller Patent Pending) w/ Bronze Super Alloy Bearings Provides a Smooth “ONE MAN OPERATION” of the Tongue. NO TRUCK NEEDED to Extend or Retract. NO WEAR PADS TO MAINTAIN OR REPLACE.
- SELF-SECURING SECURELOCK™ Tongue-lock. No Pins to Lose.
- **PRACTICAL:** No Expensive, Unnecessary Bronze Components, yet we Don't Cut Corners and Provide Premium, Heavy Duty, Top-Quality Latches, Hardware, Fittings and Components.
- Non-Binding/Freezing EZ Slide Pole Centering Stanchions. Replaces Rusted/Seized Lever Lock Stanchions and Expensive Bronze.
- Heavy Duty yet Simple 5” H-Beam Pole Seats

BUILT FOR SAFETY. BUILT FOR SPEED. BUILT TO LAST.

CAPACITIES

- CPT14: 16,100 lbs. GVWR @ 15% Tongue Weight
- CPTL14: 16,100 lbs. GVWR @ 15% Tongue Weight
- CPTL14: 16,100 lbs. GVWR @ 15% Tongue Weight
- CPT20: 22,100 lbs. GVWR @ 15% Tongue Weight
- CPTL20: 22,100 lbs. GVWR @ 15% Tongue Weight
- CPTL20: 22,100 lbs. GVWR @ 15% Tongue Weight

AXLES

- CPT14: Tandem 7K lbs. Torsion
- CPTL14: Tandem 7K lbs. Torsion
- CPTL14: Tandem 7K lbs. Torsion
- CPT20: Tandem 10K lbs. Sprung
- CPTL20: Tandem 10K lbs. Sprung
- CPTL20: Tandem 10K lbs. Sprung

WHEELS

- CPT14: (4) 16 x 6K / 8 on 6.5 BC w/ Zeraset
- CPTL14: (4) 16 x 6K / 8 on 6.5 BC w/ Zeraset
- CPTL14: (4) 16 x 6K / 8 on 6.5 BC w/ Zeraset
- CPT20: (4) 17.50 x 6.75 HC / 8 on 6.5 BC w/ 0.19 Inset
- CPTL20: (4) 17.50 x 6.75 HC / 8 on 6.5 BC w/ 0.19 Inset
- CPTL20: (4) 17.50 x 6.75 HC / 8 on 6.5 BC w/ 0.19 Inset

TIRES

- CPT14: (4) ST-235/85R16 LR-E Tires
- CPTL14: (4) ST-235/85R16 LR-E Tires
- CPTL14: (4) ST-235/85R16 LR-E Tires
- CPT20: (4) ST-215/75R17 LR-H Tires
- CPTL20: (4) ST-215/75R17 LR-H Tires
- CPTL20: (4) ST-215/75R17 LR-H Tires

BRAKES

- CPT14: 12.00" x 2.00" Electric w/ Safety Breakaway Kit
- CPTL14: 12.00" x 2.00" Electric w/ Safety Breakaway Kit
- CPTL14: 12.00" x 2.00" Electric w/ Safety Breakaway Kit
- CPT20: 12.25" x 3.38" Electric w/ Safety Breakaway Kit
- CPTL20: 12.25" x 3.38" Electric w/ Safety Breakaway Kit
- CPTL20: 12.25" x 3.38" Electric w/ Safety Breakaway Kit

PAYLOAD: ALL FINAL PAYLOADS BASED ON CHOSEN MODEL AND OPTIONS

POLE WEIGHT (PAYLOAD)

- CPT14: 11,350 lbs. Approx.
- CPTL14: 11,150 lbs. Approx.
- CPTL14: 11,050 lbs. Approx.
- CPT20: 16,600 lbs. Approx.
- CPTL20: 16,400 lbs. Approx.
- CPTL20: 16,350 lbs. Approx.

OVERALL LENGTH Retracted / Extended Lengths:

- CPT14: 21' / 26' / 31'
- CPTL14: 25' / 32' / 39'
- CPTL14: 29' / 36' / 43'
- CPT20: 21' / 26' / 31'
- CPTL20: 25' / 32' / 39'
- CPTL20: 29' / 36' / 43'
- **Optional** Additional / Less Extension Increments Available

WIDTH: 89.25"

CURB WEIGHT:

- CPT14: 4,750 lbs. Approx.
- CPTL14: 4,950 lbs. Approx.
- CPTL14: 5,050 lbs. Approx.
- CPT20: 5,500 lbs. Approx.
- CPTL20: 5,700 lbs. Approx.
- CPTL20: 5,750 lbs. Approx.

Actual Trailer Weight will Vary with Options & Finishes Chosen.

POLE SEAT HEIGHT: 45"

CARGO BED

- CPT14: 110.75" L X 63.75" W x 15" H (Customizable)
- CPTL14: 110.75" L X 63.75" W x 15" H (Customizable)
- CPTL14: 110.75" L X 63.75" W x 15" H (Customizable)
- CPT20: 110.75" L X 63.75" W x 15" H (Customizable)
- CPTL20: 110.75" L X 63.75" W x 15" H (Customizable)
- CPTL20: 110.75" L X 63.75" W x 15" H (Customizable)

STANDARD FEATURES

- **LIFETIME WARRANTY MEGA-ROLLER 6-ROLLER** Telescoping Tongue (NO WEAR PADS TO REPLACE)
- **SELF-SECURING SECURELOCK™** Tongue Lock Roller System (No Loose Pin)
- **NON-BINDING/FREEZING EZ-SLIDE POLE-CENTERING STANCHIONS**
- Oil Bath Hubs (Greaseable Option All)
- Electric Brakes
- Wheel Chock Holders

POLE SECUREMENT

- ALL Pole Rests: 5" H Beam
- Winch Binders w/ Ratcheting Breaker Bar (**BOA Crank Winch Optional**)

STANDARD TRAILER BODY

- 6" X 6" X 3/8" ("Square" for Max Equal Lateral and Vertical Strength) Male Extendable Tongue. (Compare to Competition)
- 8" X 8" X 1/4" Wall Female Tongue Tube
- 7" X 3" X 1/4" Wall Frame
- 7-Position Adjustable Hitch
- 3/8" X 36" GR70 Yellow Zinc Safety Chains with Hooks
- 1/2" X 42" GR70 Yellow Zinc Safety Chains for Models Exceeding 18,000 lbs. GVWR
- Removable Male Extension Tongue
- Standard Cargo Area
- 12,000 lbs. Static Front Jack w/ Spring Return
- Tailgate Chains
- Front Removable / Adjustable Pole Seat Mounted on Front Male Tongue
- 60" Wide 5" H-Beam Pole Seat w/ EZ-Slide Stanchions (Hitch Extension Recommended to prevent Jack-knifing and Clear Most Step Bumpers)
- Six (6) D-Rings Front, Center and Rear for Cargo

WIRING

- DOT / ICC-- FMVSS / CMVSS Approved LED ULTRA- HIGH VISIBILITY 180 DEGREE BULLET Marker and Clearance Lights
- LED Sealed Beam Rubber Mounted Stop, Turn, Tail and Marker Lights
- **Internal Cat Track** Protects Wiring (and air brakes if applicable)
- Removable Rear Access Door to Access Cat Track and Wiring
- Breakaway Kit with Absorbed Glass Mat (AGM) Battery
- 100% Sealed Heat-Shrunked Wiring Connections w/ Full Loom
- Breakaway Kit with Absorbed Glass Mat (AGM) Battery
- FULLY PROTECTED 7 or 6 Way Female Plug acts as Junction Box Recessed in FRAME RAIL. No Easily Damaged Plastic Junction Boxes

PAINT

- I.M.P.A.C.T Intense Metal pH Acid Surface Prep
(Superior to sandblasting that can infuse metal w/ oil)
- Seams Caulked
- Rust Preventative 2-Part Epoxy Primer
- Two-Part Polyurethane Topcoats (2 topcoats)
- Standard Colors: White and CAT Yellow (Custom Available)

OPTIONS

- 13 HP HONDA Engine Hydraulic Power Pack Comes STANDARD w/ ENGINE COVER, 15 Gallon Reservoir, Replaceable Oil Filter, Pressure Gauge and Solar Fade Resistant Plastic Control Placard. (Electric Start Optional)
- Full Width of Trailer 5" H-Beam Pole Seat ILO 60" Wide
- 10-Year Galvanized Structural Warranty (2-Year Painted)
- BOA Hand Operated Ratcheting Pole Strap Winch for SAFETY and Ultra Ease-of-use
- Air Brakes w/ ABS
- 1 x 7,000 LB Center REEL STAND w/ Ultra-Low Friction, High Impact Nylatron Reel Bar Saddle
- 2 x 5,000 LB Reel Stands

IF REEL STAND/S ARE CHOSEN THE FOLLOWING OPTIONS ARE POSSIBLE

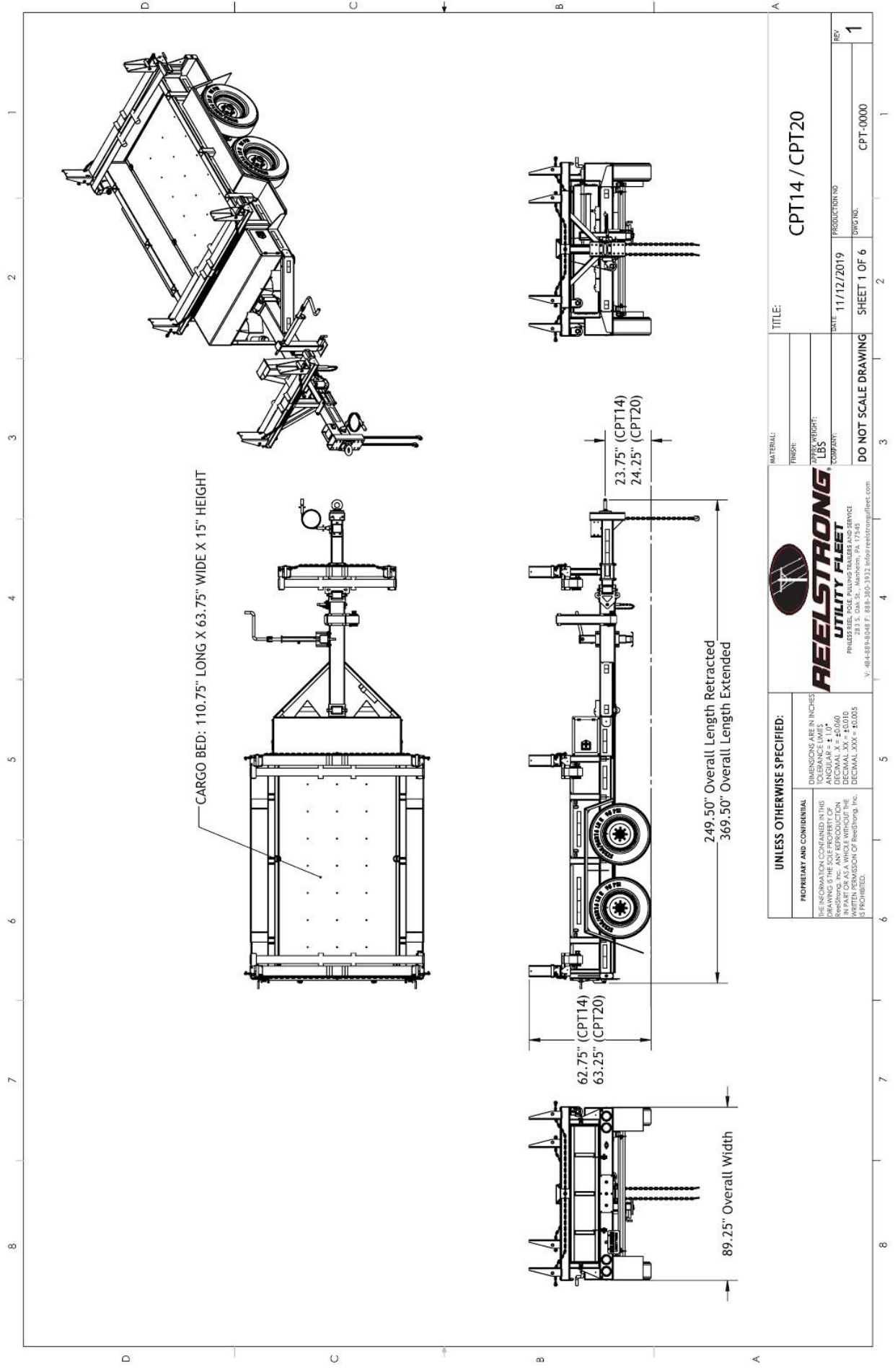
- 16" Bronze Alloy TRU-STOP Ventilated Reel Brake
- 3,300 ft/lbs Torque Hydraulic Take-up Retriever. (Motor Spooled w/ Reel Brake ILO Cross-Over Relief Valve for Smooth Instant Reel Stoppage)
- 2-7/16" Universal Adapter for Capstan and Power Reel Attachments
- 7 Inch General Purpose Capstan
- Collapsible Power Reel
- Slip-Clutch Fiber-Optic Pulling Capstan
- Lever Lock Stanchions
- Wiring Connections Soldered and Sealed w/ Heat Shrink Tubing
- Plug-and-Play Sealco Wiring Harness
- Wheel Chocks: Rubber or All Weather Galvanized Grip Strut
- Spare Tire and Mount
- Extension Intervals to Customer Spec
- Solar Charged Breakaway Kit
- Full Side-Opening Toolbox Package
- Full Top-Opening Toolbox Package
- Quick-Rotate Swivel Jack
- 16" Long 6-Bolt Hitch Extension (w/ 52" Safety Chains and Breakaway Cable Extension)
- 3" Lunette Eye
- All Stainless Steel Fasteners (1/2" and under)

OPTIONS (cont.)

- Anti-Skid/Anti-Glare Sand Paint on all Walking Surfaces
- Various Trailer Light Plugs (Customer Choice)
- Truck-Lite Lighting
- Lug Nut Indicators
- Lateral Turret Option (Size Customizable)

OPTIONAL LIGHT BAR

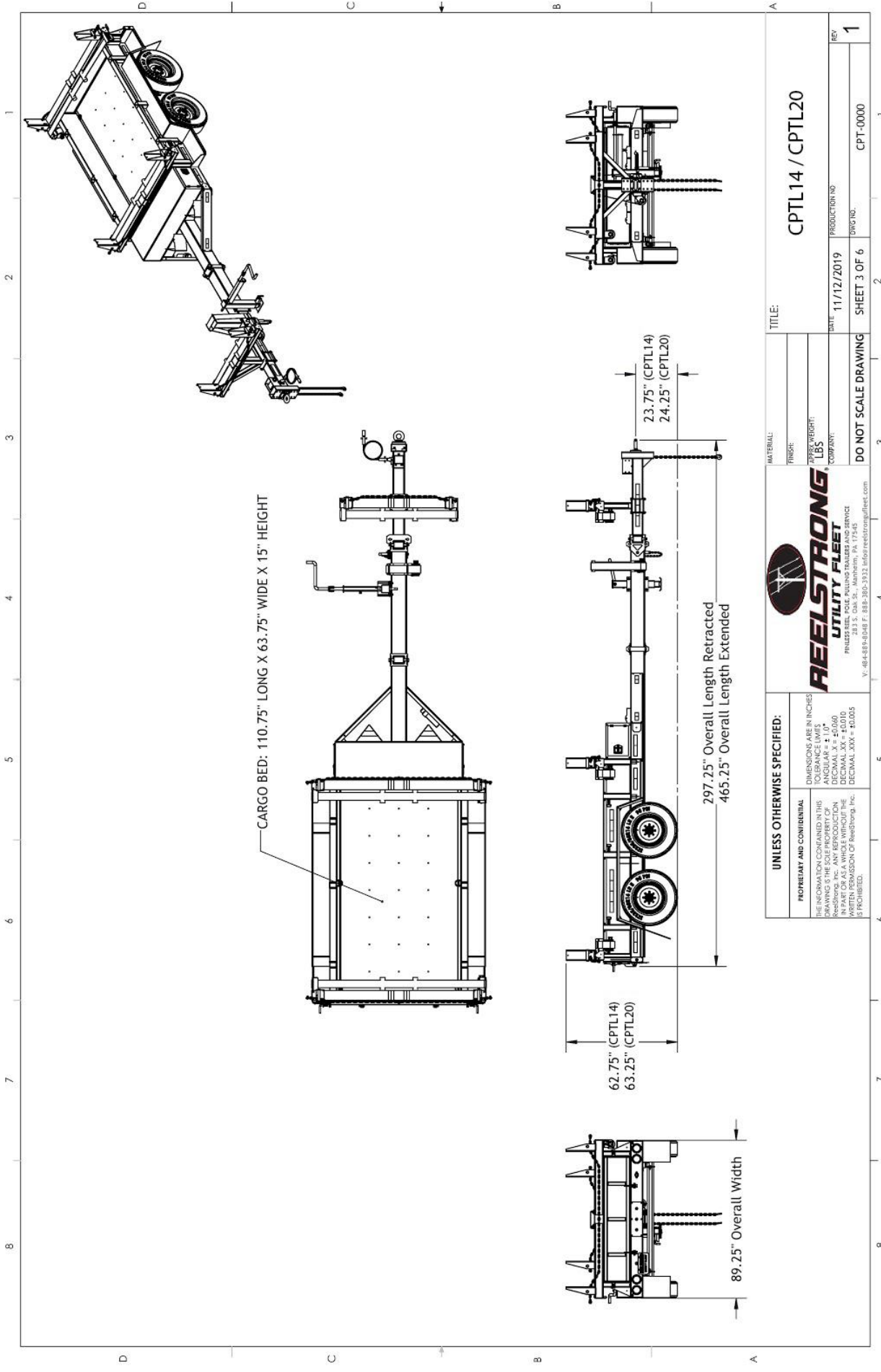
- All TIG Welded Aluminum w/ Claw-Tooth for Superior Grip
- Contains (4) Four 4" Stop/Turn / Tail Rubber Mounted Sealed Beam LED Lights
- (3) Three Center ID Marker Lights
- (2) Two Side Marker Lights
- 7-Way REMOVABLE, DOUBLE ENDED NON-HARD WIRED Light Plug (to prevent yank-out damage and for easy maintenance) (7-Way ILO 4-Way is easier to source and more readily available for you)
- 35' Standard Electric Cable Length with a 7-Way Connector Plug



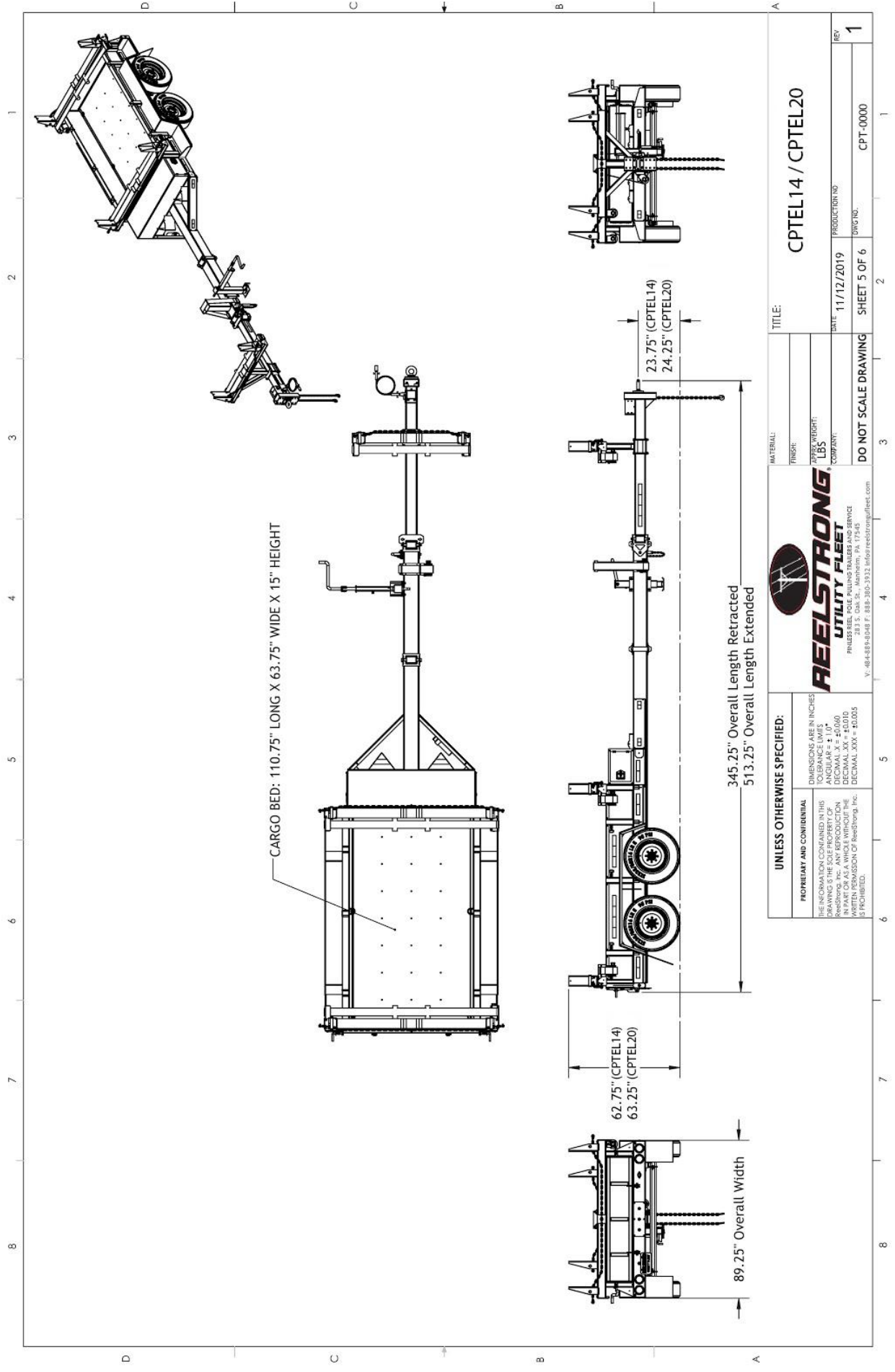
CARGO BED: 110.75" LONG X 63.75" WIDE X 15" HEIGHT

UNLESS OTHERWISE SPECIFIED: DIMENSIONS ARE IN INCHES TOLERANCE LIMITS ANGULAR ± 1.0° DECIMAL X = ±0.006 FRACTIONAL X = ±0.005 DECIMAL XXX = ±0.005 IS PROHIBITED.		REELSTRONG UTILITY FLEET <small>PRIME STEEL POLE PULLING TRAILERS AND SERVICE</small> <small>1700 W. PA. 17145</small> <small>Y. 48-4-884-8048 F. 888-380-3333 info@reelstrongfleet.com</small>		TITLE: CPT14 / CPT20	
PROPRIETARY AND CONFIDENTIAL <small>THE INFORMATION CONTAINED IN THIS DRAWING IS THE SOLE PROPERTY OF REELSTRONG, INC. ANY REPRODUCTION WITHOUT THE WRITTEN PERMISSION OF REELSTRONG, INC. IS PROHIBITED.</small>		MATERIAL: _____ FINISH: _____ PART WEIGHT: _____ LBS COMPANY: _____		DATE: 11/12/2019 PRODUCTION NO: _____ SHEET 1 OF 6 DRAWING: CPT-0000	
				REV: 1	

DO NOT SCALE DRAWING



UNLESS OTHERWISE SPECIFIED: DIMENSIONS ARE IN INCHES TOLERANCE LIMITS ANGULAR ± 1.0° DECIMAL X = ±0.006 MILLIMETER ± 0.15 WRITTEN PERMISSION OF ReelStrong, Inc. IS PROHIBITED.		REELSTRONG UTILITY FLEET <small>PRIME STEEL POLE PULLING TRAILERS AND SERVICE</small> <small>1700 W. STATE ST. PA. 15116</small> <small>P.O. BOX 10000, WILKES BARRE, PA. 18201</small> <small>TEL: 800-888-8888</small>		TITLE: CPTL14 / CPTL20
MATERIAL: _____ FINISH: _____ WEIGHT: _____ LBS: _____ COMPANY: _____		DATE: 11/12/2019 PRODUCTION NO: _____ DRAWING NO: CPT-0000	REV: 1	
DO NOT SCALE DRAWING		SHEET 3 OF 6	1	



UNLESS OTHERWISE SPECIFIED: DIMENSIONS ARE IN INCHES TOLERANCE LIMITS ANGULAR ± 1.0° DECIMAL X = ±0.006 MILLIMETER ± 0.15 WRITTEN PERMISSION OF ReelStrong, Inc. IS PROHIBITED.		REELSTRONG UTILITY FLEET <small>PRIMER STEEL, POLE, PULLING TRAILERS AND SERVICE</small> <small>1000 W. STATE ST. PH. 1-415-889-3903 FAX 1-415-889-3903 info@reelstrongfleet.com</small>		TITLE: CPTTEL14 / CPTTEL20	
MATERIAL: FINISH: PIPE WEIGHT: LBS: COMPANY:		DATE: 11/12/2019 PRODUCTION NO:		REV: 1	
DO NOT SCALE DRAWING		SHEET 5 OF 6		CPT-0000	